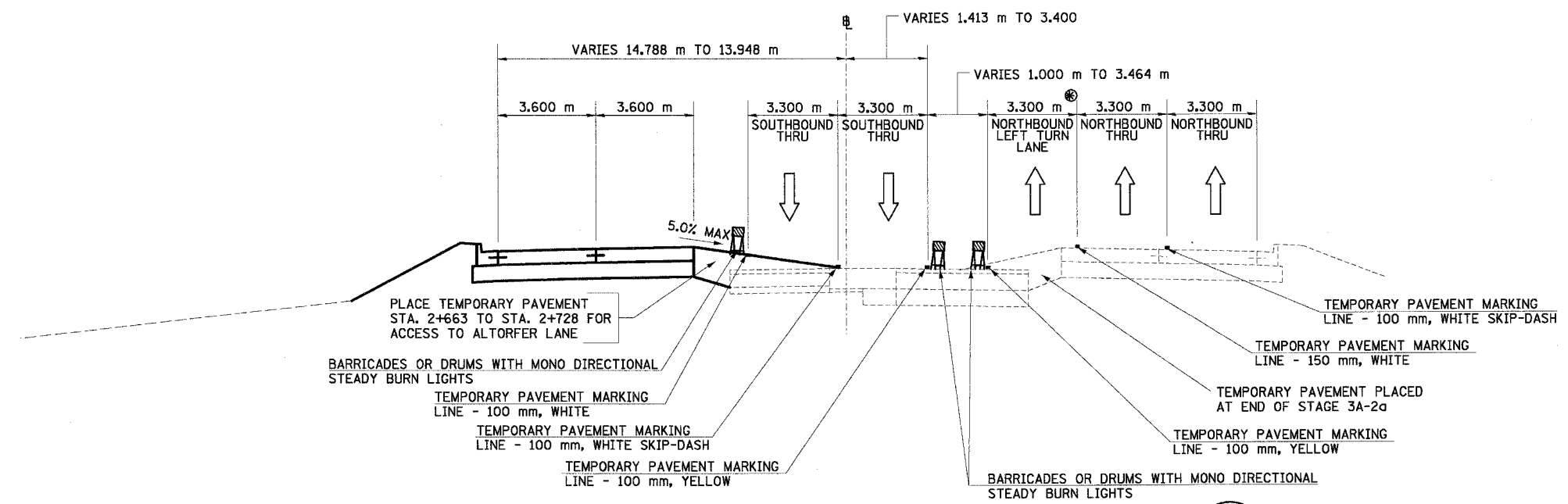


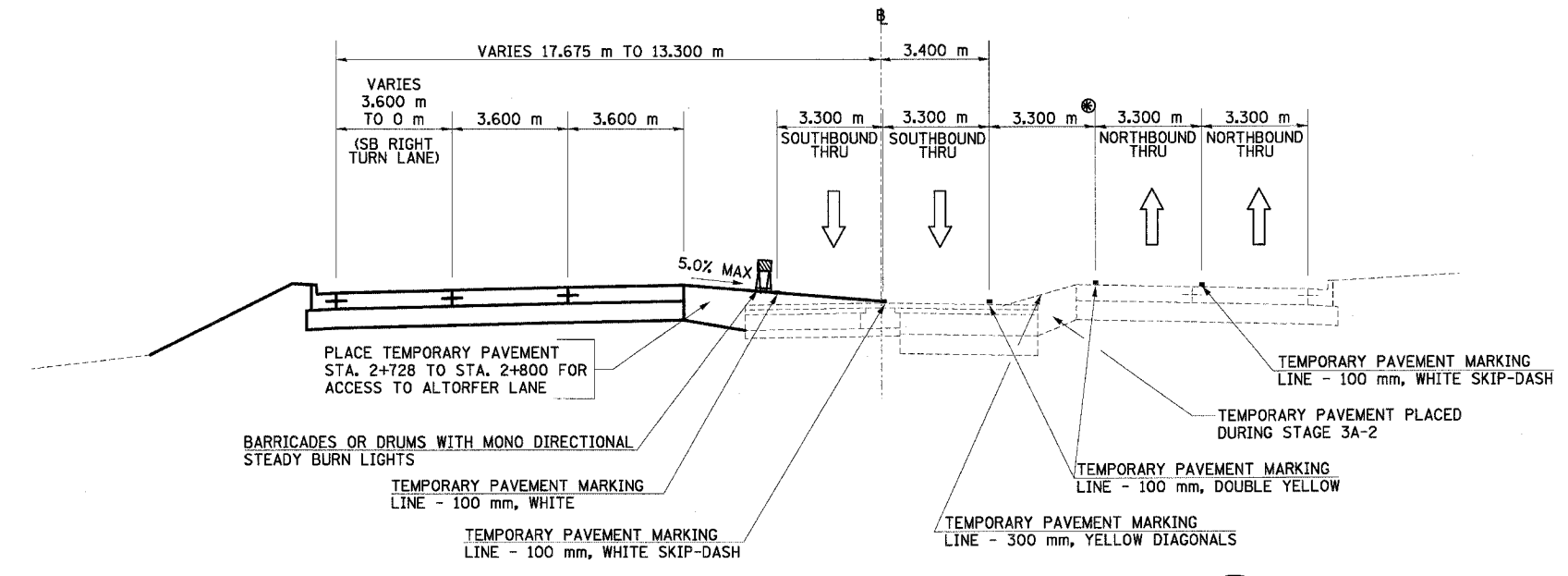
F.A.I. RTE.	SECTION	COUNTY	TOTAL SHEETS	SHEET NO.
74	*	TAZEWELL	1366	168
STA.	TO STA.			
FED. ROAD DIST. NO.	ILLINOIS FED. AID PROJECT			

68201  
 \*(90-1)R-2:90(13,14,14-1)R-1



**NORTH MAIN ST MOT TYPICAL SECTION NO. 7B**  
 STA. 2+643.696 TO STA. 2+728.020

7B



**NORTH MAIN ST MOT TYPICAL SECTION NO. 8B**  
 STA. 2+728.020 TO STA. 2+800.000

8B

NOTES:  
 \* THIS 3.300 m BREAKOVER AREA SHALL NOT EXCEED AN 5% GRADE.

REVISIONS	
NAME	DATE

ILLINOIS DEPARTMENT OF TRANSPORTATION  
 FAI ROUTE 74 (I-74)  
 MAINTENANCE OF TRAFFIC  
 STAGE 3A-3  
 ILL. 116-U.S. 150-NORTH MAIN ST.  
 TYPICAL SECTIONS 7B & 8B  
 DATE 12/20/2004  
 DRAWN BY MRF  
 CHECKED BY RTG

