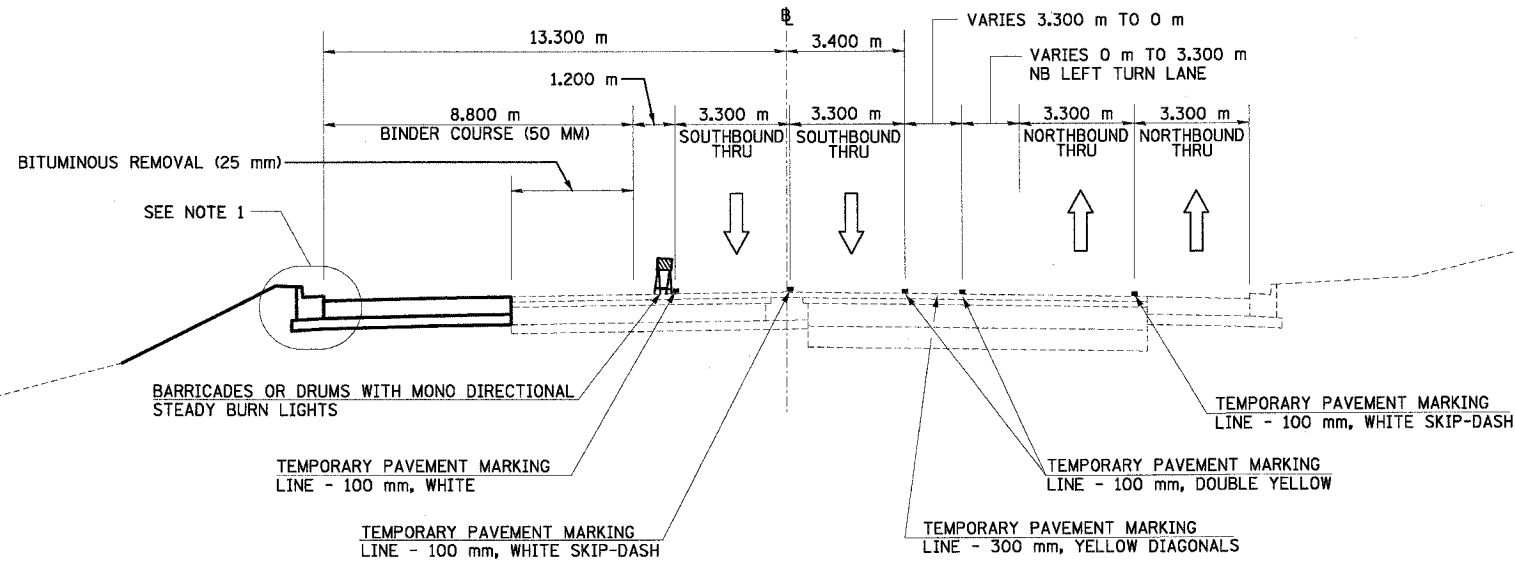


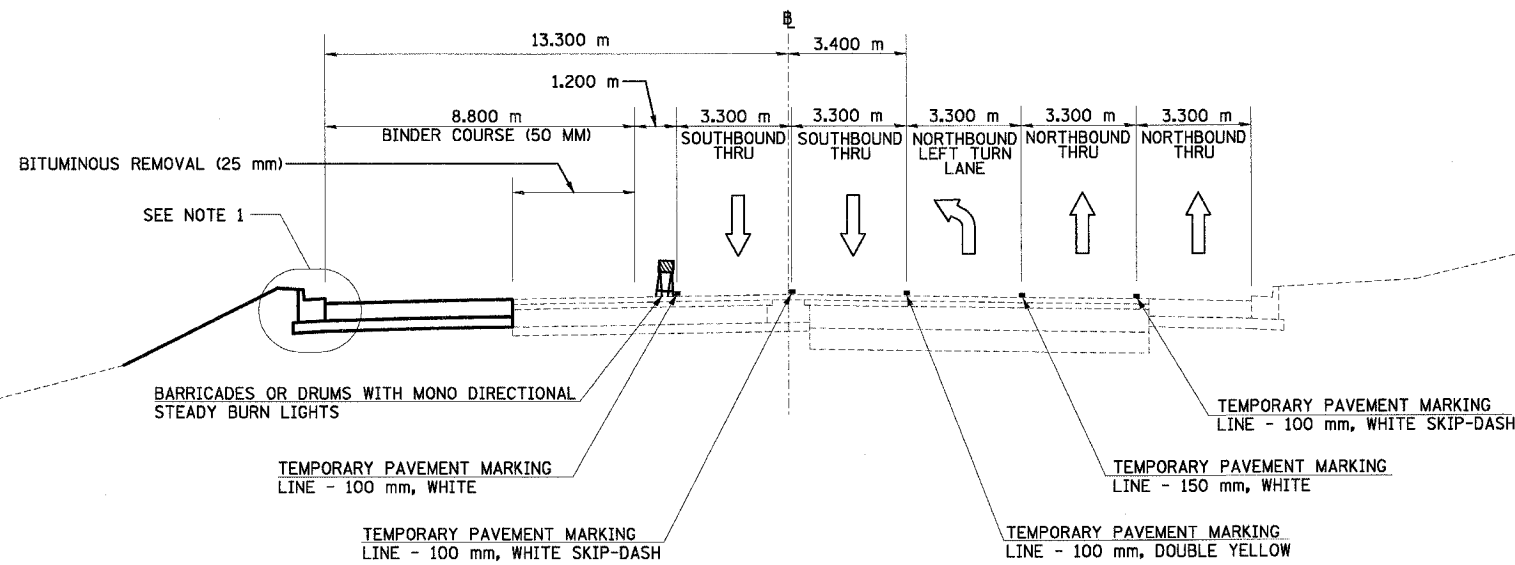
F.A. RTE.	SECTION	COUNTY	TOTAL SHEETS	SHEET NO.
74	*	TAZEWELL	1366	169
STA.		TO STA.		
FED. ROAD DIST. NO.		ILLINOIS FED. AID PROJECT		

\*(90-11)R-2;90(13,14,14-1)R-1



**NORTH MAIN ST MOT TYPICAL SECTION NO. 9B**  
STA. 2+800.000 TO STA. 2+858.678

9B



**NORTH MAIN ST MOT TYPICAL SECTION NO. 10B**  
STA. 2+858.678 TO STA. 2+907.212

10B

- NOTES: 1. USE DISTRICT 4 STANDARD 602401-D4, TEMPORARY INLET DRAINAGE TREATMENT  
2. BINDER COURSE IS TO BE PLACED IN WORKZONE AREAS AS SHOWN

REVISIONS		ILLINOIS DEPARTMENT OF TRANSPORTATION FAI ROUTE 74 (I-74) MAINTENANCE OF TRAFFIC STAGE 3A-3 ILL. 116-U.S. 150-NORTH MAIN ST. TYPICAL SECTIONS 9B & 10B
NAME	DATE	
		URS URS CORPORATION CHICAGO, ILLINOIS DATE 12/20/2004 DRAWN BY MRF CHECKED BY RTG

