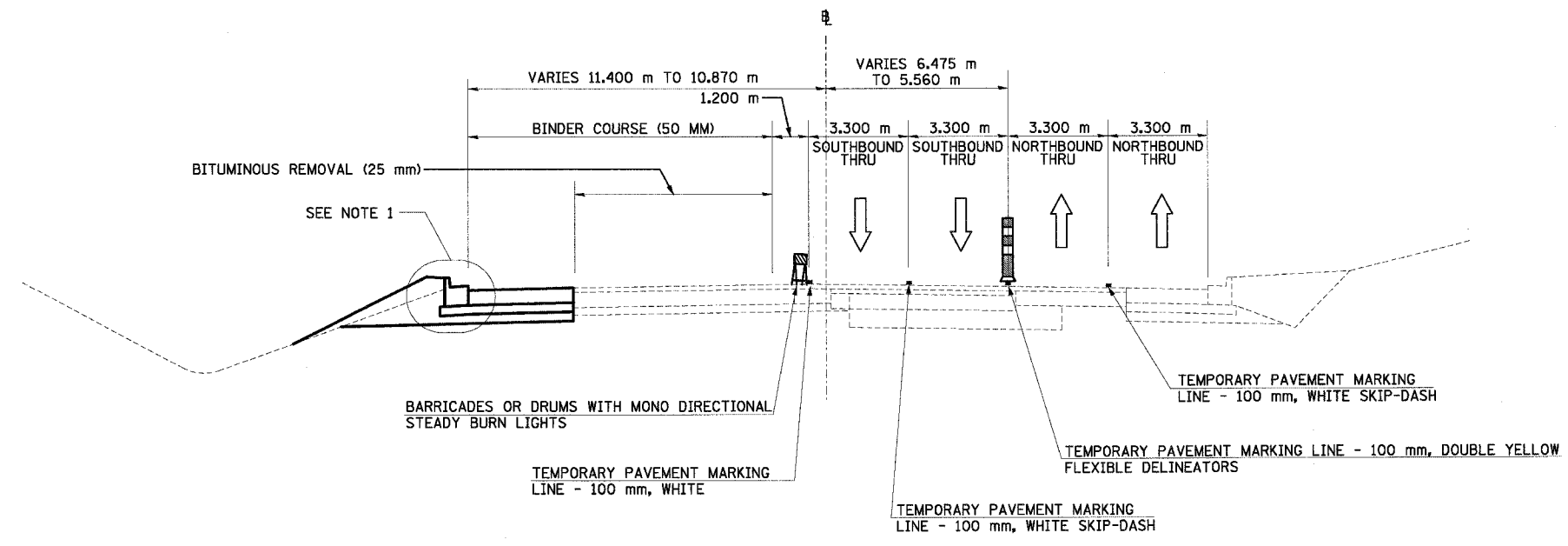


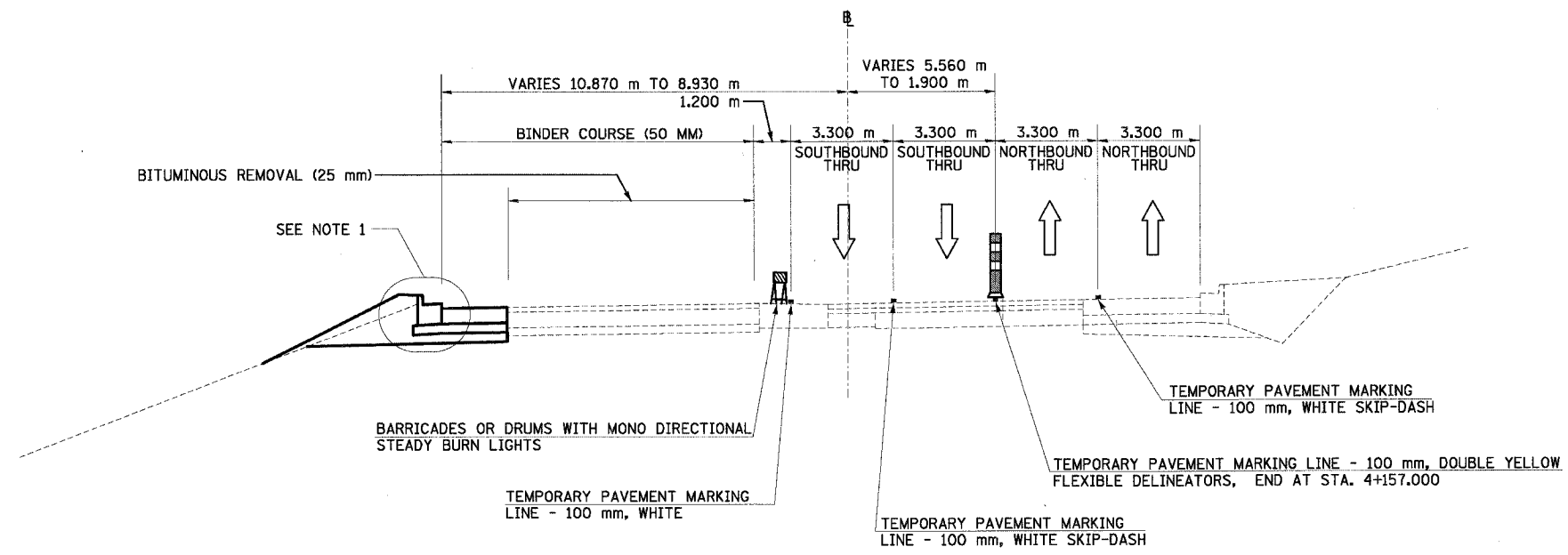
F.A.I. RTE.	SECTION	COUNTY	TOTAL SHEETS	SHEET NO.
74	*	TAZEWELL	1366	175
STA.		TO STA.		
FED. ROAD DIST. NO.		ILLINOIS FED. AID PROJECT		

88201
 *(90-11)R-2;90(13,14,14-1)R-1



NORTH MAIN ST MOT TYPICAL SECTION NO. 21B
 STA. 3+961.500 TO STA. 4+013.000

21B



NORTH MAIN ST MOT TYPICAL SECTION NO. 22B
 STA. 4+013.000 TO STA. 4+157.000

* MAINTENANCE OF TRAFFIC
 ENDS AT STA 4+237.919

22B

- NOTES: 1. USE DISTRICT 4 STANDARD 602401-D4, TEMPORARY INLET DRAINAGE TREATMENT
 2. BINDER COURSE IS TO BE PLACED IN WORKZONE AREAS AS SHOWN

REVISIONS	
NAME	DATE

ILLINOIS DEPARTMENT OF TRANSPORTATION
 FAI ROUTE 74 (I-74)
 MAINTENANCE OF TRAFFIC
 STAGE 3A-3
 ILL. 116-U.S. 150-NORTH MAIN ST.
 TYPICAL SECTIONS 21B & 22B
 DATE 12/20/2004
 DRAWN BY MRF
 CHECKED BY RTG

