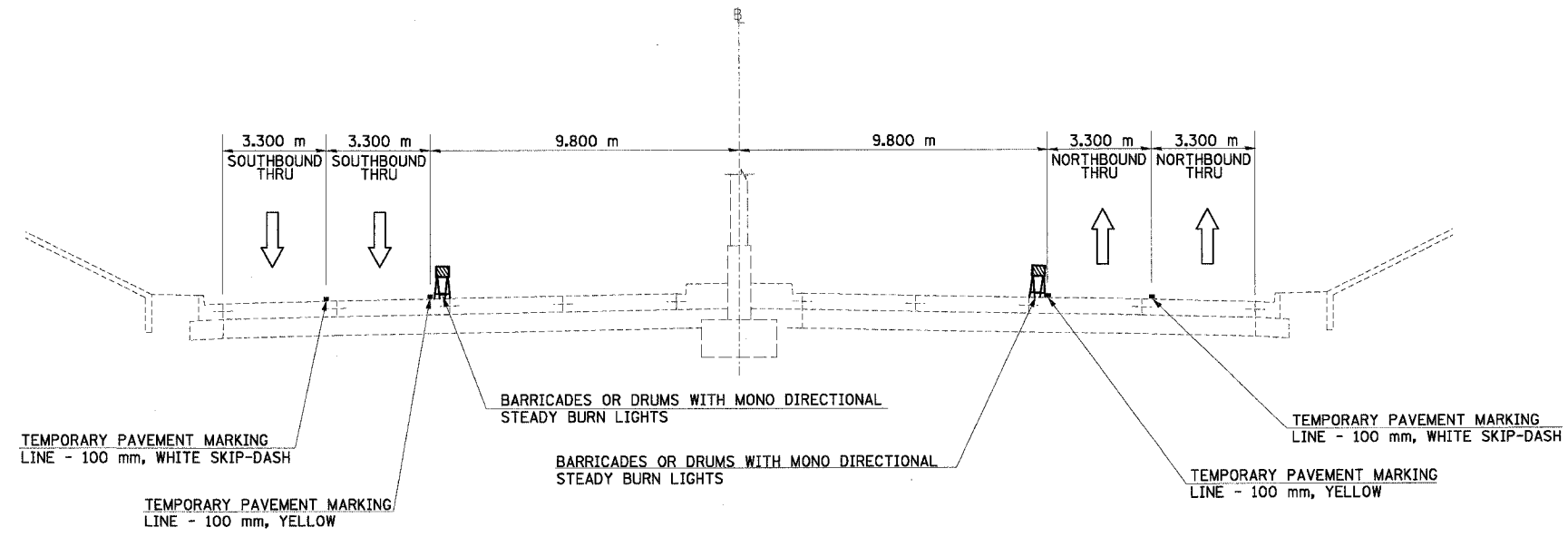
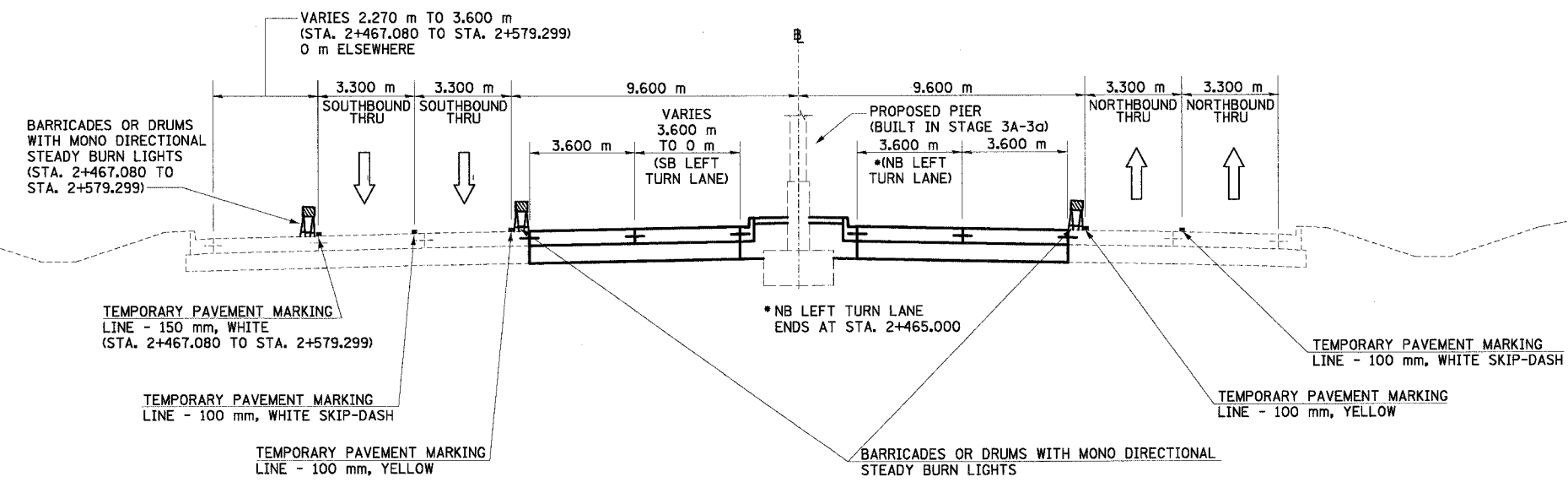


68201				
F.A.I. RTE.	SECTION	COUNTY	TOTAL SHEETS	SHEET NO.
74	*	TAZEWELL	1366	187
STA.		TO STA.		
FED. ROAD DIST. NO.		ILLINOIS FED. AID PROJECT		

*(90-11)R-2;90(13,14,14-1)R-1



NORTH MAIN ST MOT TYPICAL SECTION NO. 7C
 STA. 2+402.933 TO STA. 2+412.933
 (CONSTRUCTION OMISSION STA. 2+310.000 TO STA. 2+412.933)



NORTH MAIN ST MOT TYPICAL SECTION NO. 8C
 STA. 2+412.933 TO STA. 2+579.299

REVISIONS	
NAME	DATE

ILLINOIS DEPARTMENT OF TRANSPORTATION
 FAI ROUTE 74 (I-74)
 MAINTENANCE OF TRAFFIC
 STAGE 3A-4
 ILL. 116-U.S. 150-NORTH MAIN ST.
 TYPICAL SECTIONS 7C & 8C
 DATE 12/20/2004
 DRAWN BY MRF
 CHECKED BY RTG

