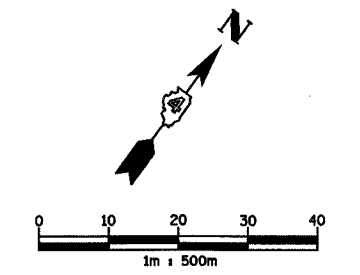
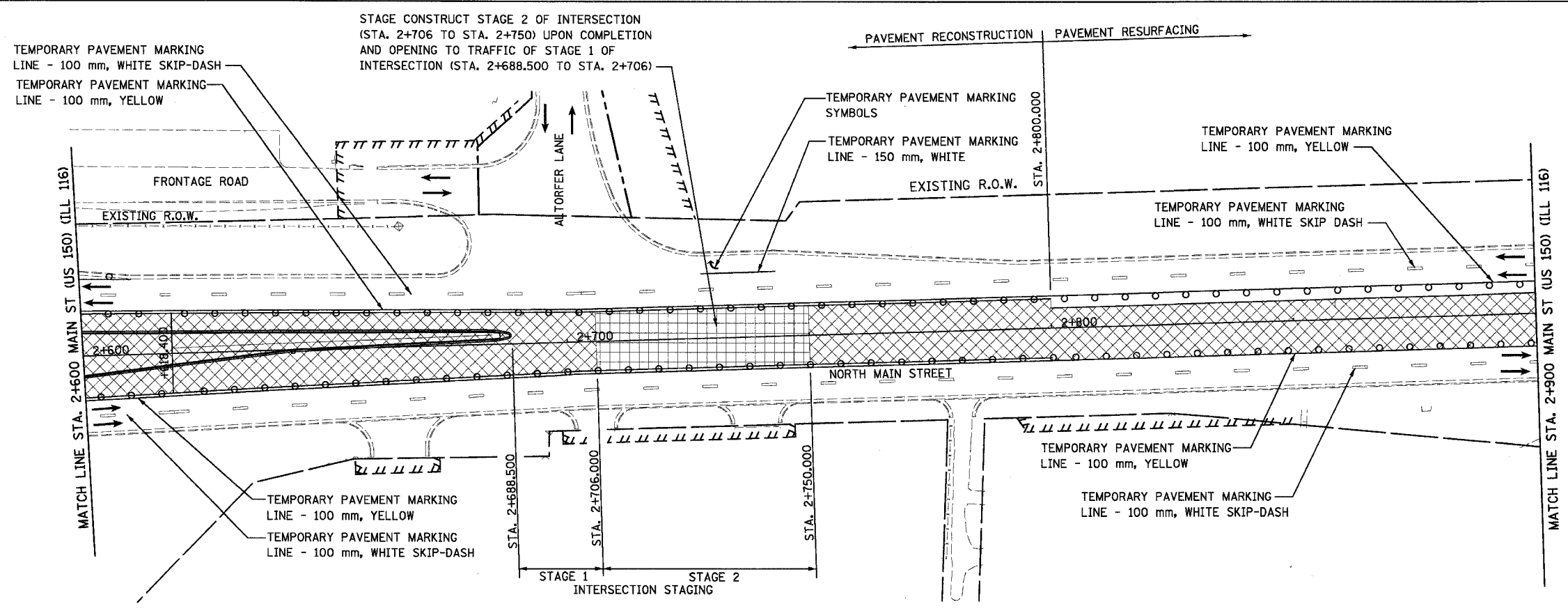
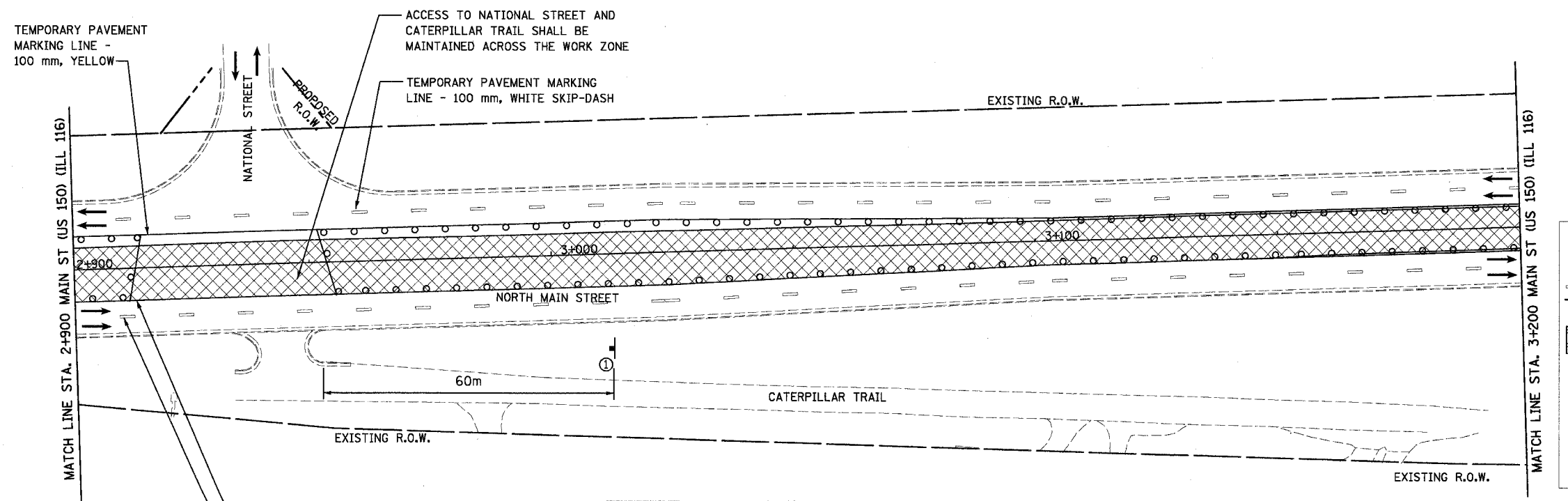


F.A.I. RTE.	SECTION	COUNTY	TOTAL SHEETS NO.
74	(90-11)R-2; 90(13,14,14-1)R-1	TAZEWELL	1364 196
STA. 2+600 TO STA. 3+200		FED. ROAD DIST. NO. 4 ILLINOIS FED. AID PROJECT	



- NOTES:
1. THE NORTH MAIN STREET/ALTORFER LANE INTERSECTION SHALL REMAIN OPEN AND ACCESSIBLE AT ALL TIMES. ADJUST TRAFFIC CONTROL ITEMS AS INTERSECTION STAGING WARRANTS.
  2. TRUCKS ENTERING AND EXITING AT ALTORFER LANE WILL NOT BE ABLE TO DO SO CONCURRENTLY, AS THE INBOUND AND OUTBOUND PATHS OVERLAP.



**LEGEND**

- TEMPORARY PAVEMENT MARKING
- WORK ZONE
- TRAFFIC FLOW DIRECTION
- SIGN, SEE GENERAL NOTES AND LEGEND SHEET FOR SIGN TYPE
- DRUM WITH STEADY BURNING MONO-DIRECTIONAL LIGHT

THIS MAINTENANCE OF TRAFFIC PLAN SHOWS SPECIAL TRAFFIC CONTROL IN THIS AREA. IN ADDITION TO THE SPECIAL TRAFFIC CONTROL DETAILS SHOWN, IDOT TRAFFIC CONTROL HIGHWAY STANDARDS SHALL APPLY WHERE APPLICABLE AND AS DIRECTED BY THE ENGINEER. SEE TRAFFIC NOTES ON THE CONSTRUCTION SEQUENCING SHEET FOR STAGE 3A-4 FOR APPLICABLE IDOT HIGHWAY STANDARDS.

REVISIONS	
NAME	DATE



ILLINOIS DEPARTMENT OF TRANSPORTATION  
 F.A.I. ROUTE 74 (I-74)  
 MAINTENANCE OF TRAFFIC  
 STAGE 3A-4  
 NORTH MAIN STREET 2+600 TO 3+200  
 DRAWN BY KMO  
 DATE 12/20/2004 CHECKED BY RTG