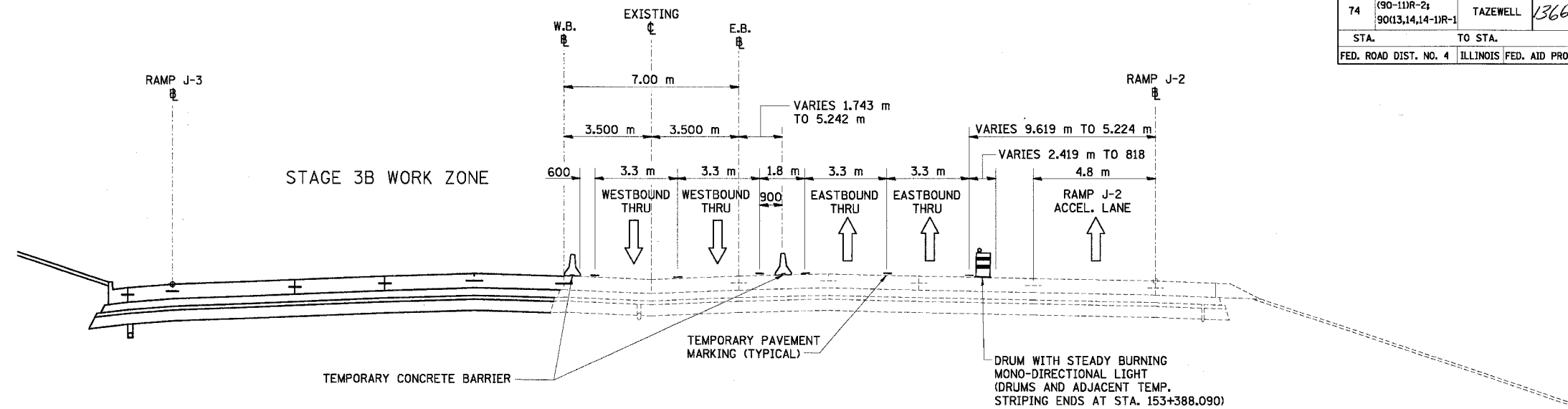
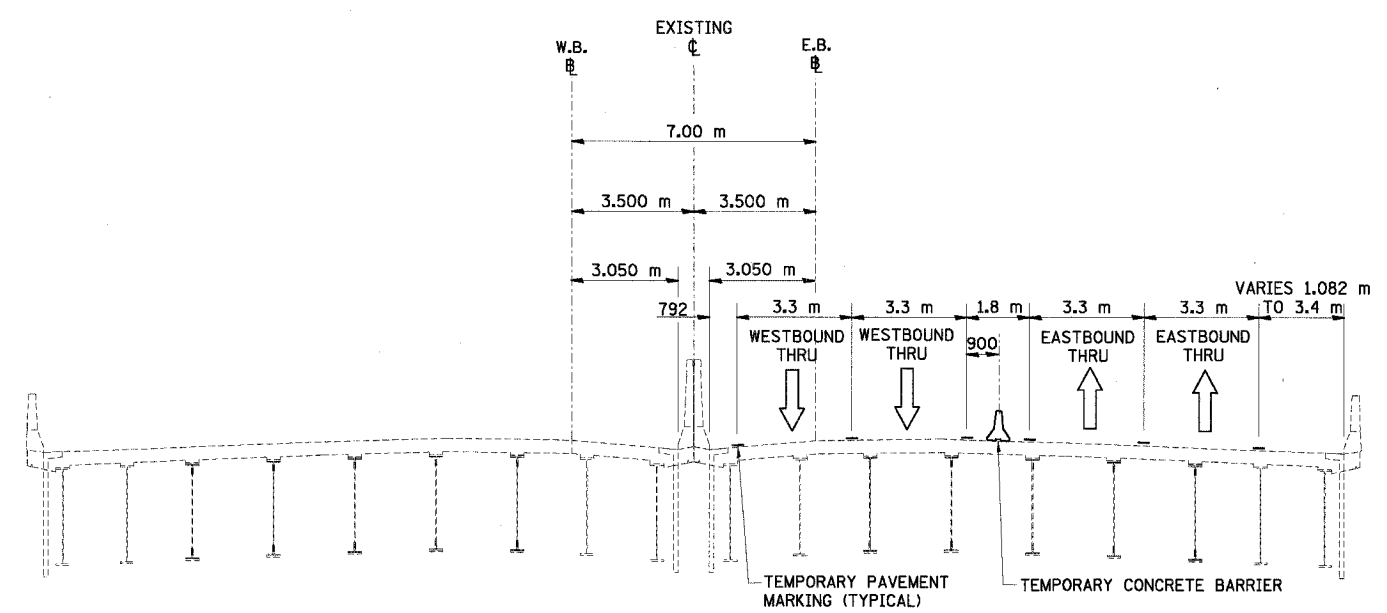


F.A.I. RTE.	SECTION	COUNTY	TOTAL SHEETS	SHEET NO.
74	(90-11R-2) 90(13,14,14-1)R-1	TAZEWELL	1366	205
STA.		TO STA.		
FED. ROAD DIST. NO. 4		ILLINOIS FED. AID PROJECT		



I-74 MOT TYPICAL SECTION NO. 13
STA. 153+356.574 TO STA. 153+479.130

13



I-74 MOT TYPICAL SECTION NO. 14
STA. 153+479.130 TO STA. 153+750.460

14

I-74 OVER CAMP ST (US 150), FARM CREEK AND TP&W R.R.

REVISIONS		ILLINOIS DEPARTMENT OF TRANSPORTATION F.A.I. ROUTE 74 (I-74) MAINTENANCE OF TRAFFIC STAGE 3B I-74 TYPICAL SECTIONS 13 & 14 DRAWN BY KMO CHECKED BY RTG
NAME	DATE	

