

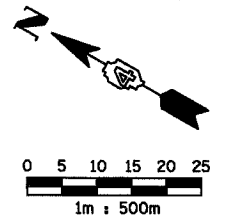
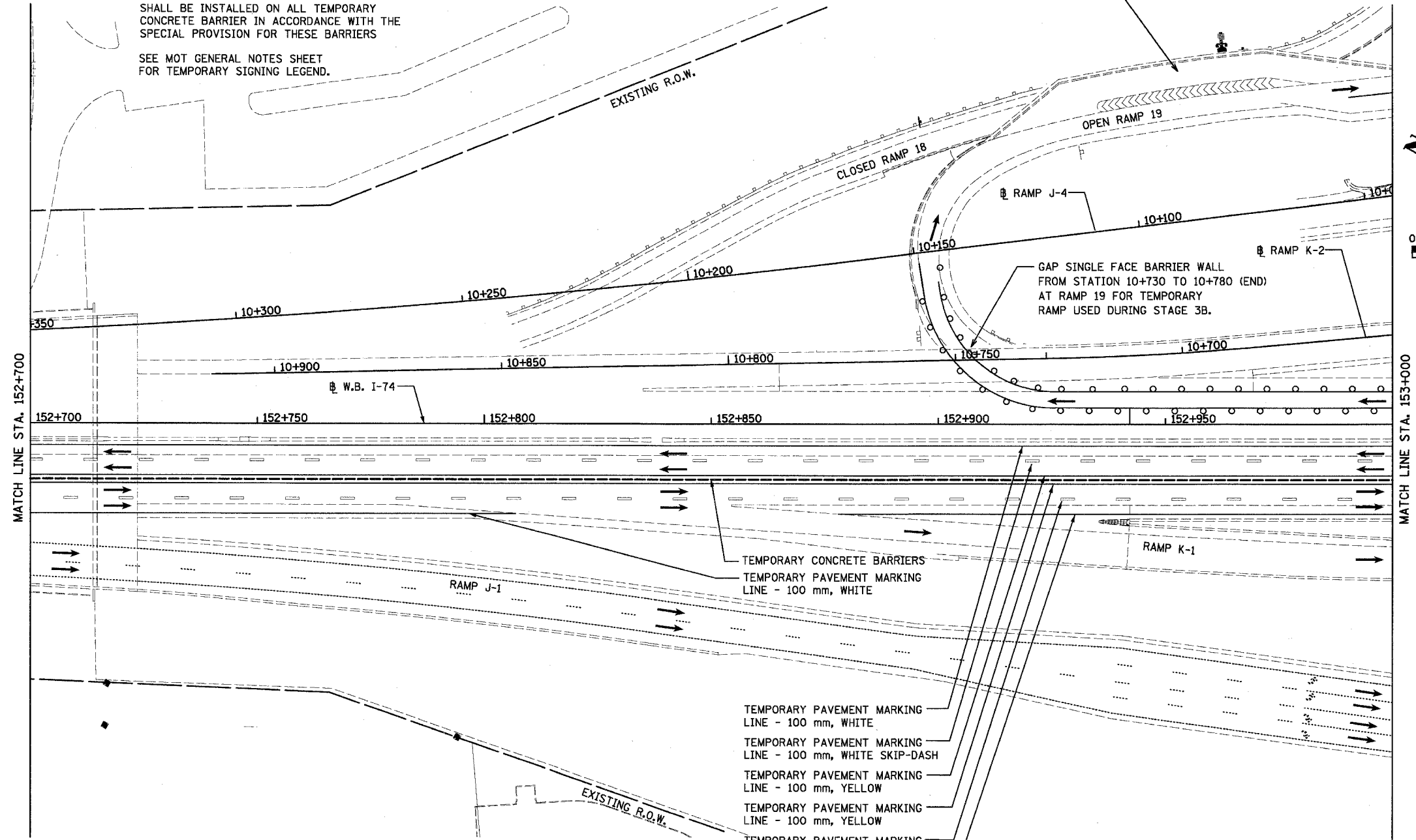
| F.A.I. RTE. | SECTION | COUNTY | TOTAL SHEETS | SHEET NO. |
|-----------------------|--------------------------------|---------------------------|--------------|-----------|
| 74 | (90-11R-2; 90(13,14,14-1R-1 | TAZEWELL | 1366 | 206 |
| STA. 152+700 | | TO STA. 153+000 | | |
| FED. ROAD DIST. NO. 4 | | ILLINOIS FED. AID PROJECT | | |

NOTES: MAINLINE TRAFFIC CONTROL FOR I-74 SHALL BE IN ACCORDANCE WITH STANDARD 701101 AND 701406.

SEE TEMPORARY TRAFFIC CONTROL SCHEDULE TO VERIFY LOCATION OF TEMPORARY CONCRETE BARRIERS. BARRIER WALL REFLECTORS SHALL BE INSTALLED ON ALL TEMPORARY CONCRETE BARRIER IN ACCORDANCE WITH THE SPECIAL PROVISION FOR THESE BARRIERS

SEE MOT GENERAL NOTES SHEET FOR TEMPORARY SIGNING LEGEND.

CRASH INVESTIGATION SITE (CIS-174-09B)



MATCH LINE STA. 152+700

MATCH LINE STA. 153+000

LEGEND

| | |
|--|----------------------------|
| | TEMPORARY PAVEMENT MARKING |
| | WORK ZONE |
| | TRAFFIC FLOW DIRECTION |
| | TEMPORARY CONCRETE BARRIER |

- TEMPORARY PAVEMENT MARKING LINE - 100 mm, WHITE
- TEMPORARY PAVEMENT MARKING LINE - 100 mm, WHITE SKIP-DASH
- TEMPORARY PAVEMENT MARKING LINE - 100 mm, YELLOW
- TEMPORARY PAVEMENT MARKING LINE - 100 mm, YELLOW
- TEMPORARY PAVEMENT MARKING LINE - 100 mm, WHITE SKIP-DASH
- TEMPORARY PAVEMENT MARKING LINE - 100 mm, WHITE

THIS MAINTENANCE OF TRAFFIC PLAN SHOWS SPECIAL TRAFFIC CONTROL IN THIS AREA. IN ADDITION TO THE SPECIAL TRAFFIC CONTROL DETAILS SHOWN, IDOT TRAFFIC CONTROL HIGHWAY STANDARDS SHALL APPLY WHERE APPLICABLE AND AS DIRECTED BY THE ENGINEER. SEE TRAFFIC NOTES ON THE CONSTRUCTION SEQUENCING SHEET FOR STAGE 3B FOR APPLICABLE IDOT HIGHWAY STANDARDS.



| REVISIONS | |
|-----------|------|
| NAME | DATE |
| | |
| | |
| | |
| | |
| | |
| | |

ILLINOIS DEPARTMENT OF TRANSPORTATION
 F.A.I. ROUTE 74 (I-74)
 MAINTENANCE OF TRAFFIC
 STAGE 3B
 STA. 152+700 TO STA. 153+000 I-74
 DRAWN BY KMO
 CHECKED BY RTG
 DATE 07/21/04