

STAGE 3C
CONSTRUCTION: (CONSTRUCTION ENDS NOVEMBER 2006)

- ① CONSTRUCT MEDIAN BARRIER FROM STATION 152+272 TO 152+419 AND FROM STATION 153+089 TO STATION 153+470
- ② CONSTRUCT RAMP J4
- ③ PLACE PERMANENT STRIPING ON I-74
- ④ CONTINUE WORK ON RAMP K-2
- ⑤ PROPOSED IMPROVEMENTS ASSOCIATED WITH RAMP 19 AND 21 THAT WERE NOT PREVIOUSLY COMPLETED DUE TO TRAFFIC OPERATIONS SHALL BE FINISHED DURING STAGE 3C

TRAFFIC:

- 1. SHIFT WB I-74 TRAFFIC ONTO THE NEWLY CONSTRUCTED WB LANES
- 2. MAINTAIN TWO LANES OF TRAFFIC IN EACH DIRECTION ON I-74 DURING PEAK HOURS
- 3. FOR CONSTRUCTION OF MEDIAN CONCRETE BARRIER, USE STANDARD 701421.
- 4. RAMP J-4 & K-2 CLOSED IN ACCORDANCE WITH I-74 PROJECT STANDARD 701411-I-74.
- 5. LANE CLOSURES FOR MAINLINE AND RAMPS SHALL BE FOR DAY OPERATIONS ONLY AND SHALL BE IN ACCORDANCE WITH STANDARDS 701406 AND 701411.

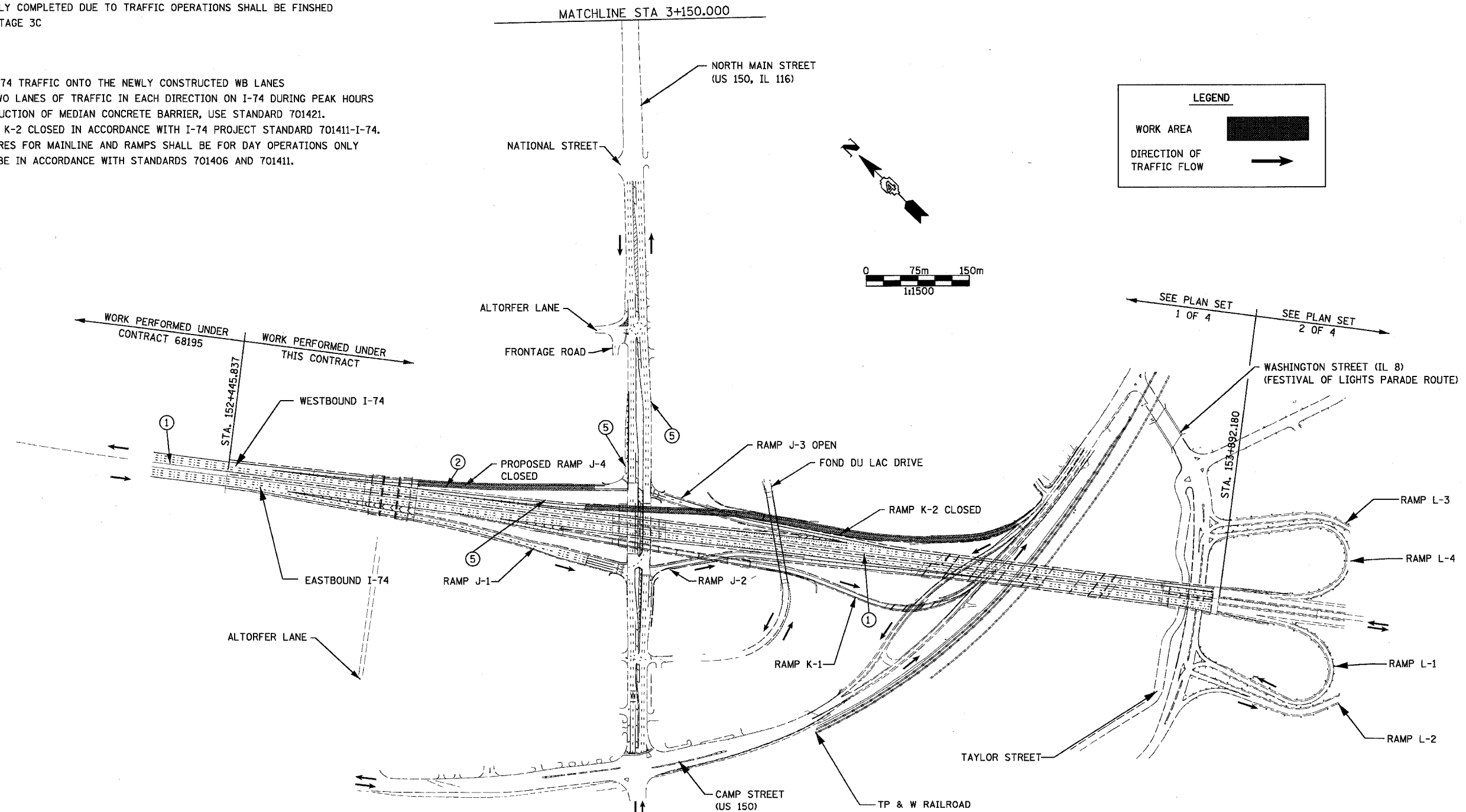
GENERAL NOTES:

SEE SIGNING PLAN FOR STAGED REMOVAL OF EXISTING SIGNS AND STAGED PLACEMENT OF PROPOSED INFORMATION AND GUIDE SIGNS.

THE STAGED CONSTRUCTION SHOWN HERE IS A GENERAL SEQUENCING SUGGESTION.

SEE PLAN SET 2 OF 4 FOR MAINTENANCE OF TRAFFIC FOR WASHINGTON STREET, RAMP L-3, AND L-4.

F.A.I. RTE.	SECTION	COUNTY	TOTAL SHEETS	SHEET NO.
74	90-11R-2; 90(13,14,14-1)R-1	TAZEWELL	1366	209
STA. 152+445.837 TO STA. 153+892.180				
FED. ROAD DIST. NO. 4			ILLINOIS FED. AID PROJECT	



LEGEND

WORK AREA

DIRECTION OF TRAFFIC FLOW

REVISIONS	
NAME	DATE

ILLINOIS DEPARTMENT OF TRANSPORTATION
 F.A.I. ROUTE 74 (I-74)
CONSTRUCTION SEQUENCING
 STAGE 3C

DATE 12/20/2004

DRAWN BY KMO
 CHECKED BY RTC

