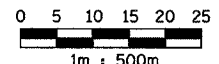
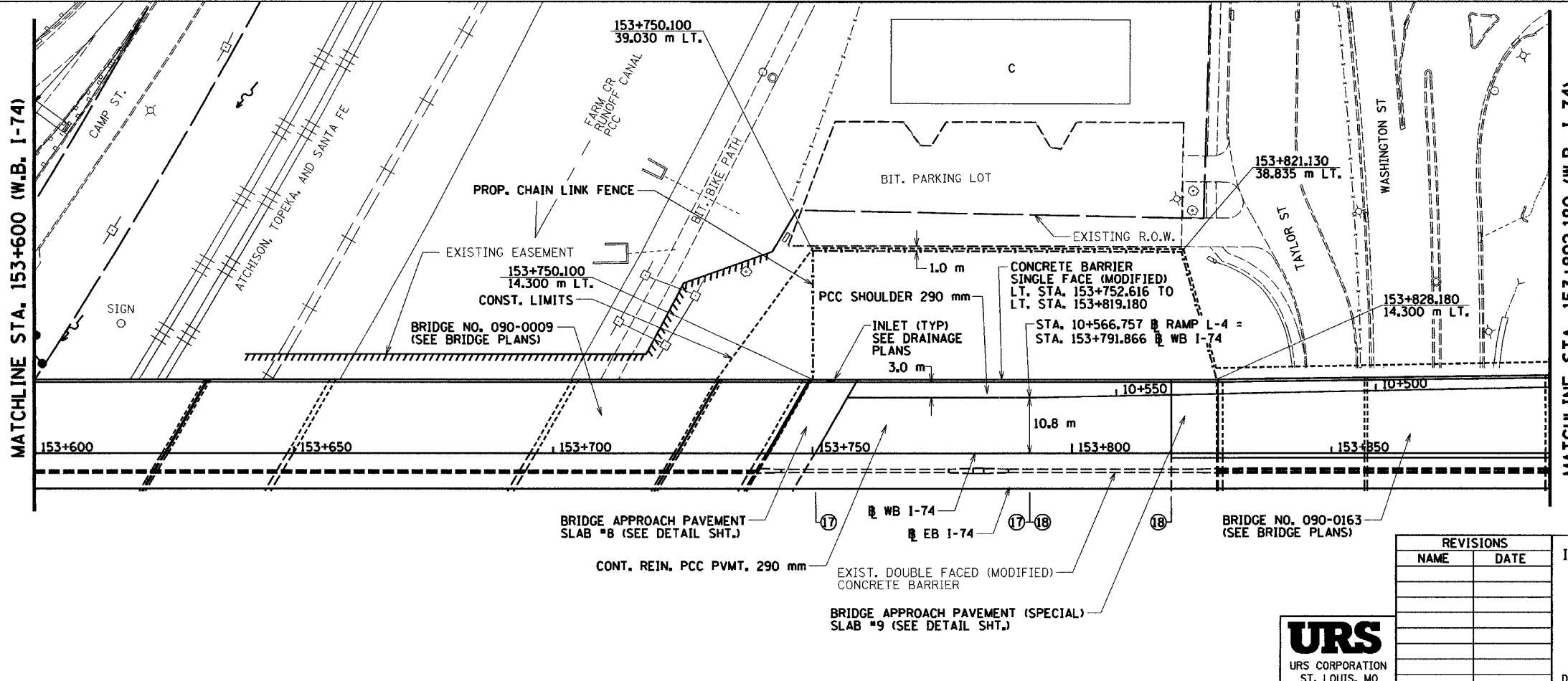
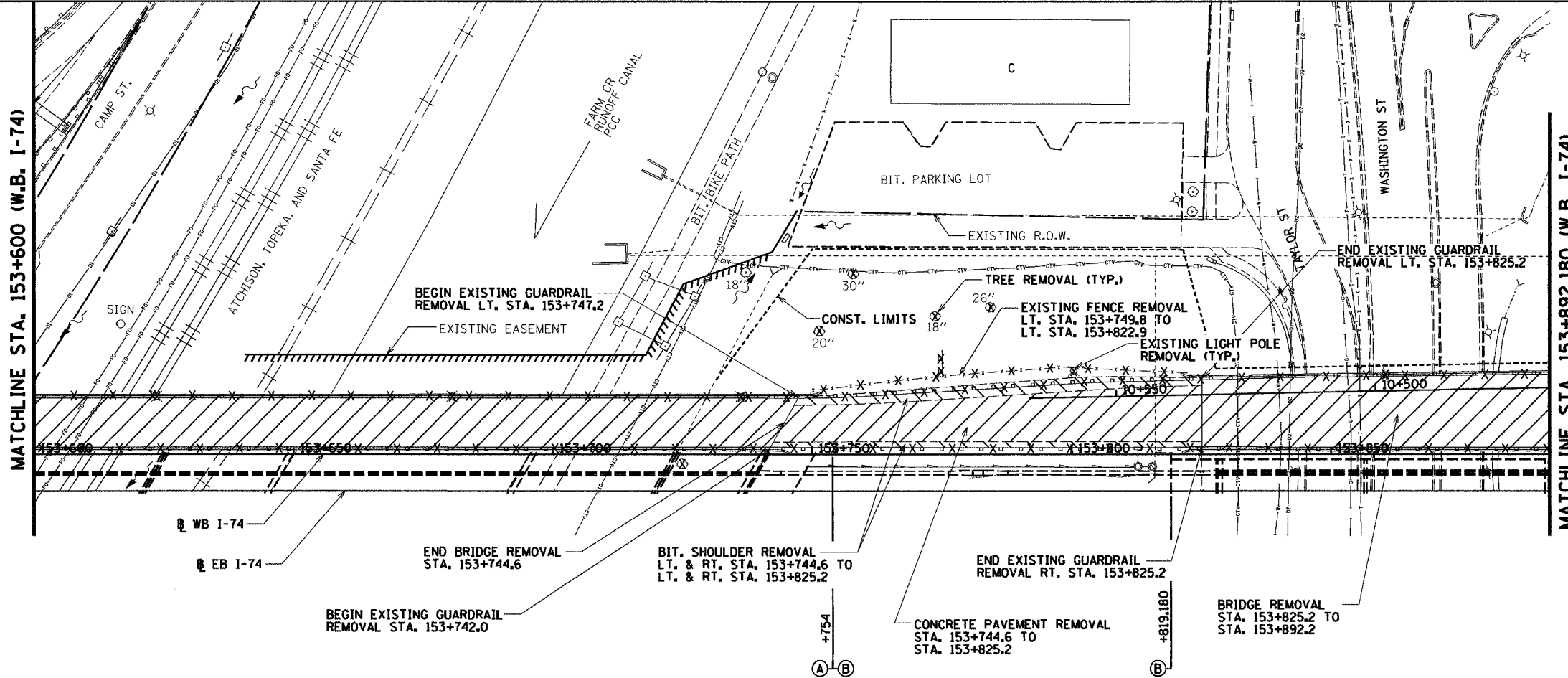


F.A.I. RTE.	SECTION	COUNTY	TOTAL SHEETS	SHEET NO.
74	90-10R-2903,14,14-1R-1	TAZEWELL	1366	217
STA. 153+600.000 TO STA. 153+892.180				
FED. ROAD DIST. NO. 4 ILLINOIS FED. AID PROJECT				

REMOVAL LEGEND

- PAVEMENT REMOVAL
- SHOULDER REMOVAL
- DRIVEWAY PAVEMENT REMOVAL
- SIDEWALK REMOVAL
- CURB & GUTTER REMOVAL
- GUARDRAIL REMOVAL
- BITUMINOUS SURFACE REMOVAL
- BITUMINOUS TAPER (FOR BUTT JOINTS)
- MEDIAN/ISLAND REMOVAL
- TREE REMOVAL



LEGEND

- = HIGH MAST LIGHT POLE AND FOUNDATION (SEE LIGHTING PLANS)

REVISIONS	
NAME	DATE



ILLINOIS DEPARTMENT OF TRANSPORTATION
**PROPOSED ROADWAY PLAN
 AND REMOVAL PLAN**
 WESTBOUND I-74
 STA. 153+600.000 TO
 STA. 153+892.180
 DRAWN BY BKN
 DATE 12/20/04 CHECKED BY MLB

12/20/04 3:58:47 PM
 I:\projects\68201\68201.dwg
 12/20/04 3:58:47 PM