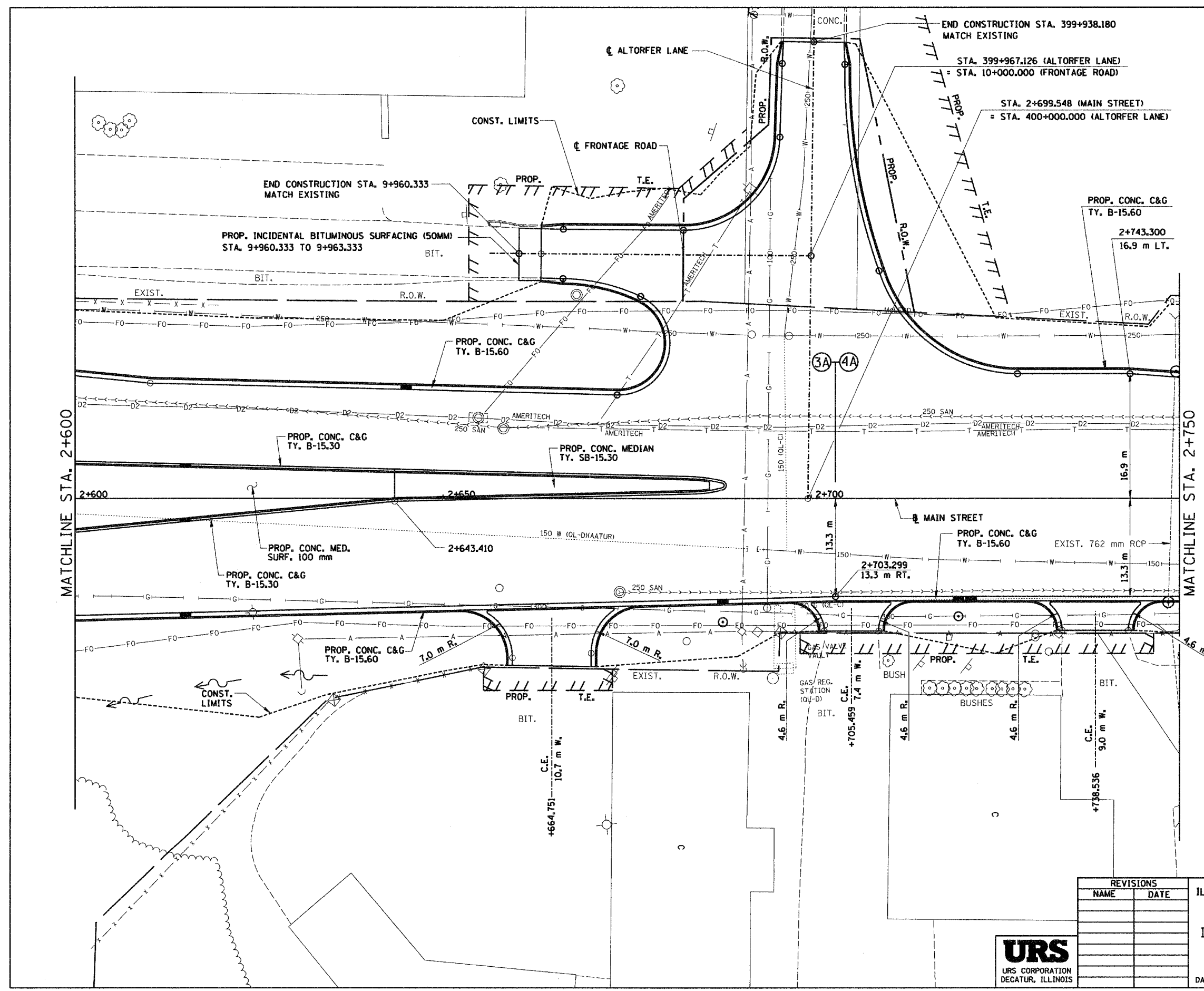
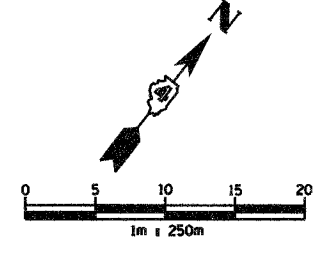


D:\projects\roadway\1116-150-main.dgn 12/17/2004 9:30:50 AM

83201				
F.A.I. RTE.	SECTION	COUNTY	TOTAL SHEETS	SHEET NO.
74	*	TAZEWELL	1366	224
STA. 2+600.000 TO STA. 2+750.000				
FED. ROAD DIST. NO.			ILLINOIS FED. AID PROJECT	
*(90-IBR-21903,4,14-DR-1				



REVISIONS	
NAME	DATE



ILLINOIS DEPARTMENT OF TRANSPORTATION  
 PROPOSED ROADWAY PLAN  
 ILL. 116 - U.S. 150 - MAIN ST.  
 STA. 2+600 TO STA. 2+750  
 DRAWN BY SRS  
 CHECKED BY JJM  
 DATE 12-20-04