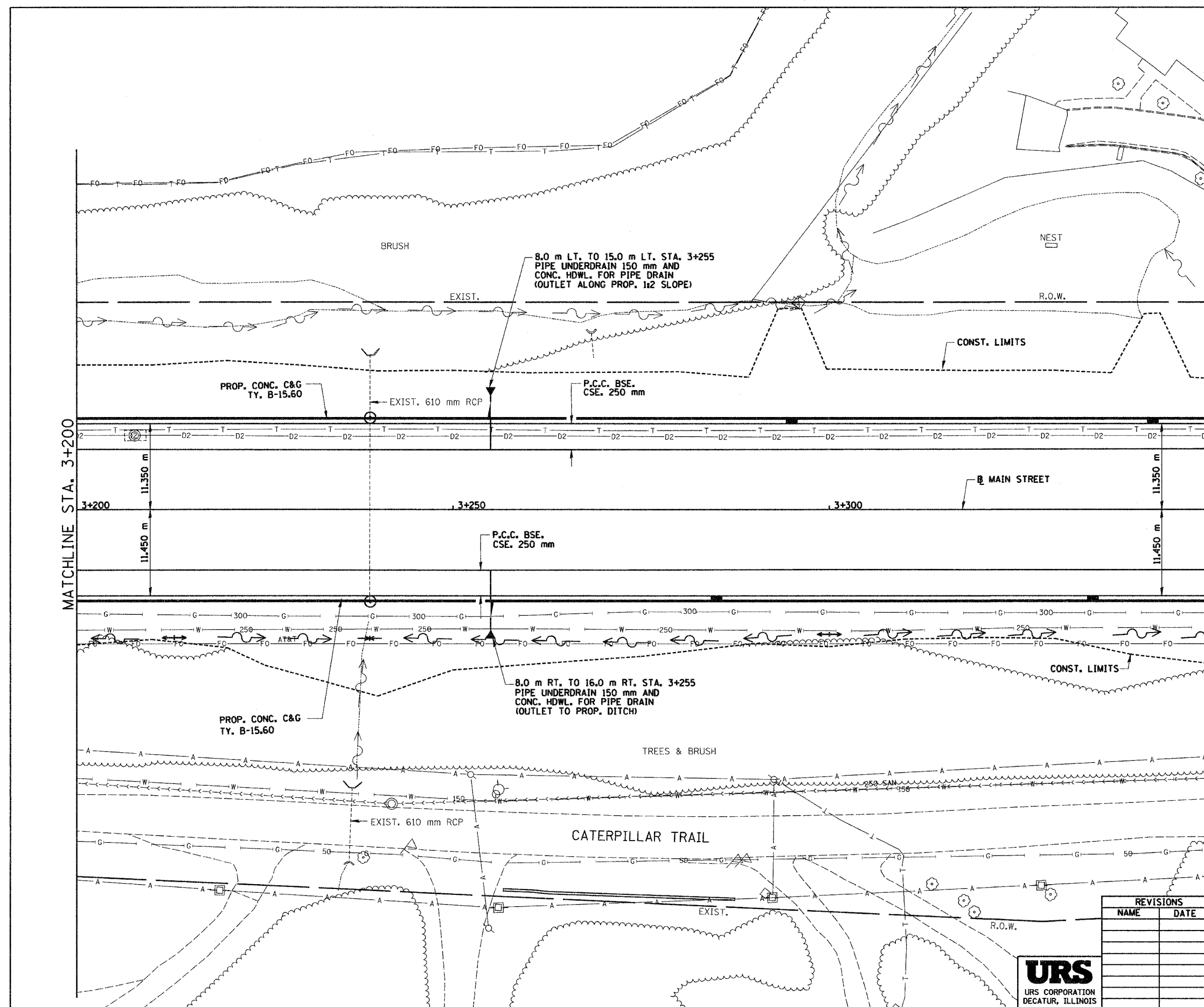
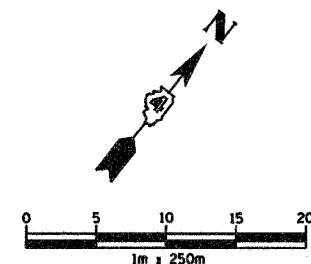


F.A.I. RTE.	SECTION	COUNTY	TOTAL SHEETS	SHEET NO.
74	*	TAZEWELL	1366	32
STA. 3+200.000		TO STA. 3+350.000		
FED. ROAD DIST. NO.		ILLINOIS FED. AID PROJECT		

* (90-IBR-2) 90(3,4,14-IBR-1



MATCHLINE STA. 3+200

MATCHLINE STA. 3+350

REVISIONS	
NAME	DATE



ILLINOIS DEPARTMENT OF TRANSPORTATION
 PROPOSED ROADWAY PLAN
 ILL. 116 - U.S. 150 - MAIN ST.
 STA. 3+200 TO STA. 3+350
 DRAWN BY SRS
 CHECKED BY JJM
 DATE 12-20-04

PLT BR SE 6 P002/11/21 vbp ems-021101/sepoc/28sep04