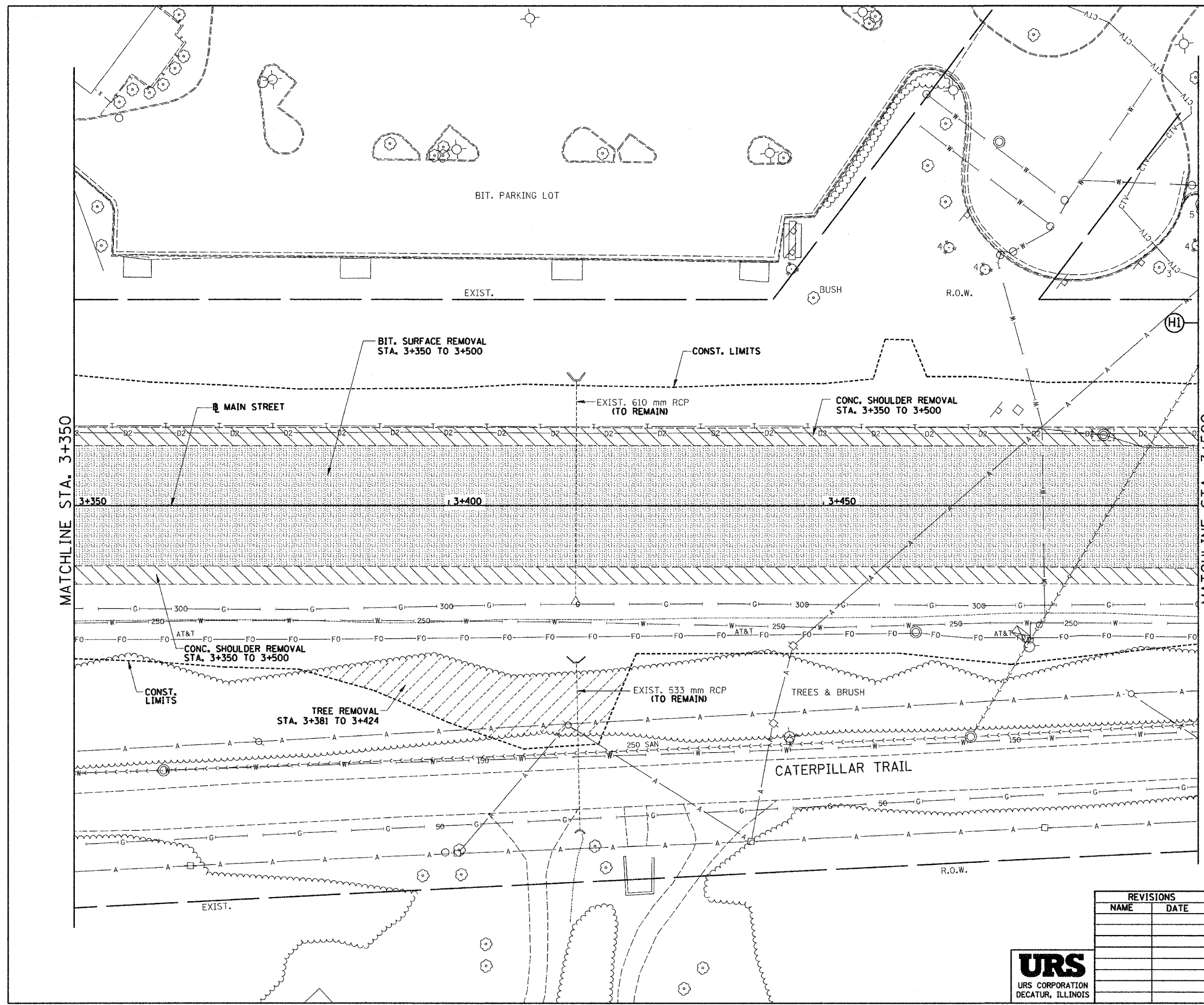
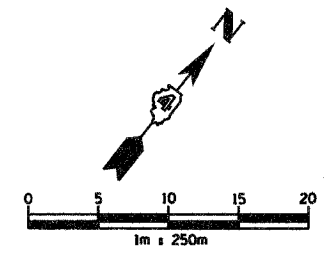


D:\p04001\roadway\101121-15ana.dgn 12/17/2004 9:36:17 AM

68201

F.A.I. RTE.	SECTION	COUNTY	TOTAL SHEETS	SHEET NO.
74	*	TAZEWELL	1366	233
STA. 3+350.000		TO STA. 3+500.000		
FED. ROAD DIST. NO.		ILLINOIS FED. AID PROJECT		

*190-10R-2;9013,14,14-1R-1



REMOVAL LEGEND

- PAVEMENT REMOVAL
- SHOULDER REMOVAL
- DRIVEWAY PAVEMENT REMOVAL
- SIDEWALK REMOVAL
- CURB & GUTTER REMOVAL
- GUARDRAIL REMOVAL
- BITUMINOUS SURFACE REMOVAL
- BITUMINOUS TAPER (FOR BUTT JOINTS)
- MEDIAN/ISLAND REMOVAL
- TREE REMOVAL (ha)
- TREE REMOVAL

REVISIONS	
NAME	DATE

ILLINOIS DEPARTMENT OF TRANSPORTATION
 EXISTING ROADWAY PLAN
 ILL. 116 - U.S. 150 - MAIN ST.
 STA. 3+350 TO STA. 3+500
 DRAWN BY SRS
 CHECKED BY JJM
 DATE 12-20-04

