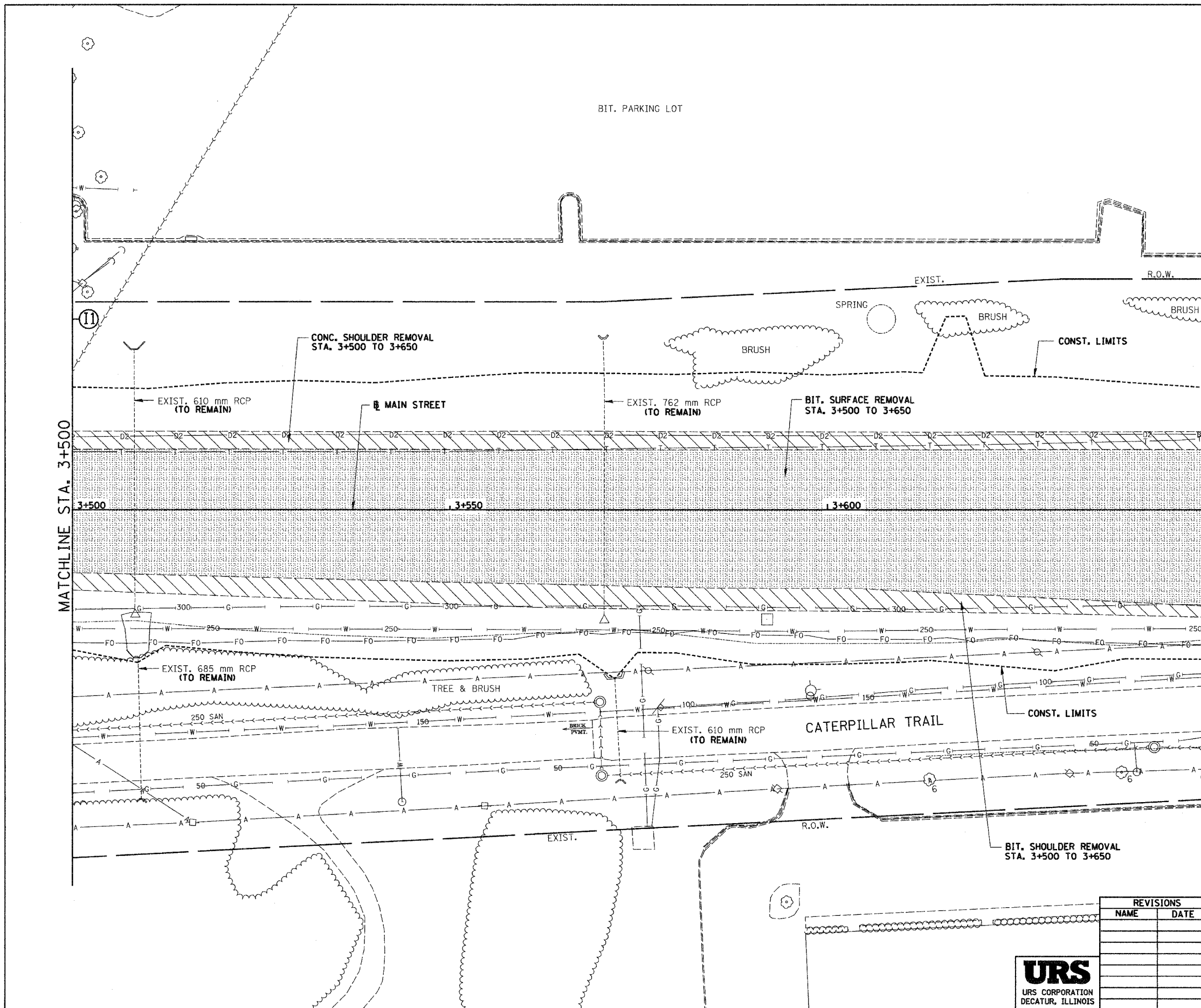
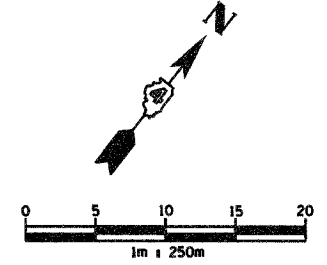


D:\projects\roadway\101123-same.dwg 12/17/2004 3:21 PM

68201

F.A.I. RTE.	SECTION	COUNTY	TOTAL SHEETS	SHEET NO.
74	*	TAZEWELL	1366	235
STA. 3+500.000		TO STA. 3+650.000		
FED. ROAD DIST. NO.	ILLINOIS	FED. AID PROJECT		

*190-10R-219013,14,14-1R-1



REMOVAL LEGEND

- PAVEMENT REMOVAL
- SHOULDER REMOVAL
- DRIVEWAY PAVEMENT REMOVAL
- SIDEWALK REMOVAL
- CURB & GUTTER REMOVAL
- GUARDRAIL REMOVAL
- BITUMINOUS SURFACE REMOVAL
- BITUMINOUS TAPER (FOR BUTT JOINTS)
- MEDIAN/ISLAND REMOVAL
- TREE REMOVAL (ha)
- TREE REMOVAL

REVISIONS	
NAME	DATE



ILLINOIS DEPARTMENT OF TRANSPORTATION
 EXISTING ROADWAY PLAN
 ILL. 116 - U.S. 150 - MAIN ST.
 STA. 3+500 TO STA. 3+650
 DRAWN BY SRS
 CHECKED BY JJM
 DATE 12-20-04