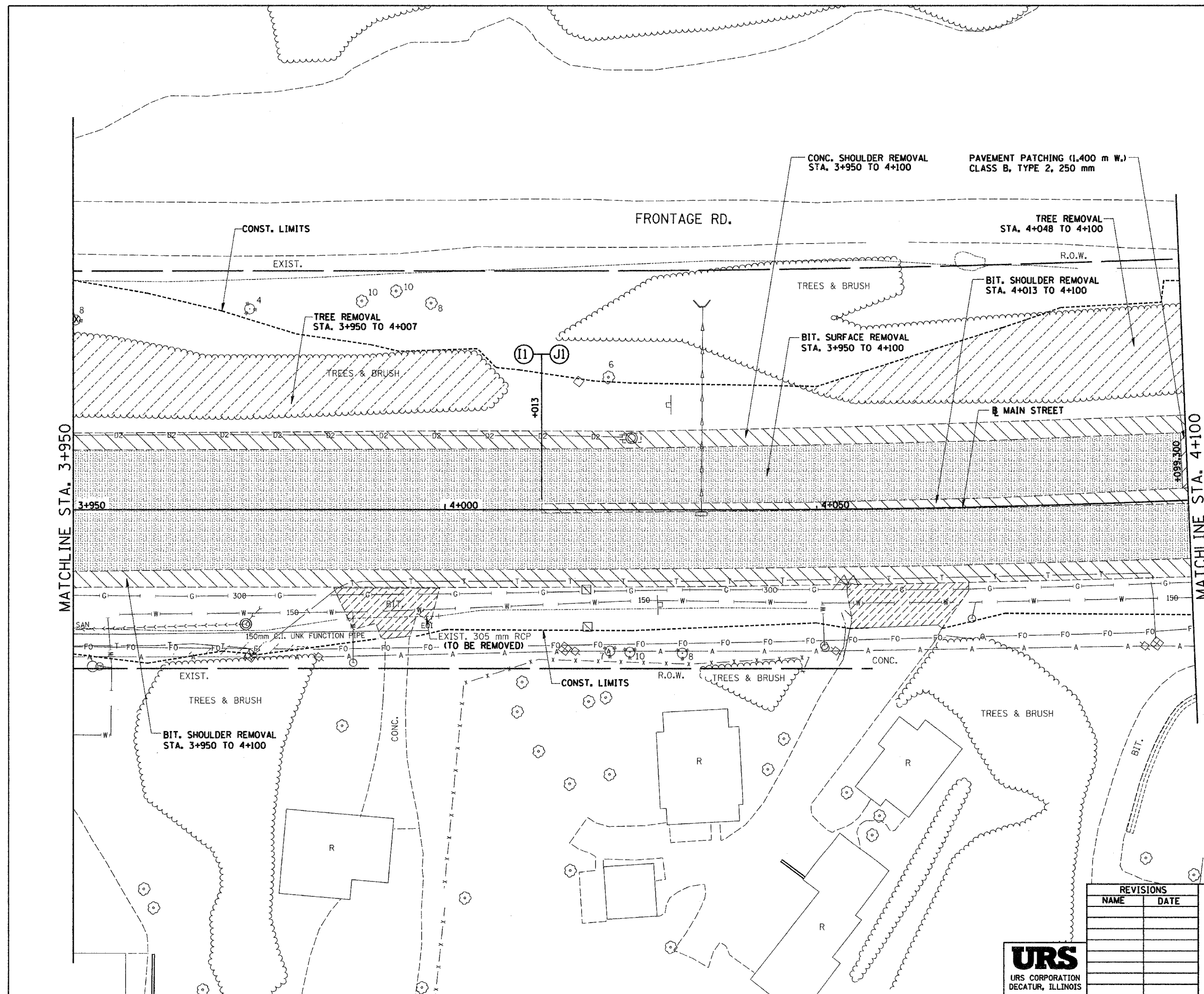
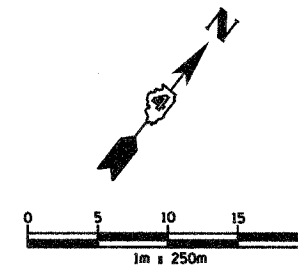


F.A.I. RTE.	SECTION	COUNTY	TOTAL SHEETS	SHEET NO.
74	*	TAZEWELL	1366	241
STA. 3+950.000		TO STA. 4+100.000		
FED. ROAD DIST. NO.		ILLINOIS FED. AID PROJECT		
* (90-IBR-2) 9013, 14, 14-1R-1				



**REMOVAL LEGEND**

- PAVEMENT REMOVAL
- SHOULDER REMOVAL
- DRIVEWAY PAVEMENT REMOVAL
- SIDEWALK REMOVAL
- CURB & GUTTER REMOVAL
- GUARDRAIL REMOVAL
- BITUMINOUS SURFACE REMOVAL
- BITUMINOUS TAPER (FOR BUTT JOINTS)
- MEDIAN/ISLAND REMOVAL
- TREE REMOVAL (ha)
- TREE REMOVAL

REVISIONS	
NAME	DATE

ILLINOIS DEPARTMENT OF TRANSPORTATION  
**EXISTING ROADWAY PLAN**  
 ILL. 116 - U.S. 150 - MAIN ST.  
 STA. 3+950 TO STA. 4+100  
 DRAWN BY SRS  
 CHECKED BY JJM  
 DATE 12-20-04



NY 92 17 16 1002/17/21 ulp: emf-861101/emprou/288804