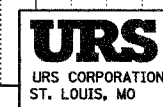
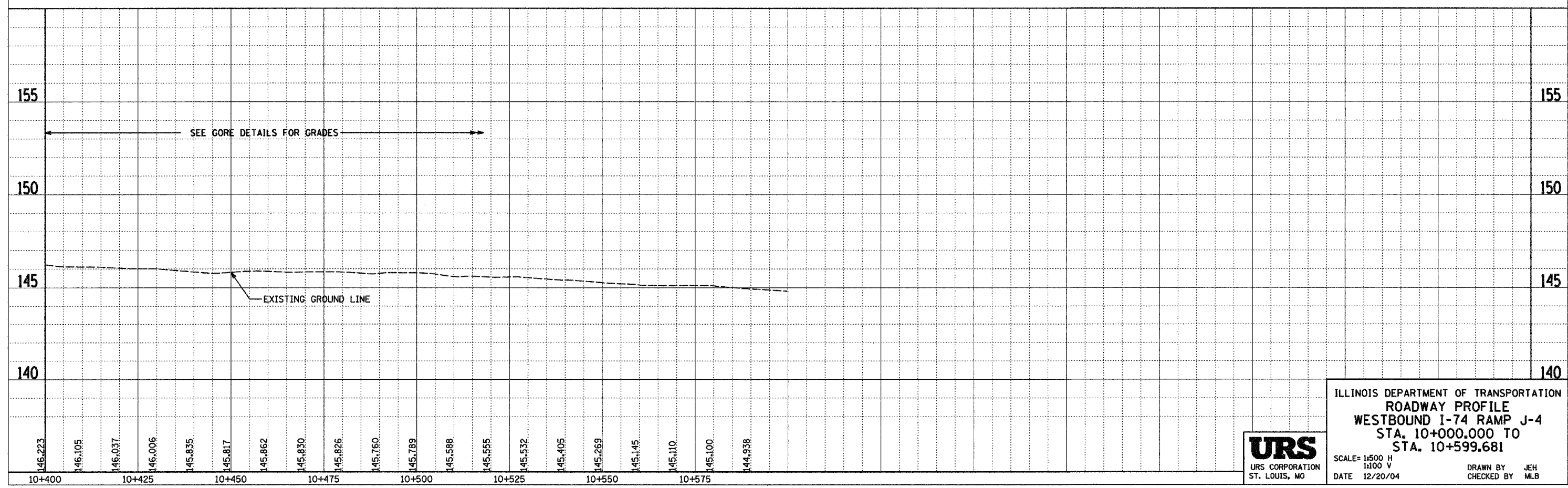
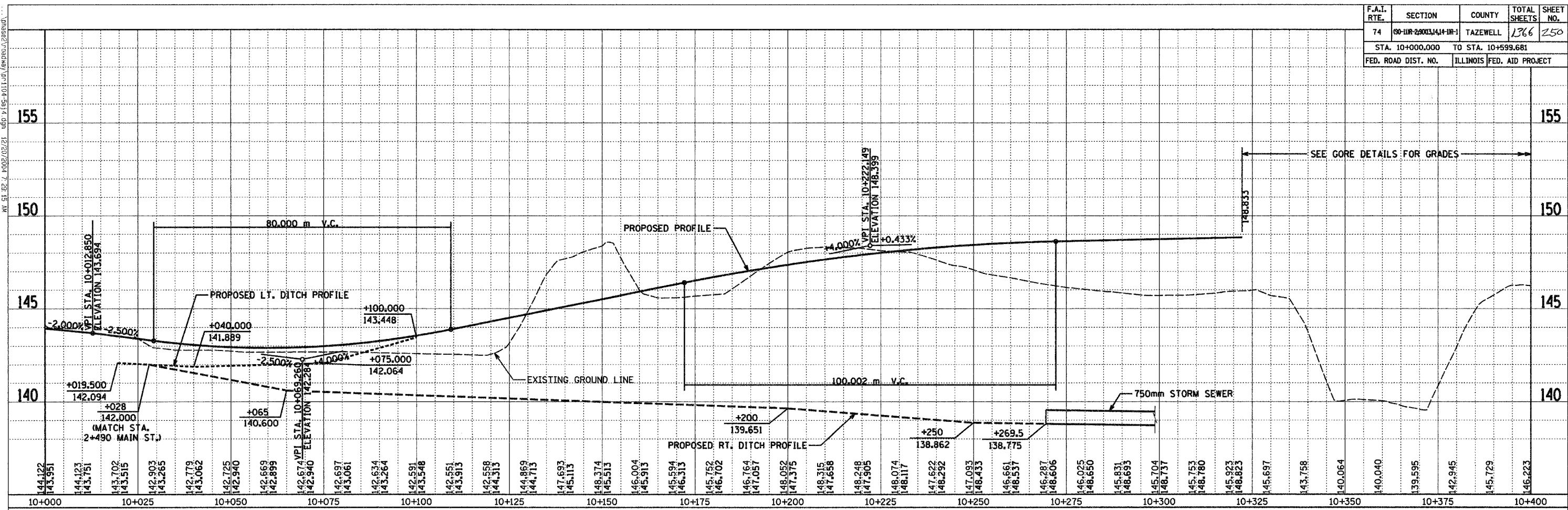


F.A.I. RTE.	SECTION	COUNTY	TOTAL SHEETS	SHEET NO.
74	90-11R-2003J414-1R-1	TAZEWELL	1366	250
STA. 10+000.000		TO STA. 10+599.681		
FED. ROAD DIST. NO.		ILLINOIS FED. AID PROJECT		



ILLINOIS DEPARTMENT OF TRANSPORTATION
 ROADWAY PROFILE
 WESTBOUND I-74 RAMP J-4
 STA. 10+000.000 TO
 STA. 10+599.681

SCALE= 1:500 H
 1:100 V
 DATE 12/20/04
 DRAWN BY JEH
 CHECKED BY MLB