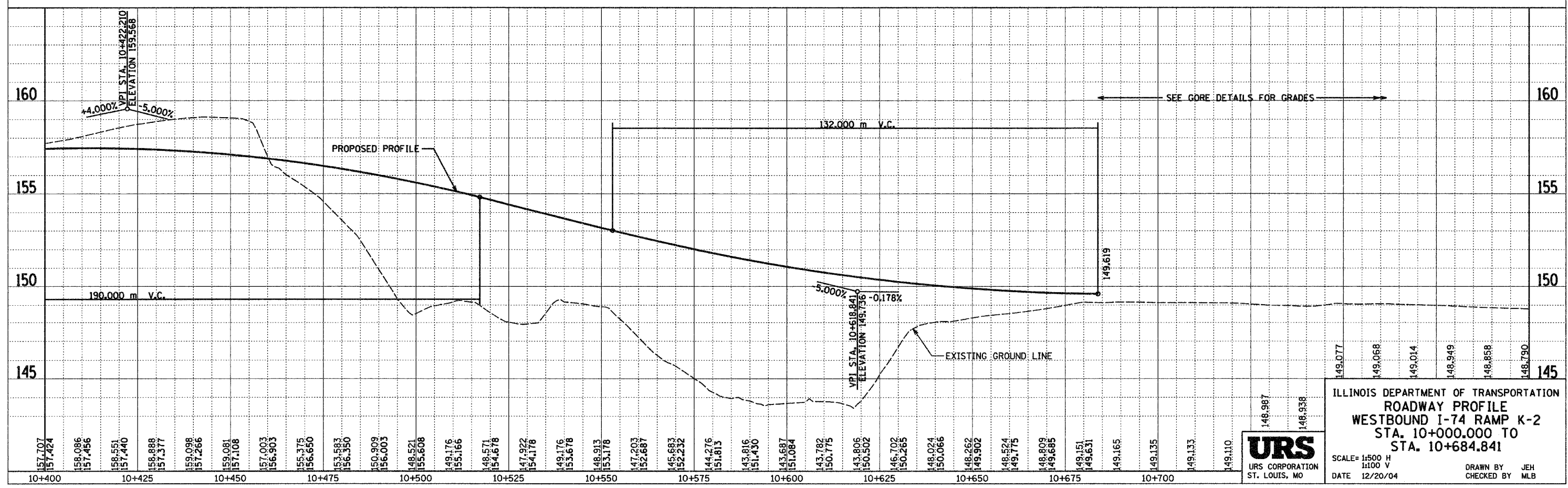
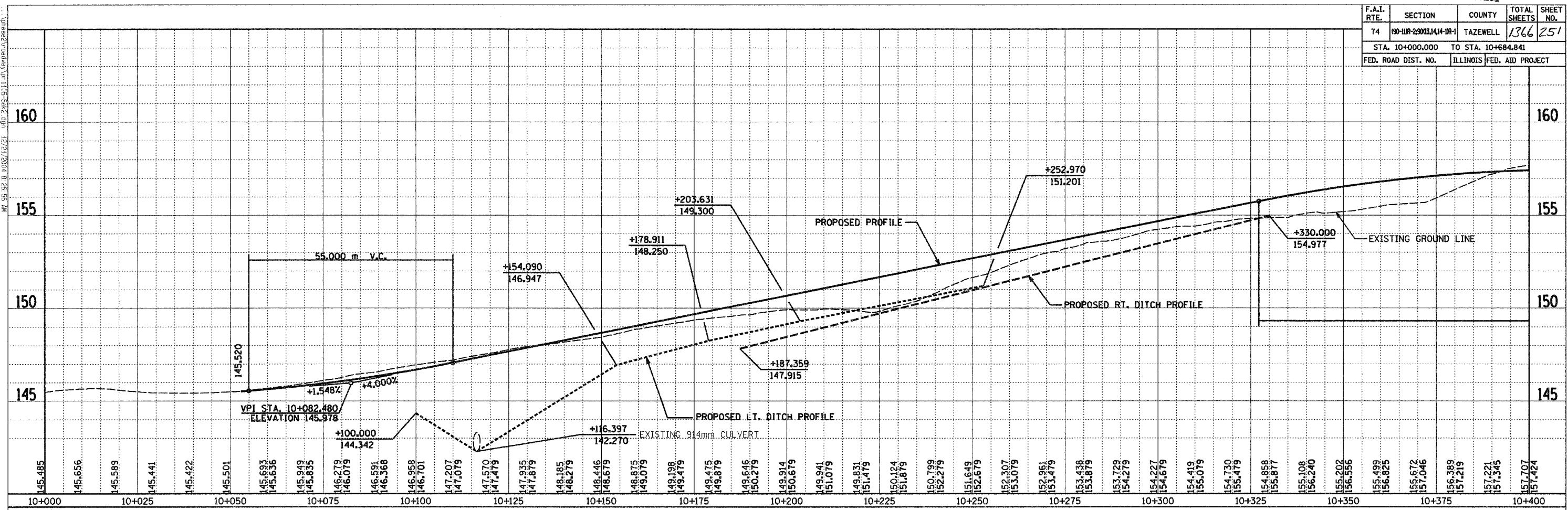


F.A.I. RTE.	SECTION	COUNTY	TOTAL SHEETS	SHEET NO.
74	90-11R-20013,14,14-1R-1	TAZEWELL	1366	251
STA. 10+000.000		TO STA. 10+684.841		
FED. ROAD DIST. NO.		ILLINOIS FED. AID PROJECT		



ILLINOIS DEPARTMENT OF TRANSPORTATION
ROADWAY PROFILE
 WESTBOUND I-74 RAMP K-2
 STA. 10+000.000 TO
 STA. 10+684.841

SCALE= 1:500 H
 1:100 V

DATE 12/20/04

DRAWN BY JEH
 CHECKED BY MLB

URS
 URS CORPORATION
 ST. LOUIS, MO