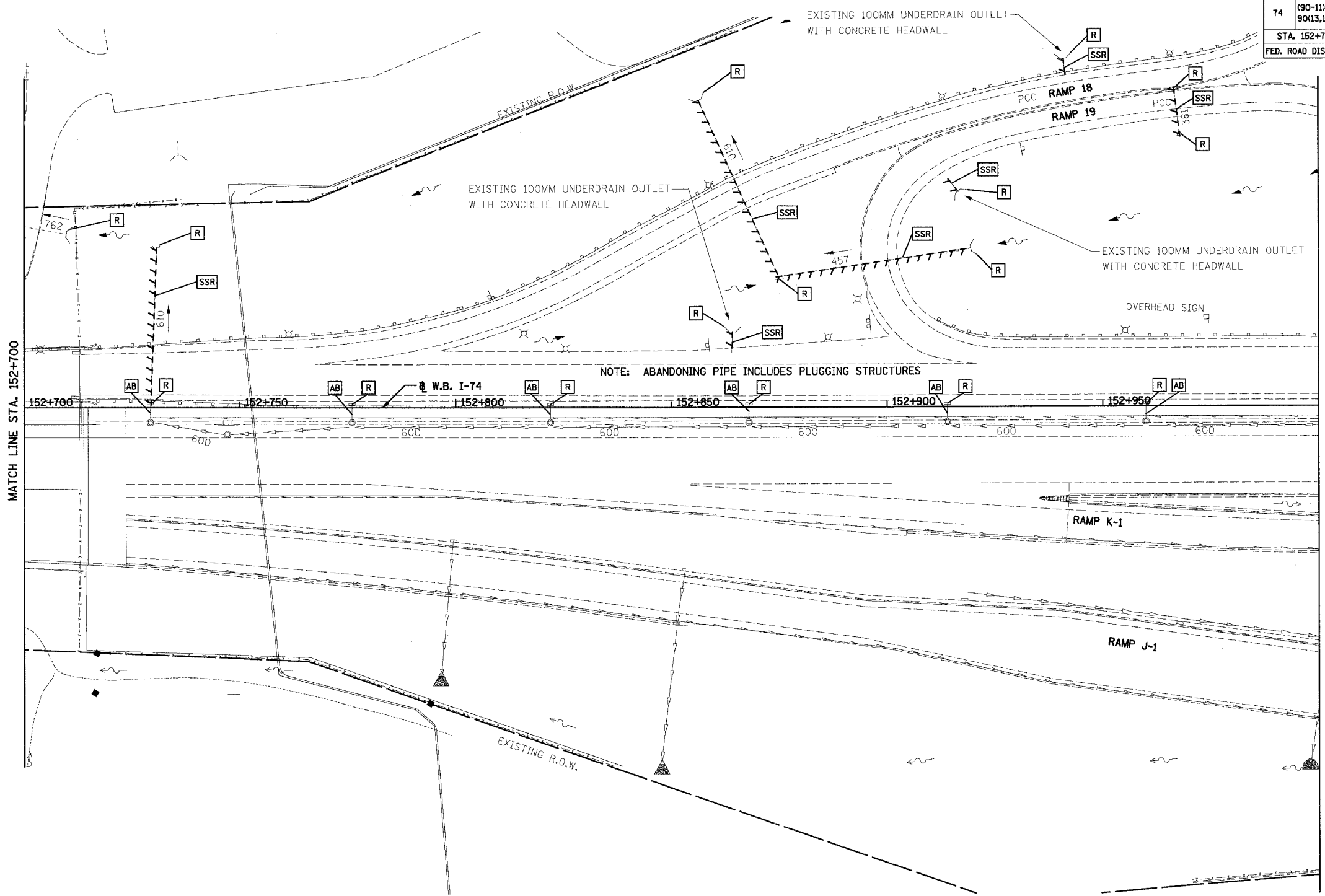
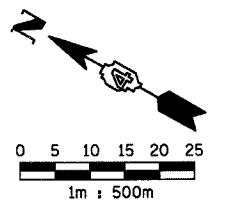


F.A.I. RTE.	SECTION	COUNTY	TOTAL SHEETS	SHEET NO.
74	(90-11R-2; 90(13,14,14-1R)-1	TAZEWELL	1366	267
STA. 152+700		TO STA. 153+000		
FED. ROAD DIST. NO. 4		ILLINOIS FED. AID PROJECT		



NOTE: ABANDONING PIPE INCLUDES PLUGGING STRUCTURES

DRAINAGE LEGEND

○	CATCH BASIN	[R]	STRUCTURE TO BE REMOVED
□	INLET	[SSR]	STORM SEWER REMOVAL
⊙	MANHOLE	[F]	STRUCTURE TO BE FILLED
◁	CULVERT END SECTION	[AB]	ITEM TO BE ABANDONED
→	DITCH FLOW	—	HEADWALL
		—	STORM SEWER
		---	CULVERT LINE
			REMOVAL ITEM

EXISTING DRAINAGE SHEET 2 OF 5

REVISIONS	
NAME	DATE

ILLINOIS DEPARTMENT OF TRANSPORTATION
 F.A.I. ROUTE 74 (I-74)
 DRAINAGE AND UTILITY PLAN
 STA. 152+700 TO STA. 153+000 W.B. I-74
 DATE 12-20-2004
 DRAWN BY RTG
 CHECKED BY RTG

