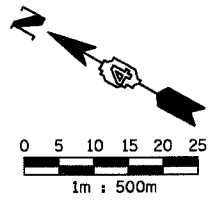
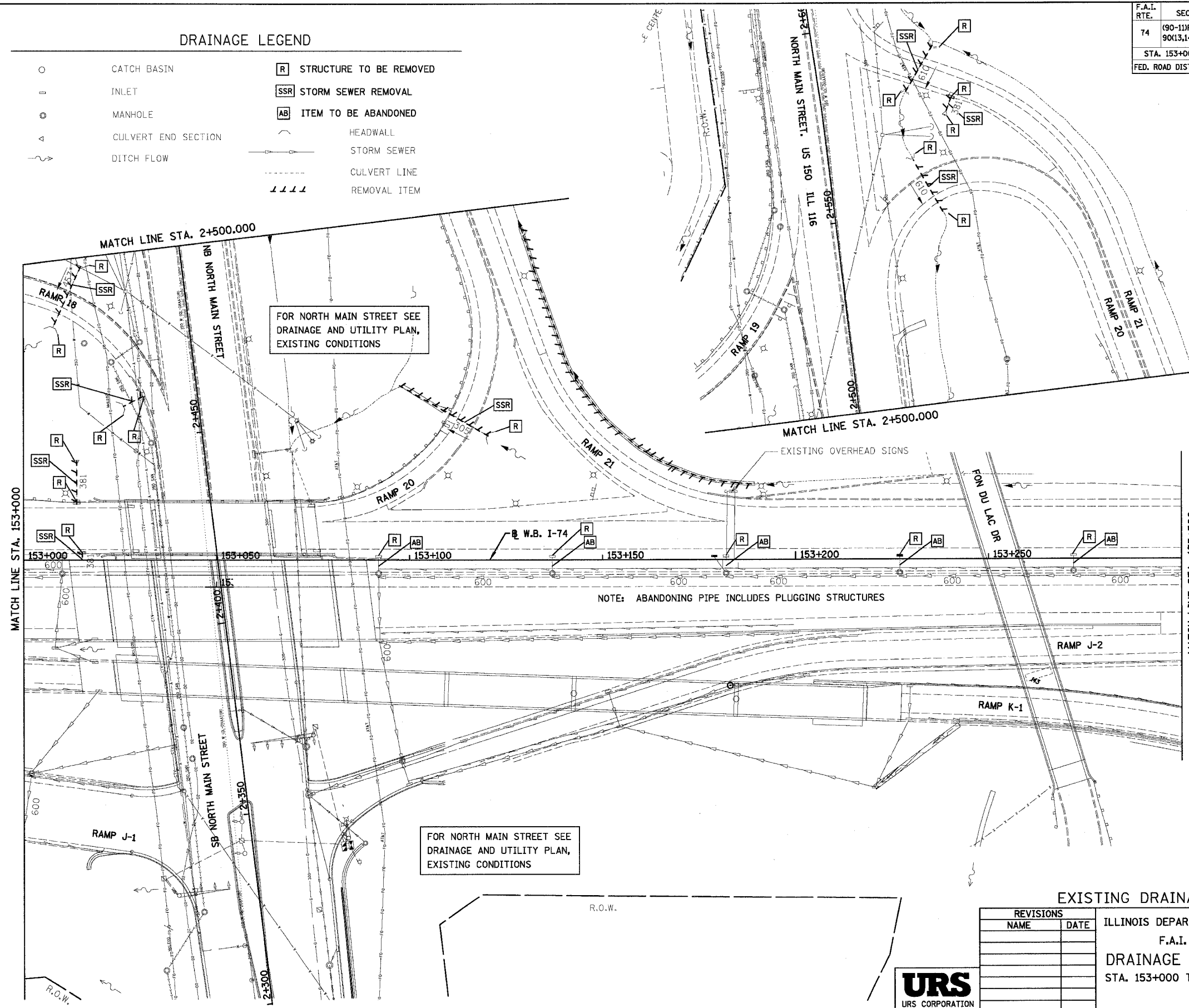


F.A.I. RTE.	SECTION	COUNTY	TOTAL SHEETS	SHEET NO.
74	90-11R-2; 90(13,14,14-1)R-1	TAZEWELL	1366	260
STA. 153+000		TO STA. 153+300		
FED. ROAD DIST. NO. 4		ILLINOIS FED. AID PROJECT		



DRAINAGE LEGEND

- | | | | |
|---|---------------------|-----|-------------------------|
| ○ | CATCH BASIN | □ R | STRUCTURE TO BE REMOVED |
| ⊥ | INLET | SSR | STORM SEWER REMOVAL |
| ⊙ | MANHOLE | AB | ITEM TO BE ABANDONED |
| △ | CULVERT END SECTION | — | HEADWALL |
| ~ | DITCH FLOW | — | STORM SEWER |
| | | --- | CULVERT LINE |
| | | | REMOVAL ITEM |



EXISTING DRAINAGE SHEET 3 OF 5

REVISIONS	
NAME	DATE

ILLINOIS DEPARTMENT OF TRANSPORTATION
 F.A.I. ROUTE 74 (I-74)
DRAINAGE AND UTILITY PLAN
 STA. 153+000 TO STA. 153+300 W.B. I-74
 DATE 12-20-2004
 DRAWN BY RTG
 CHECKED BY RTG

