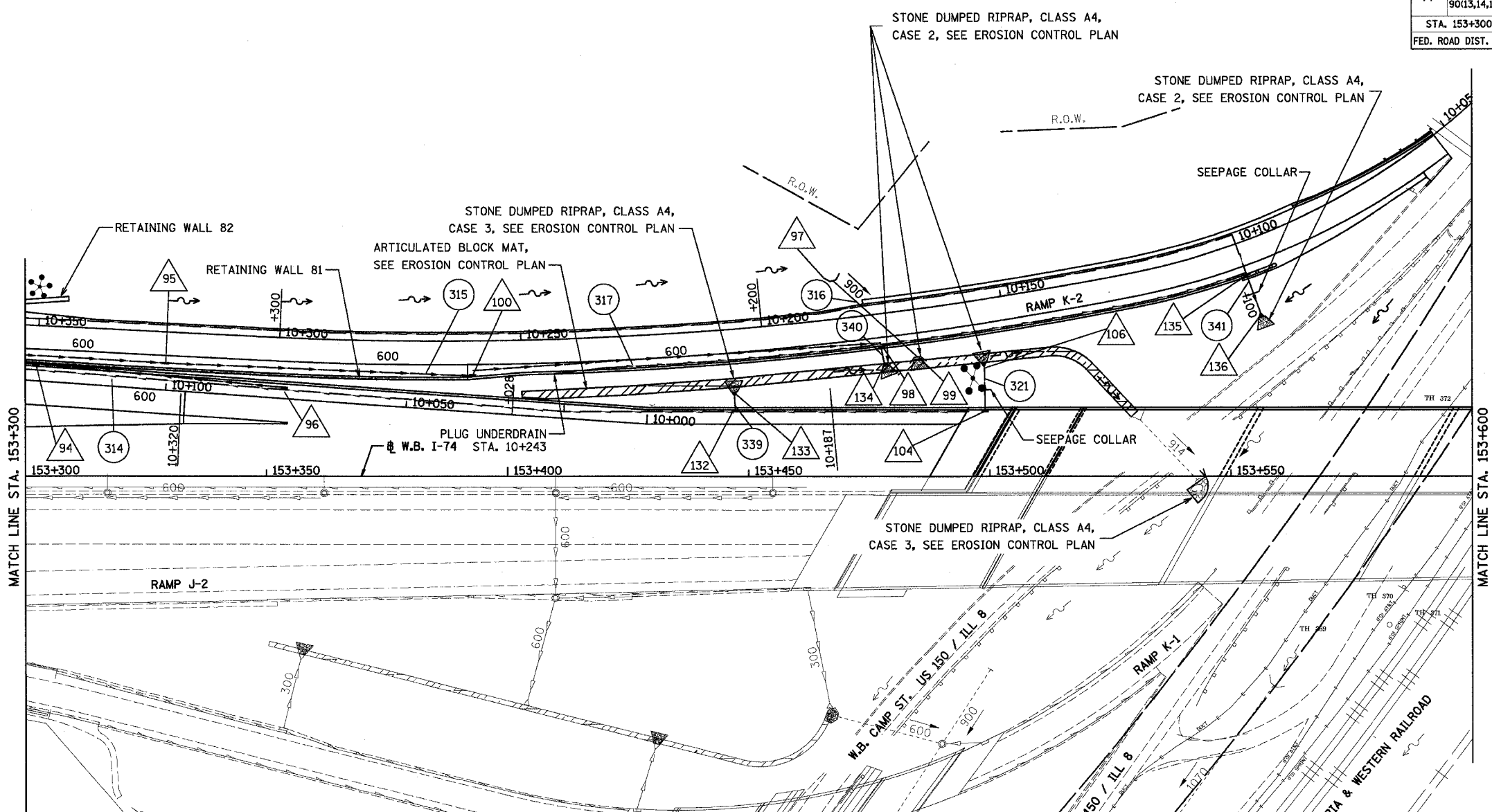
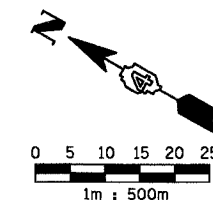


F.A.I. RTE.	SECTION	COUNTY	TOTAL SHEETS	SHEET NO.
74	(90-11R-2; 90(13,14,14-1R-1)	TAZEWELL	1366	264
STA. 153+300		TO STA. 153+600		
FED. ROAD DIST. NO. 4 ILLINOIS FED. AID PROJECT				



EXISTING	PROPOSED	LEGEND
○	○	CATCH BASIN
□	□	INLET
○	○	MANHOLE
△	△	CULVERT END SECTION
⌋	⌋	HEADWALL
⌋	⌋	SAG
↔	↔	SUMMIT
→	→	DITCH
→	→	DITCH FLOW
→	→	PIPE UNDERDRAIN
→	→	STORM SEWER
→	→	CULVERT LINE
	▨	ARTICULATED BLOCK MAT
	①	STRUCTURE NUMBER
	①	STORM SEWER PIPE NUMBER
	+638	UNDERDRAIN OUTLET
	*	HIGH MAST LIGHTING (SEE LIGHTING PLANS)

NOTE: FOR UNDERDRAIN INFORMATION SEE SCHEDULE OF QUANTITIES

PROPOSED DRAINAGE SHEET 4 OF 5

REVISIONS		ILLINOIS DEPARTMENT OF TRANSPORTATION F.A.I. ROUTE 74 (I-74) DRAINAGE AND UTILITY PLAN STA. 153+300 TO STA. 153+600 W.B. I-74
NAME	DATE	
		URS CORPORATION CHICAGO, ILLINOIS DATE 12-20-2004 DRAWN BY RTG CHECKED BY RTG

