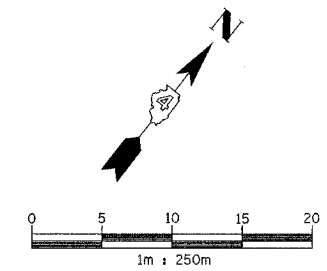


| F.A.I. RTE. | SECTION | COUNTY | TOTAL SHEETS NO. | SHEET NO. |
|----------------------------------|---------|----------|---------------------------|-----------|
| 74 | * | TAZEWELL | 1366 | 280 |
| STA. 2+900,000 TO STA. 3+050,000 | | | ILLINOIS FED. AID PROJECT | |
| FED. ROAD DIST. NO. 4 | | | | |
| * 190-111R-2190(13,14,14-11R-1 | | | | |

DISPOSITION OF EXISTING DRAINAGE FEATURES

- [A] STRUCTURE TO BE ADJUSTED WITH NEW FRAME AND GRATE
- [A] STRUCTURE TO BE ADJUSTED WITH NEW FRAME AND LID
- [ADJ] STRUCTURE TO BE ADJUSTED
- [C] STRUCTURE TO BE CLEANED
- [F] STRUCTURE TO BE FILLED
- [REC] STRUCTURE TO BE RECONSTRUCTED WITH NEW FRAME AND LID
- [R] STRUCTURE TO BE REMOVED
- [AB] ITEM TO BE ABANDONED
- [REL] ITEM TO BE RELOCATED
- [SSR] STORM SEWER REMOVAL
- [SSC] STORM SEWER TO BE CLEANED

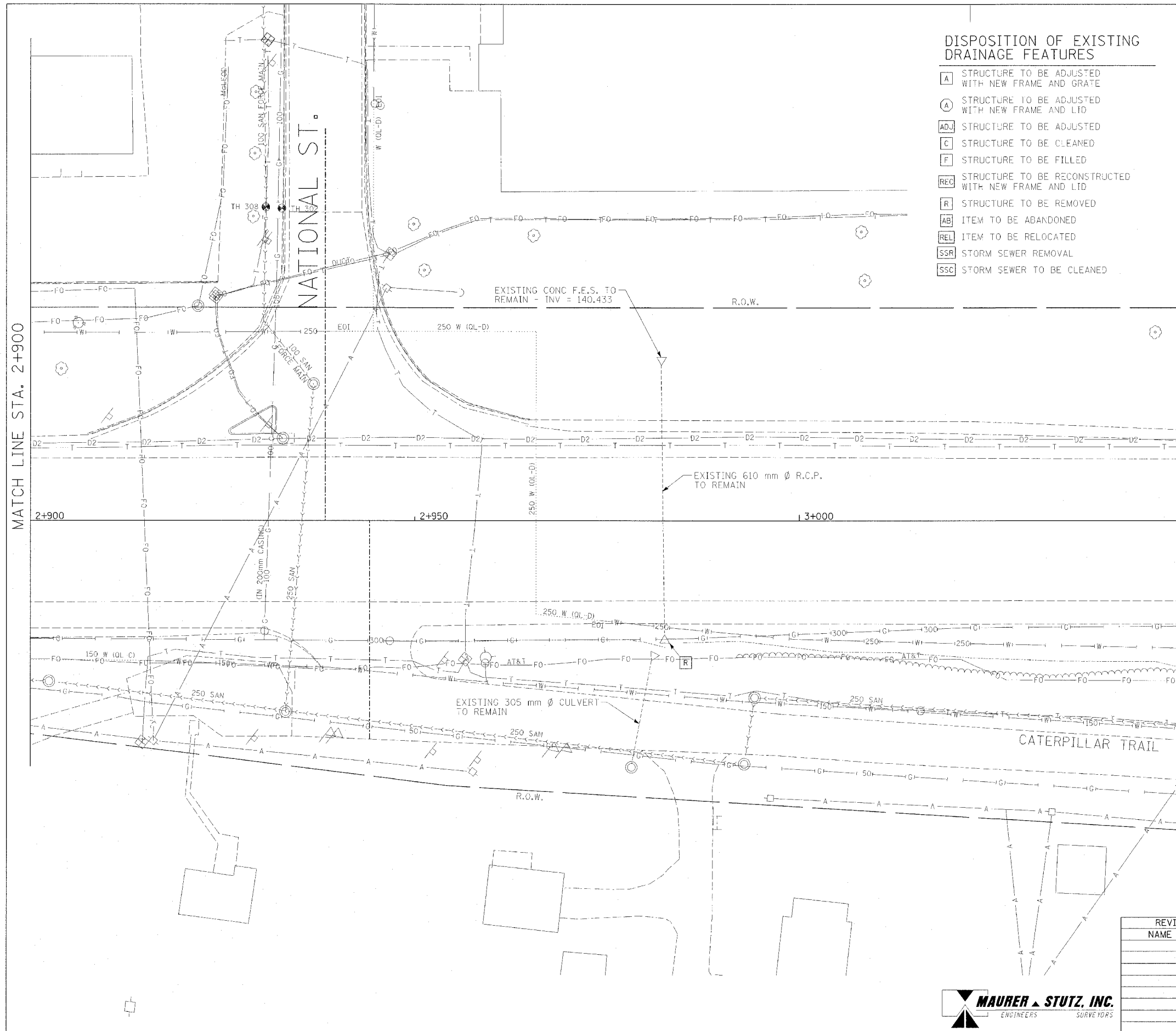


EXISTING DRAINAGE AND UTILITY LEGEND

- A— OVERHEAD ELECTRIC
- S— STORM SEWER
- SS— SANITARY SEWER
- - - - CULVERT PIPE
- T— TRENCH DRAIN
- T— UNDERGROUND TELEPHONE
- FO— UNDERGROUND FIBER OPTIC
- D— UNDERGROUND COMMUNICATIONS DUCT
- W— UNDERGROUND WATER MAIN
- G— UNDERGROUND GAS MAIN
- H— HEADWALL
- I— INLET
- E— CONC END SECTION
- M— UTILITY MANHOLE
- S— ELECTRIC/TELEPHONE SPLICE BOX
- T— TRAFFIC SIGNAL HANDHOLE
- P— POWER POLE
- T— TELEPHONE POLE
- L— HIGH MAST LIGHT
- T— ABOVE GROUND TRANSFORMER
- V— WATER VALVE OR UTIL. BOX
- F— FIRE HYDRANT
- S— RAILROAD SWITCH
- S— RAILROAD SIGNAL
- J— FIBER OPTIC JUNCTION BOX

MATCH LINE STA. 2+900

MATCH LINE STA. 3+050



EXISTING CONDITIONS

| REVISIONS | |
|-----------|------|
| NAME | DATE |
| | |
| | |
| | |
| | |
| | |
| | |
| | |
| | |
| | |
| | |

ILLINOIS DEPARTMENT OF TRANSPORTATION
DRAINAGE AND UTILITY PLAN
MAIN STREET
 STA 2+900 TO 3+050
 DATE 12/20/04
 DRAWN BY JAM
 CHECKED BY MJS

