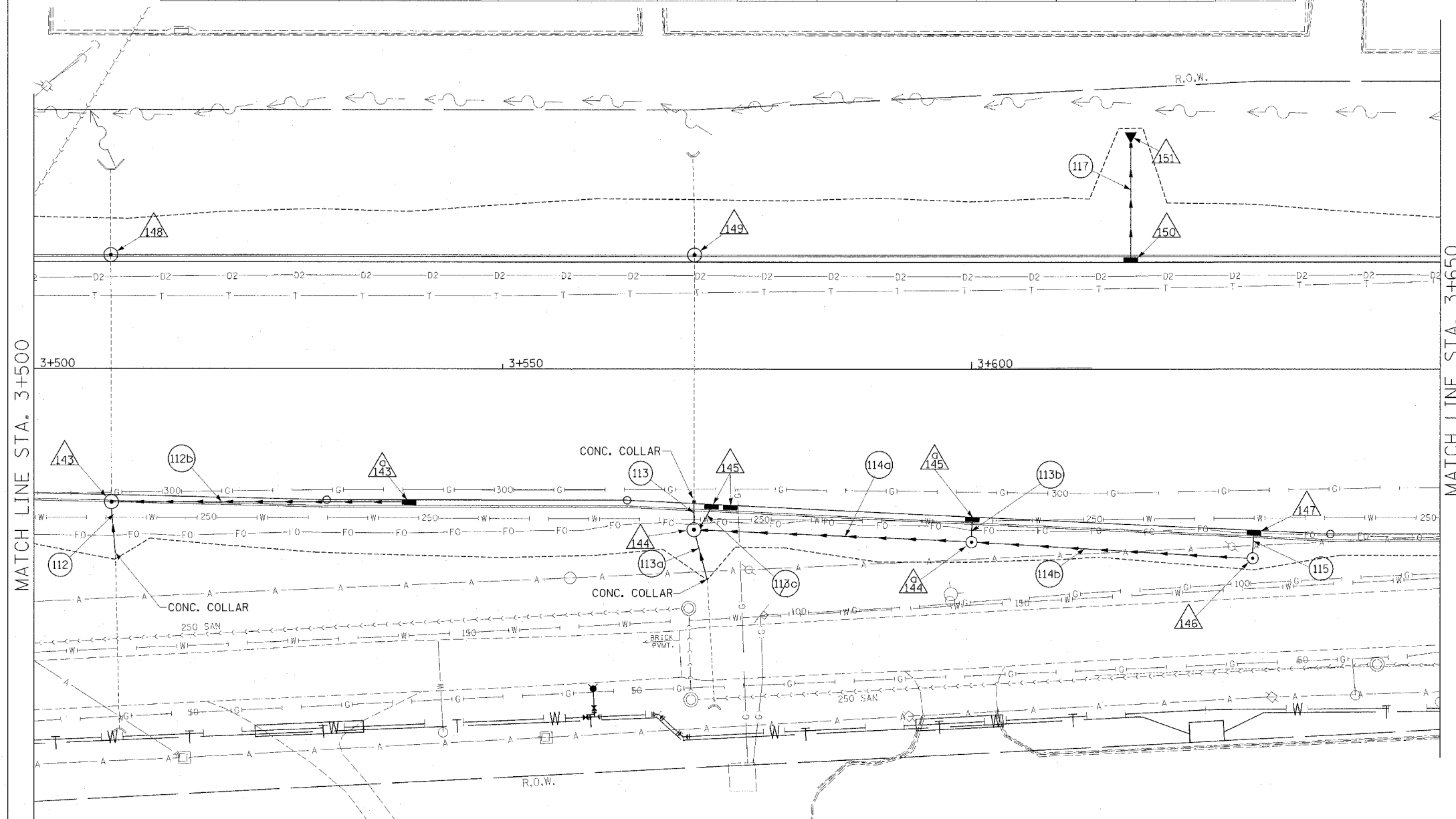
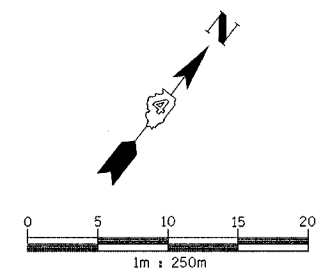


F.A.I. RTE.	SECTION	COUNTY	TOTAL SHEETS NO.
74	*	TAZEWELL	1366 289
STA. 3+500.000		TO STA. 3+650.000	
FED. ROAD DIST. NO. 4		ILLINOIS FED. AID PROJECT	
* (90-11R-2)90(13,14,14-1R-1			

STRUCTURE NO.	143	143a	144	144a	145	145a	146	147	148	149	150	151
STATION	3+508.267	3+540.000	3+570.413	3+600.000	3+572.297	3+574.288	3+600.000	3+630.000	3+630.000	3+508.195	3+570.456	3+617.000
OFFSET	13.293 R	13.868 R	17.000 R	18.275 R	14.282 R	14.380 R	15.635 R	20.022 R	17.075 R	11.350 L	11.350 L	20.336 L
TYPE	INL MH G-1 SPE 1.5m	INL G-1 SPE	MH TY A 1.5m	MH TY A 1.2m	INL G-1 DOUBLE SPECIAL	INL G-1 SPE	MH TY A 1.2m	INL G-1 SPE	INL MH G-1 SPE 1.5m	INL MH G-1 SPE 1.5m	INL G-1 SPE	300mm PRC FLARED END SECTION
F & G	DIAGONAL	DIAGONAL	TY 1 CL	TY 1 CL	DIAGONAL	DIAGONAL	TY 1 CL	DIAGONAL	DIAGONAL	DIAGONAL	DIAGONAL	
CONTROL EL.	141.596	141.769	142.200	142.450	141.986	141.999	142.249	142.600	142.530	141.634	142.078	142.565
INV NW.	140.536	-	140.980	141.410	-	-	-	141.420	-	138.653	138.766	139.650
INV SE.	140.560	-	141.150	-	-	-	-	-	141.630	138.653	138.766	-
INV NE.	140.560	-	141.150	141.410	-	-	-	-	-	-	-	-
INV SW.	-	141.000	-	141.410	-	141.218	-	-	141.620	-	-	-
INV N.	-	-	141.110	-	-	-	-	-	-	-	-	-
INV S.	-	-	-	-	141.120	-	-	-	-	-	-	-
INV E.	-	-	-	-	-	-	-	-	-	-	-	-
INV W.	-	-	-	-	-	-	-	-	-	-	-	-
REMARKS	BUILD OVER EXIST PIPE	-	-	-	-	-	-	-	BUILD OVER EXIST PIPE	BUILD OVER EXIST PIPE	-	-



MATCH LINE STA. 3+650

MATCH LINE STA. 3+500

EXISTING	PROPOSED	
○	●	CATCH BASIN
○	○	INLET
△	△	MANHOLE
△	△	CONC END SECTION
↘	↘	SAG
↗	↗	SUMMIT
↔	↔	DITCH
↔	↔	SWALE
→	→	SANITARY SEWER
→	→	STORM SEWER
→	→	CULVERT PIPE
→	→	TRENCH DRAIN
△		STRUCTURE NUMBER
○		STORM SEWER PIPE NUMBER

PIPE NO.	112	112b	113	113a	113b	113c	114a	114b	115	117
U/S-D/S	EXIST - 143	143a - 143	144 - EXIST.	EXIST - 144	145a - 144a	145 - 144	144a - 144	146 - 144a	147 - 146	150 - 151
LENGTH (m)	6.0	31.7	3.1	5.5	2.4	3.1	29.6	30.1	2.3	8.3
SIZE (mm)	675	300	750	600	300	450	300	300	300	300
CLASS/TYPE	A/1	A/1	A/1	A/2	A/1	A/1	A/1	A/2	A/1	A/2
T.B. (cu m)	0.5	8.6	0.7	-	0.4	0.4	-	-	0.4	2.4
REMARKS	CONC. COLLAR		CONC. COLLAR	CONC. COLLAR						

NAME	DATE

PROPOSED IMPROVEMENT
 ILLINOIS DEPARTMENT OF TRANSPORTATION
 DRAINAGE AND UTILITY PLAN
 MAIN STREET
 STA 3+500 to 3+650
 DATE 12/20/04
 DRAWN BY JAM
 CHECKED BY MJS

