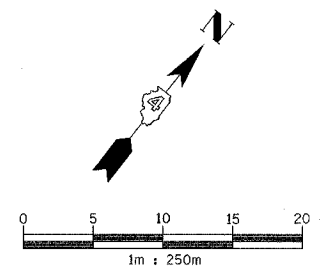


F.A.I. RTE.	SECTION	COUNTY	TOTAL SHEETS	SHEET NO.
74	*	TAZEWELL	1366	292
STA. 3+800.000		TO STA. 3+950.000		
FED. ROAD DIST. NO. 4		ILLINOIS FED. AID PROJECT		
* (90-11)R-2,90(13,14,14-1)R-1				

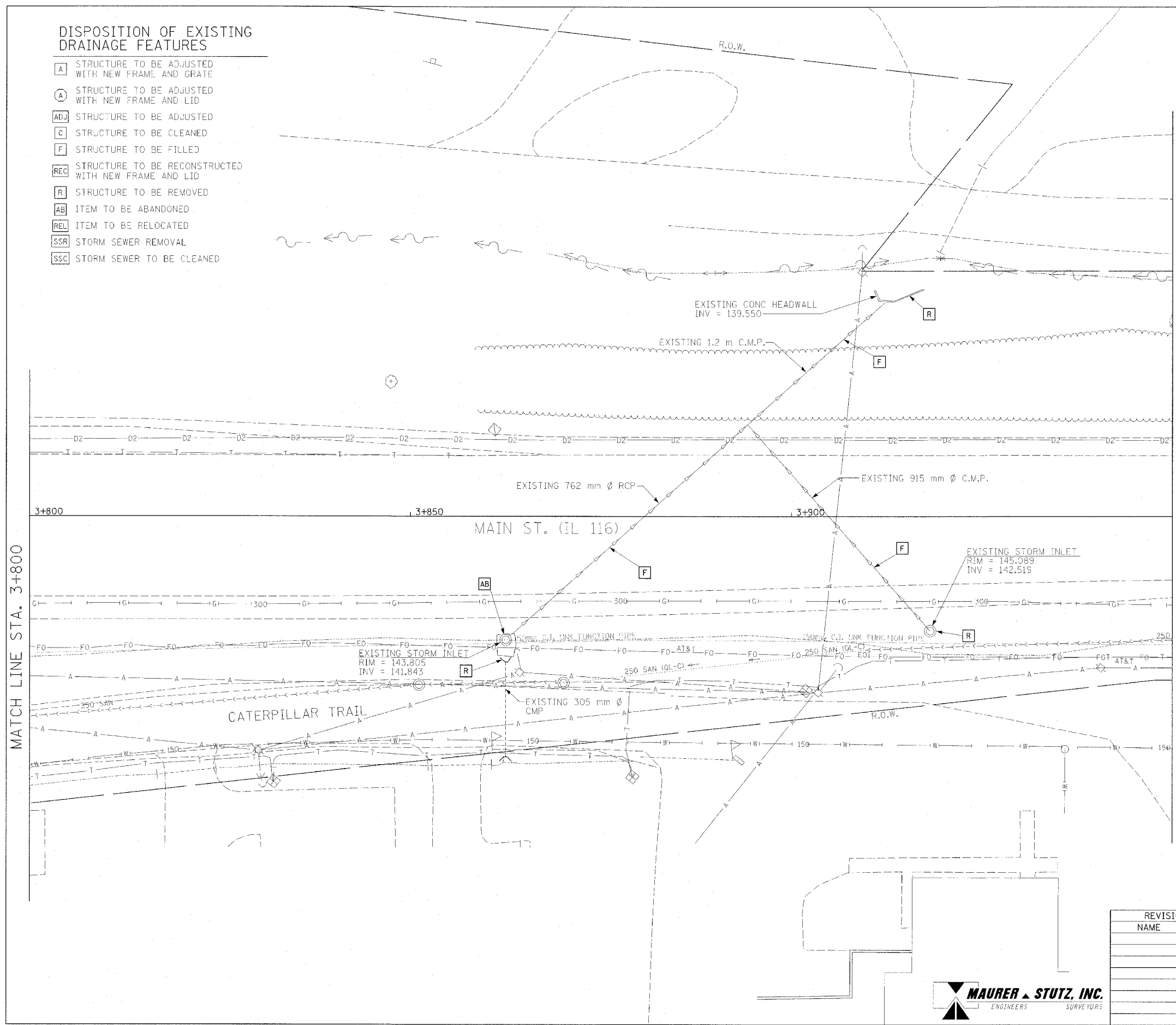


DISPOSITION OF EXISTING DRAINAGE FEATURES

- A STRUCTURE TO BE ADJUSTED WITH NEW FRAME AND GRATE
- A STRUCTURE TO BE ADJUSTED WITH NEW FRAME AND LID
- ADJ STRUCTURE TO BE ADJUSTED
- C STRUCTURE TO BE CLEANED
- F STRUCTURE TO BE FILLED
- REC STRUCTURE TO BE RECONSTRUCTED WITH NEW FRAME AND LID
- R STRUCTURE TO BE REMOVED
- AB ITEM TO BE ABANDONED
- REL ITEM TO BE RELOCATED
- SSR STORM SEWER REMOVAL
- SSC STORM SEWER TO BE CLEANED

EXISTING DRAINAGE AND UTILITY LEGEND

- OVERHEAD ELECTRIC
- STORM SEWER
- SANITARY SEWER
- CULVERT PIPE
- TRENCH DRAIN
- UNDERGROUND TELEPHONE
- UNDERGROUND FIBER OPTIC
- UNDERGROUND COMMUNICATIONS DUCT
- UNDERGROUND WATER MAIN
- UNDERGROUND GAS MAIN
- HEADWALL
- INLET
- CONC END SECTION
- UTILITY MANHOLE
- ELECTRIC/TELEPHONE SPLICE BOX
- TRAFFIC SIGNAL HANDHOLE
- POWER POLE
- TELEPHONE POLE
- HIGH MAST LIGHT
- ABOVE GROUND TRANSFORMER
- WATER VALVE OR UTIL. BOX
- FIRE HYDRANT
- RAILROAD SWITCH
- RAILROAD SIGNAL
- FIBER OPTIC JUNCTION BOX



MATCH LINE STA. 3+950

MATCH LINE STA. 3+800

EXISTING CONDITIONS

REVISIONS		ILLINOIS DEPARTMENT OF TRANSPORTATION DRAINAGE AND UTILITY PLAN MAIN STREET STA 3+800 TO 3+950
NAME	DATE	
		DRAWN BY JAM CHECKED BY MJS DATE 12/20/04

