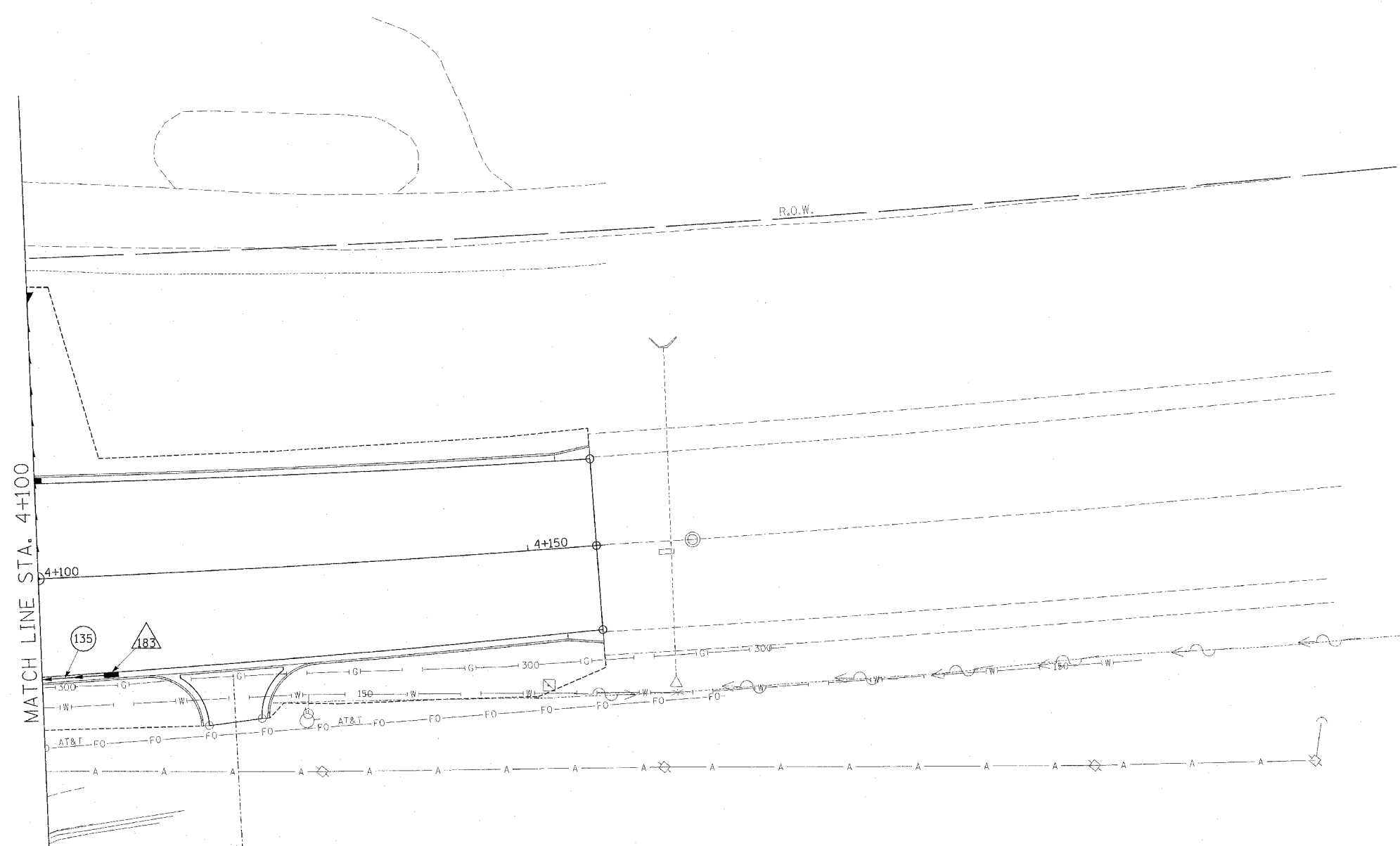
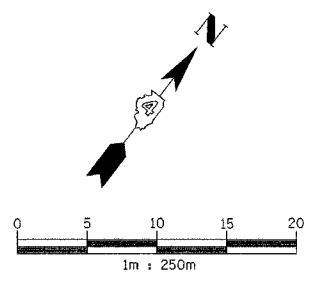


F.A.I. RTE.	SECTION	COUNTY	TOTAL SHEETS	SHEET NO.
74	*	TAZEWELL	1366	297
STA. 4+100.000		TO STA. 4+156.000		
FED. ROAD DIST. NO. 4		ILLINOIS FED. AID PROJECT		
* (90-11R-2;9013,14,14-1R-1				



DRAINAGE LEGEND

EXISTING	PROPOSED	
○	●	CATCH BASIN
□	■	INLET
○ with cross	○ with cross	MANHOLE
△	▲	CONC END SECTION
↕	↕	SAG
↔	↔	SUMMIT
↔	↔	DITCH
↔	↔	SWALE
→	→	SANITARY SEWER
→	→	STORM SEWER
→	→	CULVERT PIPE
→	→	TRENCH DRAIN
△ with number		STRUCTURE NUMBER
○ with number		STORM SEWER PIPE NUMBER

STRUCTURE SCHEDULE

STRUCTURE NO.	183
STATION	4+107.000
OFFSET	9.782 R
TYPE	INL G-1 SPECIAL
F & G	DIAGONAL
RIM EL.	147.488
INV NW.	-
INV SE.	-
INV NE.	-
INV SW.	146.540
INV N.	-
INV S.	-
INV E.	-
INV W.	-
REMARKS	-

PIPE SCHEDULE

PIPE NO.	135
U/S-D/S	183 - 179
LENGTH (m)	10.1
SIZE (mm)	300
CLASS/TYPE	A/1
T.B. (cu m)	3.4
REMARKS	

PROPOSED IMPROVEMENT

ILLINOIS DEPARTMENT OF TRANSPORTATION
DRAINAGE AND UTILITY PLAN
MAIN STREET
 STA 4+100 TO 4+156

REVISIONS	
NAME	DATE

DATE 12/20/04

DRAWN BY JAM
 CHECKED BY MJS

