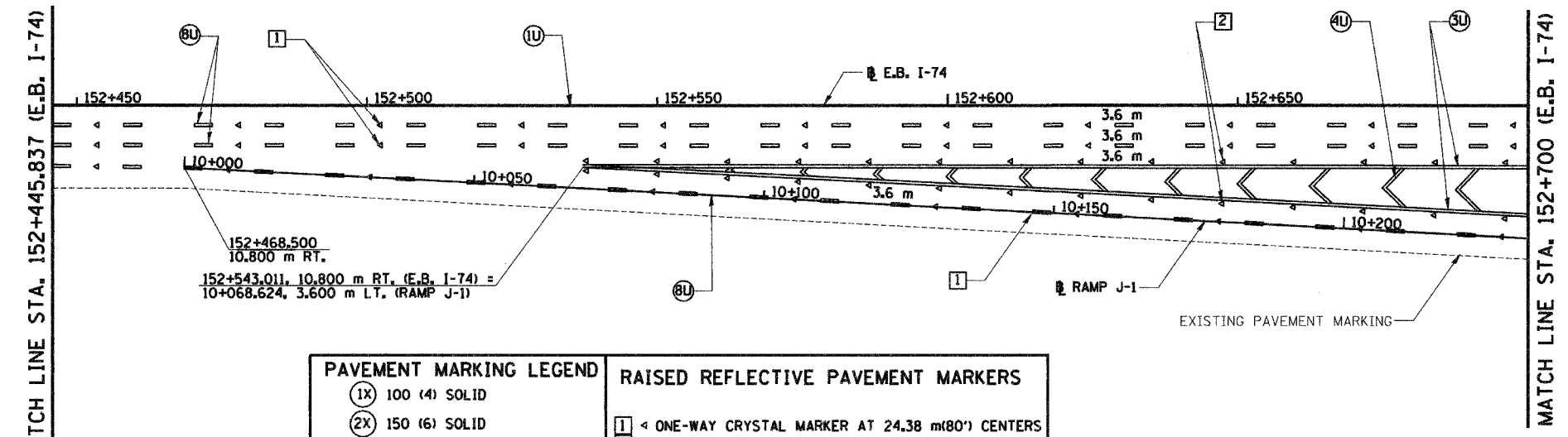
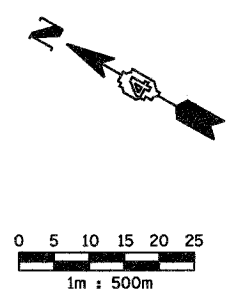
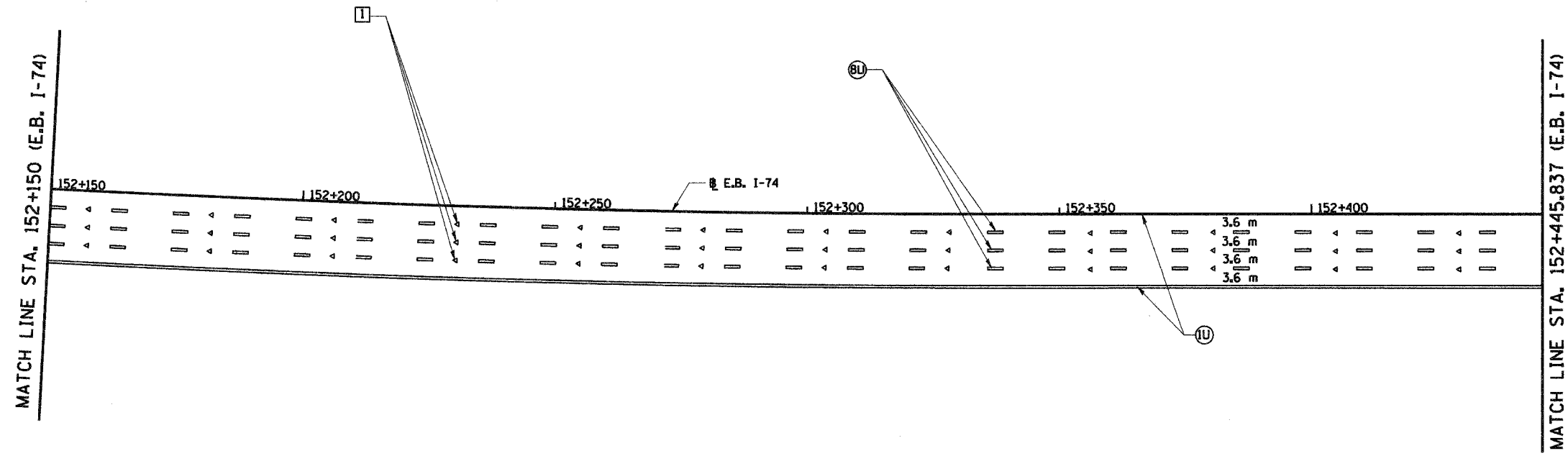


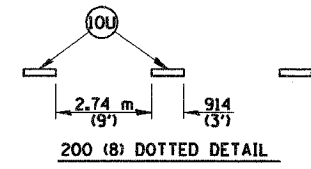
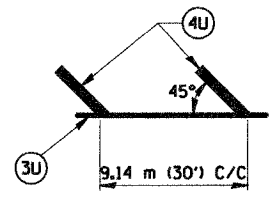
F.A.I. RTE.	SECTION	COUNTY	TOTAL SHEETS	SHEET NO.
74	(90-UR-29003,14+1R-1)	TAZEWELL	1366	329
STA. 152+150.000		TO STA. 152+700.000		
FED. ROAD DIST. NO. 4		ILLINOIS FED. AID PROJECT		



152+468.500
10.800 m RT.
152+543.011, 10.800 m RT. (E.B. I-74) =
10+068.624, 3.600 m LT. (RAMP J-1)

PAVEMENT MARKING LEGEND		RAISED REFLECTIVE PAVEMENT MARKERS	
(1X)	100 (4) SOLID	1	◀ ONE-WAY CRYSTAL MARKER AT 24.38 m(80') CENTERS
(2X)	150 (6) SOLID	2	◀ ONE-WAY CRYSTAL MARKER AT 12.19 m(40') CENTERS
(3X)	200 (8) SOLID	3	◀ ONE-WAY CRYSTAL MARKER AT 6.10 m(20') CENTERS
(4X)	300 (12) SOLID	4	◀ ONE-WAY AMBER MARKER AT 12.19 m(40') CENTERS
(5X)	600 (24) SOLID	5	▶ TWO-WAY AMBER MARKER AT 12.19 m(40') CENTERS FOR SPEEDS LESS THAN 45 MPH
(6X)	100 (4) DOUBLE SOLID	6	▶ TWO-WAY AMBER MARKER AT 24.38 m(80') CENTERS FOR SPEEDS GREATER THAN 45 MPH
(7X)	100 (4) SKIP DASH	WHERE "X" DESIGNATES:	
(8X)	150 (6) SKIP DASH	E	= EPOXY
(9X)	200 (8) SKIP DASH	P	= PAINT
(10X)	200 (8) DOTTED	T	= THERMOPLASTIC
(11X)	LETTERS AND ARROWS	U	= POLYUREA

All dimensions are in millimeters (inches) unless otherwise shown.



REVISIONS	
NAME	DATE

URS
URS CORPORATION
ST. LOUIS, MO

ILLINOIS DEPARTMENT OF TRANSPORTATION
PAVEMENT MARKING PLAN
EASTBOUND I-74
STA. 152+150.000 TO
STA. 152+700.000
DRAWN BY RLS
CHECKED BY SRS
DATE: 12-20-04

C:\Users\jwh11026\Saved\12-17-2004 12:00:16 PM

DATE: 12-20-04 TIME: 10:58 AM STIME: HERES
SDGN FILE NAME GOES HERE-SIZE IS LARGE ENOUGH FOR LONG FILE NAMES