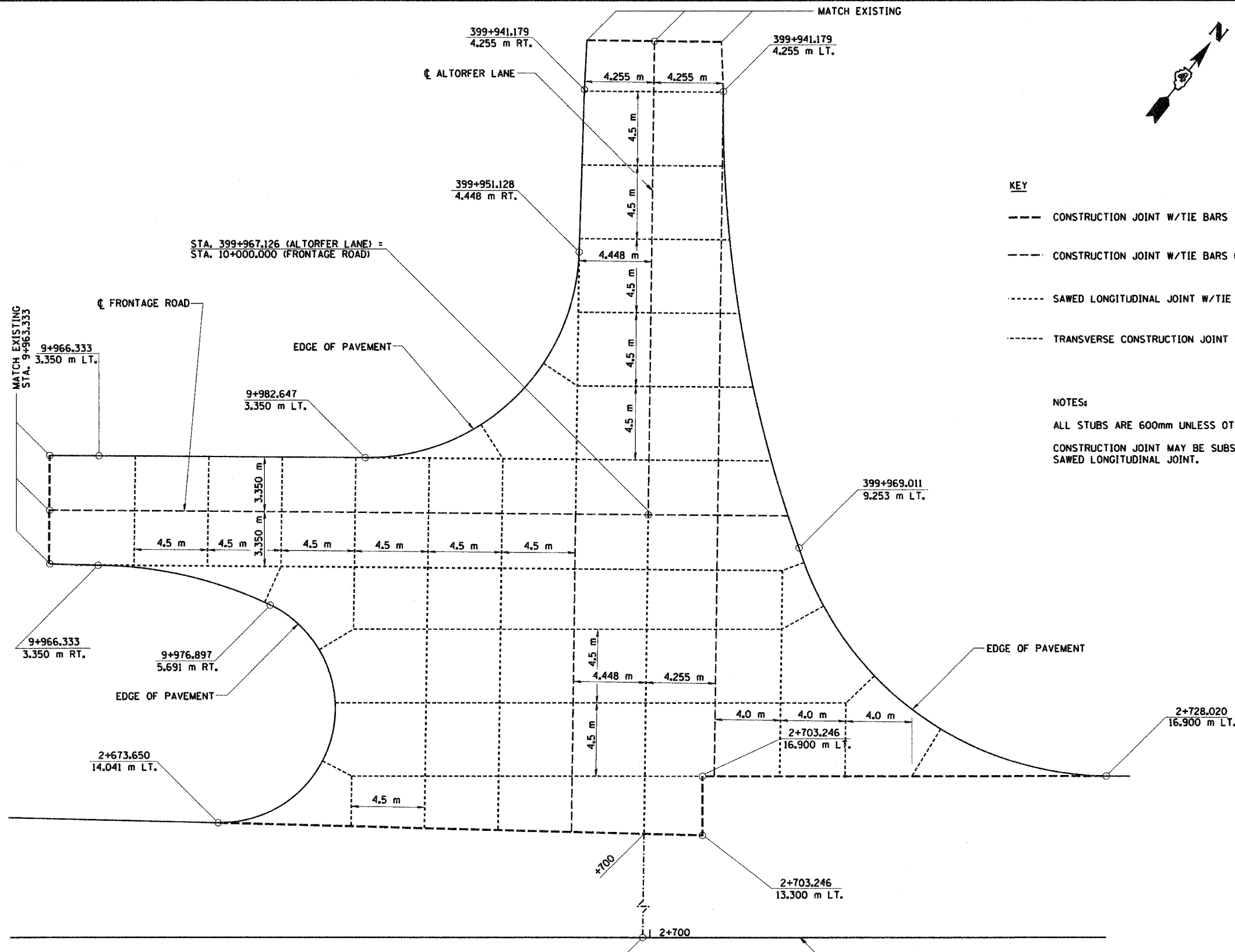
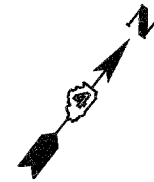


F.A.I. RTE.	SECTION	COUNTY	TOTAL SHEETS	SHEET NO.
74	*	TAZEWELL	1366	376
STA.		TO STA.		
FED. ROAD DIST. NO.		ILLINOIS FED. AID PROJECT		

\*(90-11R-2)90(3,4,14-11R-1



- CONSTRUCTION JOINT W/TIE BARS
- CONSTRUCTION JOINT W/TIE BARS GROUTED
- SAWED LONGITUDINAL JOINT W/TIE BARS
- TRANSVERSE CONSTRUCTION JOINT W/TIE BARS

**NOTES:**

ALL STUBS ARE 600mm UNLESS OTHERWISE NOTED.  
 CONSTRUCTION JOINT MAY BE SUBSTITUTED FOR SAWED LONGITUDINAL JOINT.

**PLAN VIEW**  
(SHOWING VERTICAL CONTROL)

REVISIONS	
NAME	DATE

ILLINOIS DEPARTMENT OF TRANSPORTATION

**PAVEMENT JOINT DETAIL  
 ALTORFER LANE  
 AT MAIN STREET**

DRAWN BY ACW  
 CHECKED BY JJM

DATE 12-20-04



I:\Projects\68201\Drawings\68201-11R-2\68201-11R-2.dwg