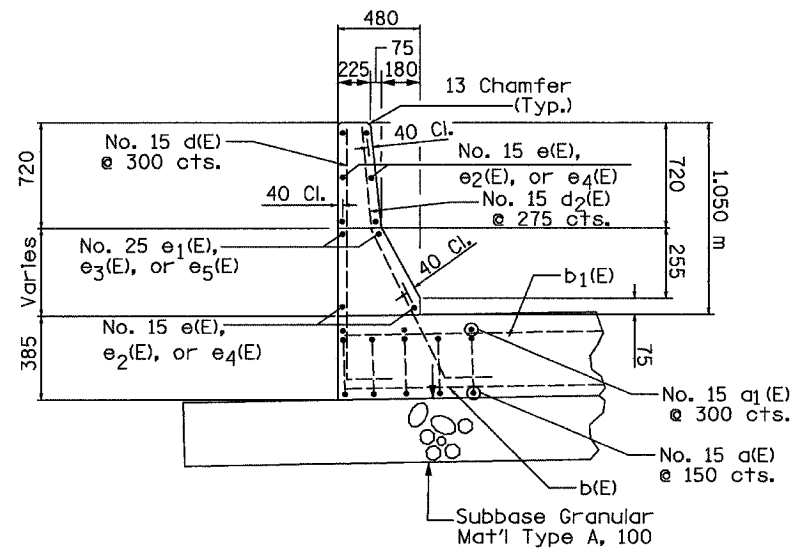
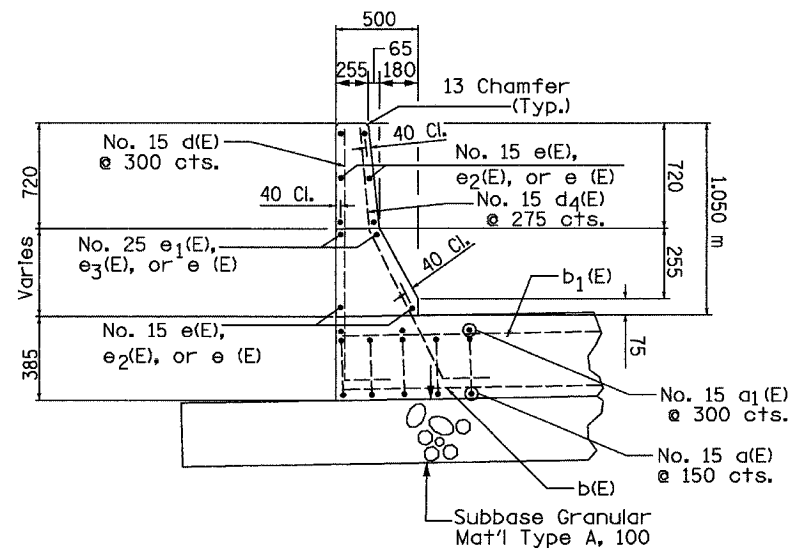


F.A.I. RTE.	SECTION	COUNTY	TOTAL SHEETS	SHEET NO.
74	90-10R-23003(14)-1R-1	TAZEWELL	1366	378
STA.	TO STA.			
FED. ROAD DIST. NO. 4		ILLINOIS	FED. AID PROJECT	

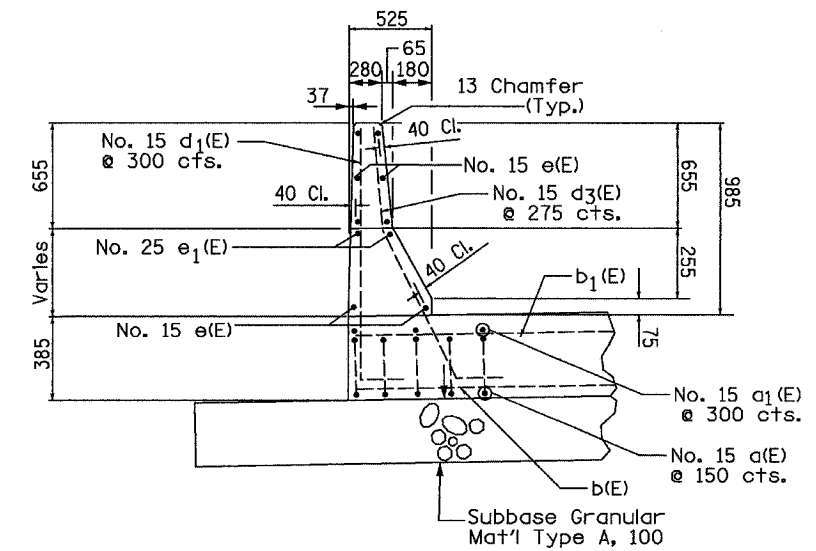


SECTION A-A



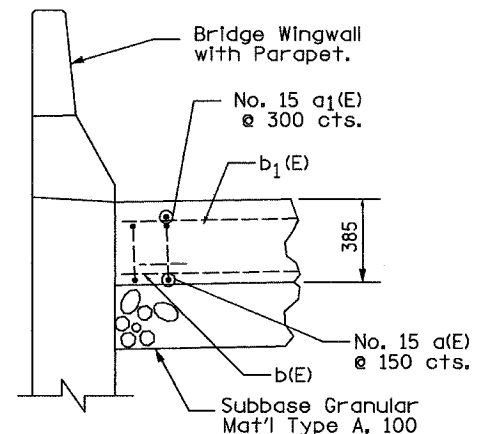
SECTION B-B

(At Back of Abutment or End of Wingwall)



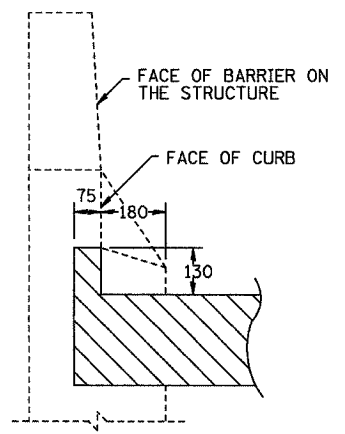
SECTION C-C

(At Back of Abutment)

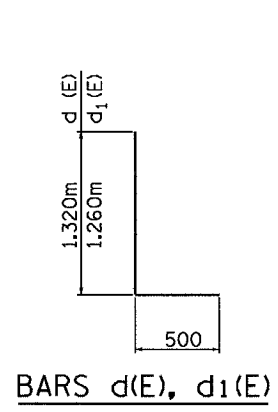


SECTION D-D

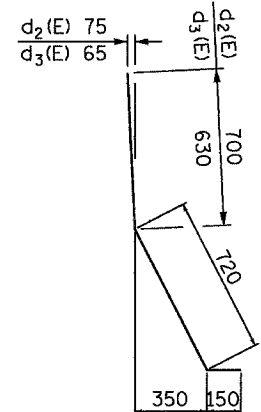
(At Back of Abutment)



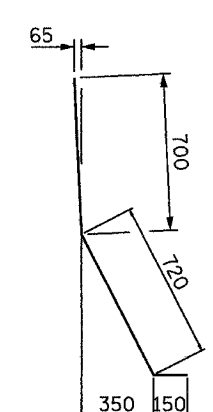
SECTION L-L



BARS d(E), d1(E)



BARS d2(E), d3(E)



BAR d4(E)

PARAPET BILL OF MATERIAL
(TYPICAL TRANSITION SECT. A-A TO C-C
SLABS 3, 5, & 9)

BAR	NO.	SIZE	LENGTH	SHAPE
d(E)	15	15	1.82	┘
d1(E)	15	15	1.76	┘
d2(E)	17	15	1.57	┘
d3(E)	16	15	1.50	┘
e(E)	8	15	8.90	—
e1(E)	2	25	8.90	—
REINFORCEMENT BARS (EPOXY COATED)			kg	320
CONCRETE SUPERSTRUCTURE			m ³	3.0

The Bill of Material above is for information ONLY. Cost is Included in Approach Pavement (Special).

*PARAPET BILL OF MATERIAL
(TYPICAL TRANSITION SECT. A-A TO B-B
SLABS 1 & 2)

BAR	NO.	SIZE	LENGTH	SHAPE
d(E)	30	15	1.82	┘
d2(E)	17	15	1.57	┘
d4(E)	16	15	1.57	┘
e2(E)	8	15	8.90	—
e3(E)	2	25	8.90	—
REINFORCEMENT BARS (EPOXY COATED)			kg	350
CONCRETE SUPERSTRUCTURE			m ³	2.9

*PARAPET BILL OF MATERIAL
(TYPICAL TRANSITION SECT. A-A TO B-B
SLAB 4)

BAR	NO.	SIZE	LENGTH	SHAPE
d(E)	12	15	1.82	┘
d2(E)	7	15	1.57	┘
d4(E)	7	15	1.57	┘
e4(E)	8	15	3.67	—
e5(E)	2	25	3.67	—
REINFORCEMENT BARS (EPOXY COATED)			kg	150
CONCRETE SUPERSTRUCTURE			m ³	1.3

*PARAPET BILL OF MATERIAL
(TYPICAL TRANSITION SECT. A-A TO B-B
SLABS 7 & 8)

BAR	NO.	SIZE	LENGTH	SHAPE
d(E)	21	15	1.82	┘
d2(E)	11	15	1.57	┘
d4(E)	11	15	1.57	┘
e(E)	8	15	5.92	—
e1(E)	2	25	5.92	—
REINFORCEMENT BARS (EPOXY COATED)			kg	240
CONCRETE SUPERSTRUCTURE			m ³	2.0

*The Bill of Material is for information ONLY. Cost is Included in Single Face Concrete Barrier (Modified).

REVISIONS		ILLINOIS DEPARTMENT OF TRANSPORTATION
NAME	DATE	
		<p style="text-align: center;">BRIDGE APPROACH PAVEMENT DETAILS</p> <p>DATE 12-20-04</p> <p>DRAWN BY TMM CHECKED BY ACW</p>



Date: 12-20-04 12:20:32 PM

DATE: 12-20-04 12:20:32 PM