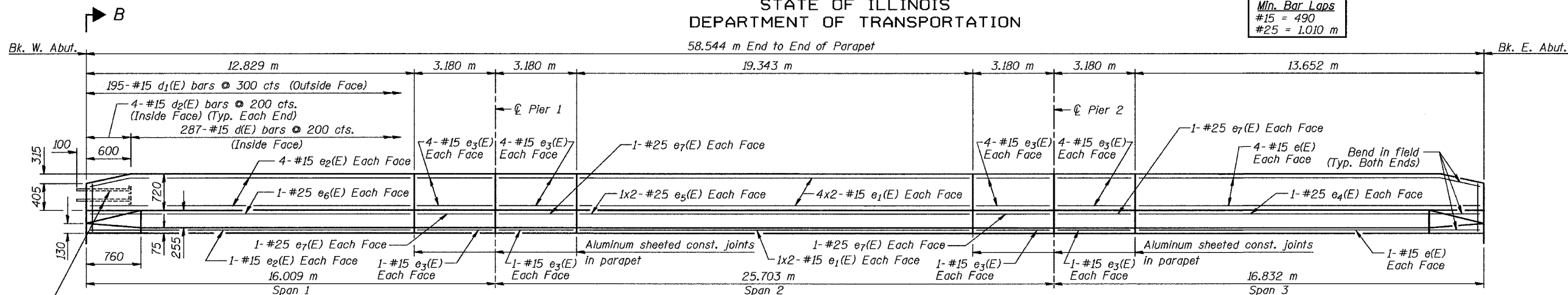


STATE OF ILLINOIS
DEPARTMENT OF TRANSPORTATION

Min. Bar Laps
#15 = 490
#25 = 1.010 m

ROUTE NO.	SECTION	COUNTY	TOTAL SHEETS	SHEET NO.
F.A.I. 74	90-11VB	TAZEWELL	1366	399
FED. ROAD DIST. NO. 7		ILLINOIS	FED. AID PROJECT-	

58.544 m End to End of Parapet



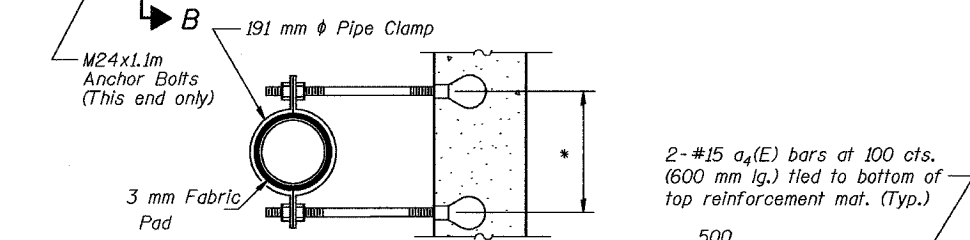
INSIDE ELEVATION OF NORTH PARAPET

(All dimensions along inside face of parapet)

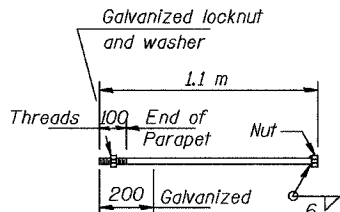
SUPERSTRUCTURE
BILL OF MATERIAL

Bar	No.	Size	Length (m)	Shape
a(E)	1196	#15	8.08	—
a1(E)	598	#15	6.22	—
a2(E)	598	#15	5.51	—
a3(E)	688	#20	1.20	—
a4(E)	56	#15	0.60	—
b(E)	744	#15	7.75	—
b1(E)	180	#20	11.79	—
b2(E)	504	#15	8.79	—
d(E)	287	#15	1.37	—
d1(E)	195	#15	1.77	—
d2(E)	8	#15	1.31	—
d3(E)	293	#15	1.60	—
d4(E)	195	#15	2.01	—
e(E)	20	#15	14.68	—
e1(E)	40	#15	9.80	—
e2(E)	20	#15	13.97	—
e3(E)	40	#15	3.17	—
e4(E)	4	#25	14.68	—
e5(E)	8	#25	10.06	—
e6(E)	4	#25	13.97	—
e7(E)	8	#25	3.17	—
e8(E)	20	#15	1.87	—
e9(E)	4	#25	1.87	—
ea(E)	20	#15	1.97	—
eb(E)	4	#25	1.97	—
m(E)	15	#20	8.72	—
m1(E)	24	#20	3.08	—
m2(E)	5	#20	1.21	—
m3(E)	12	#20	1.59	—
m4(E)	4	#20	0.63	—
m5(E)	20	#20	7.38	—
m6(E)	12	#20	3.18	—
m7(E)	5	#20	1.69	—
ma(E)	10	#20	1.33	—
m9(E)	24	#25	1.76	—
ma(E)	20	#15	1.71	—
mb(E)	48	#15	1.96	—
mc(E)	10	#20	1.55	—
md(E)	20	#15	1.92	—
s(E)	183	#15	1.77	—
s1(E)	144	#15	3.56	—
s2(E)	127	#15	3.53	—
v(E)	172	#15	1.09	—
Reinforcement Bars, Epoxy Coated		kg	58290	
Concrete Superstructure		m ³	436.9	
Bridge Deck Grooving		m ²	1457	
Protective Coat		m ²	1624	
Bar Splicers		Each	172	
Preformed Joint Seal, 64mm		Meter	58.5	

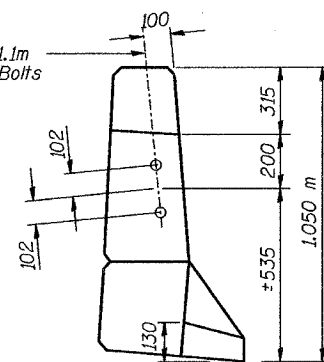
Reinforcement bars designated (E) shall be epoxy coated.



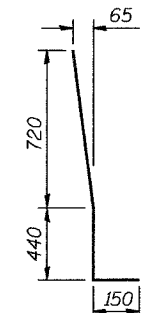
SECTION A-A



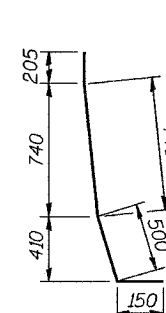
M24 ANCHOR BOLT
(Cost Included with Concrete Superstructure)



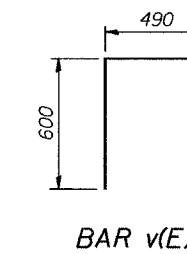
VIEW B-B



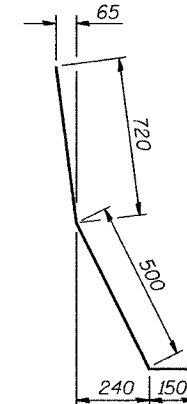
BAR d2(E)



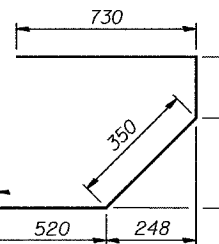
BAR d3(E)



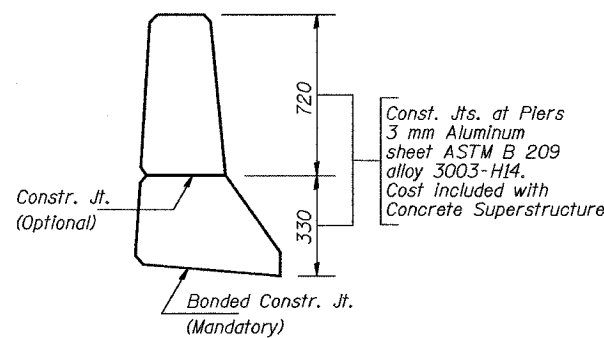
BAR v(E)



BAR d(E)

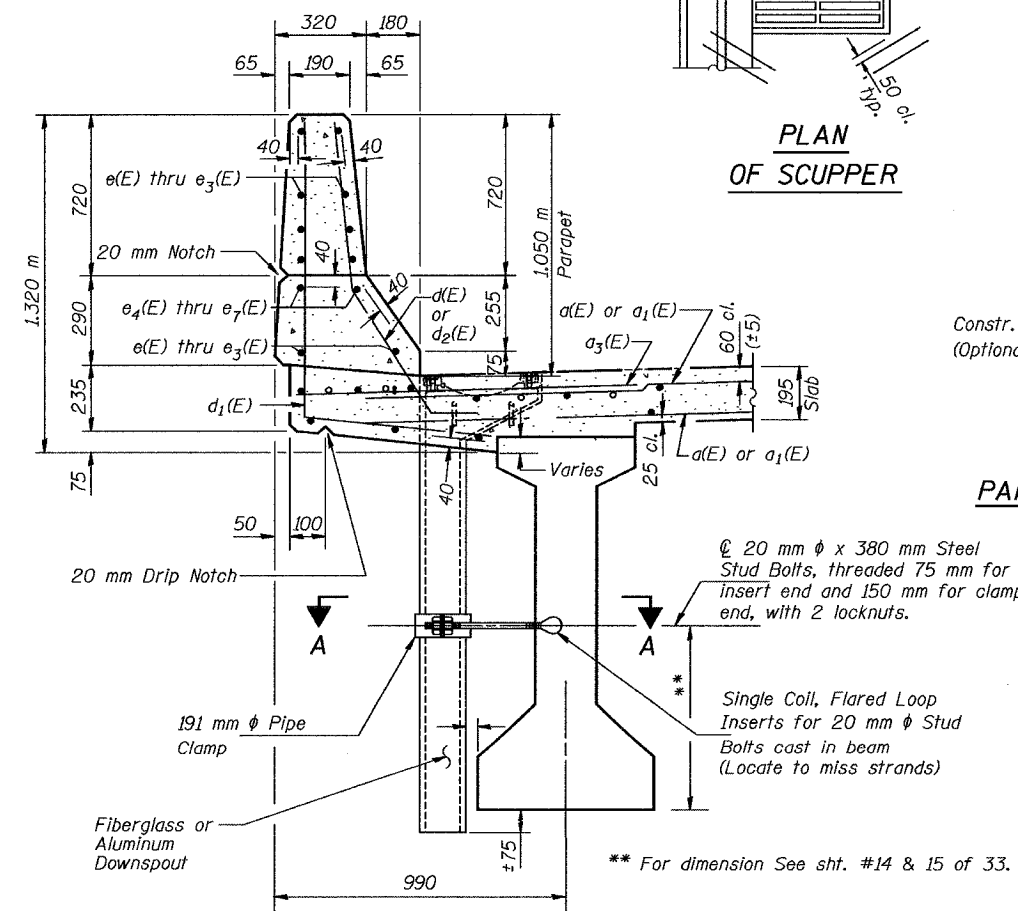


BAR s(E)



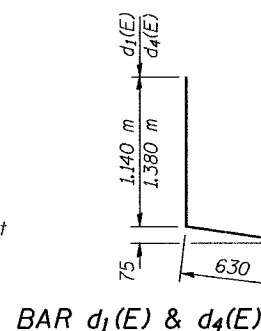
PARAPET JOINT DETAILS

Notes:
Fiberglass pipe shall conform to ASTM D2996, with short-time rupture strength hoop tensile stress of 200 MPa minimum. The surface of the Fiberglass pipe shall be free of bond inhibiting agents.
Aluminum tube alloy shall conform to ASTM 6061-T6.
The exterior surfaces of the floor drains shall be coated by the manufacturer with a pigment that matches the color of the concrete.
The clamping device and inserts shall be galvanized in accordance with AASHTO M 232. All dimensions are in millimeters (mm) except as noted.
Bars indicated thus 3x2-#15 etc. indicates 3 lines of bars with 2 lengths per line.



SECTION THRU PARAPET

Note: See Sheet 30 of 33 for details of drainage scuppers.



BAR d1(E) & d4(E)

Date	Designed	JLK	INTERSTATE 74 AND RAMPS J-4 OVER ALTORFER LANE AND TP&W R.R. F.A.I. RTE. 74 SECTION (90-11VB)BR TAZEWELL COUNTY STATION 152+685.353 STRUCTURE NO. 090-0159 (WB)	Sheet No. 11 of 33
Revisions	Drawn	KDK		
	Checked	RME		
	Approved	DLC		
Date: 7-21-04			URS Job No. 210001243.02	

