

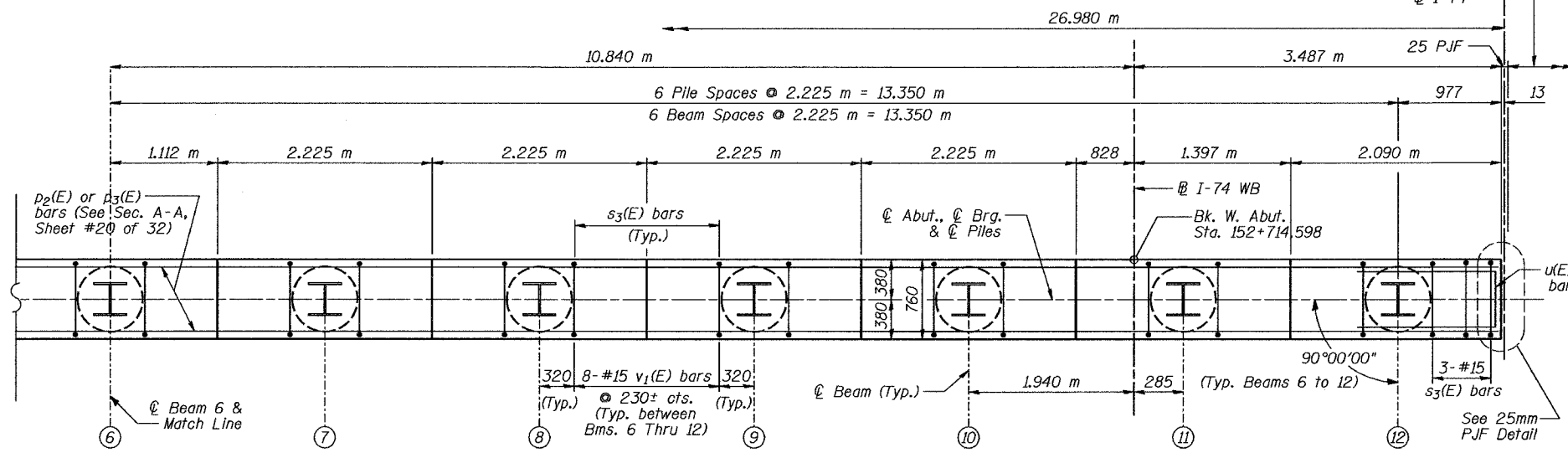
STATE OF ILLINOIS
DEPARTMENT OF TRANSPORTATION

EB Structure No. 090-158

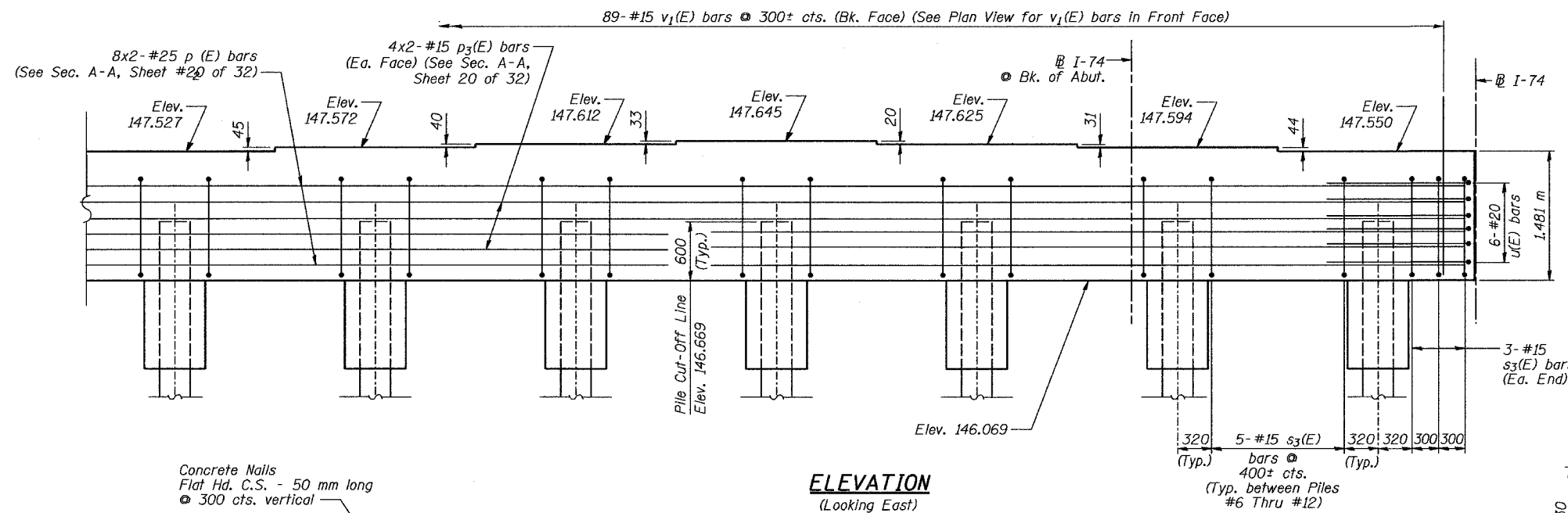
ROUTE NO.	SECTION	COUNTY	TOTAL SHEETS	SHEET NO.
F.A.I. 74	(90-11VB)BY	TAZEWELL	1366	407
FED. ROAD DIST. NO. 7		ILLINOIS	FED. AID PROJECT-	

**BILL OF MATERIAL
EAST ABUTMENT**

Bar	No.	Size	Length	Shape
h(E)	24	#15	3.38	—
p ₂ (E)	16	#25	14.36	—
p ₃ (E)	16	#15	13.88	—
s ₃ (E)	61	#15	3.86	□
u(E)	12	#20	2.85	—
v ₁ (E)	183	#15	2.18	—
v ₂ (E)	10	#15	4.07	—
Structure Excavation			m ³	80
Concrete Structures			m ³	30.4
Reinforcement Bars, Epoxy Coated			kg	2520
Furn. Steel Piles HP 310 x 125			meter	322.8
Driving Steel Piles			meter	322.8



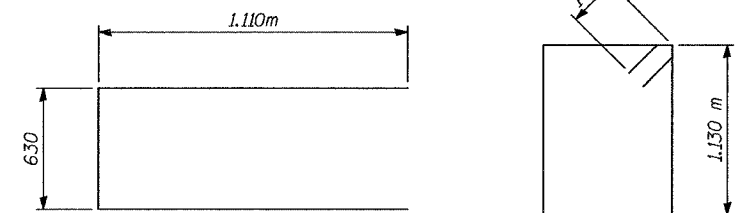
PLAN



ELEVATION
(Looking East)

Min. Bar. Lap

#15	640
#20	790
#25	1320

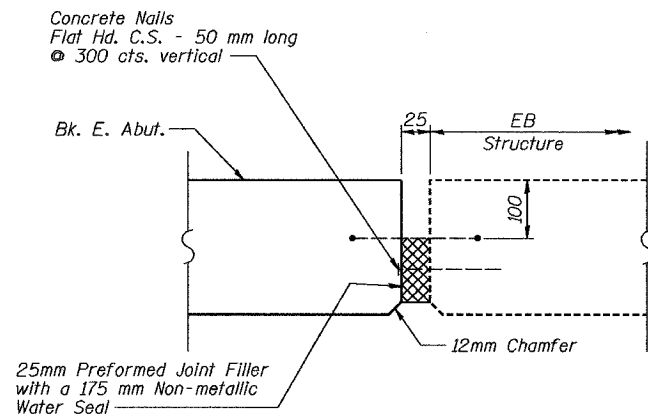


BAR u(E)

BAR s3(E)

PILE DATA

Type - HP310x125
Capacity - Driven to refusal
Est. Length - 26.9m
No. Req'd. - 12
Allow 650 KN/Pile for Negative Skin Friction



25mm PREFORMED JOINT FILLER DETAIL
(at Back of Abutment)

Notes: Work this Sheet with #20 of 33.
See Sheet #19 of 33 for pile encasement details.
See Sheet #4 of 33 for existing pile locations.
Pour steps monolithically with cap.
Bars indicated thus 4 x 3 - #20 etc. indicates 4 lines of bars with 3 lengths per line.
Reinforcement bars designated (E) shall be Epoxy Coated.
All dimensions are in millimeters (mm) except as noted.
All stations and elevations are in meters (m).
All edges shall have standard 20mm chamfers, except as noted.



Date		DESIGNED		EAST ABUTMENT		Sheet No.	
Revisions	Designed	JLK	INTERSTATE 74 AND RAMPS J-4 OVER ALTORFER LANE AND TP&W R.R. F.A.I. RTE. 74 SECTION (90-11VB)BR TAZEWELL COUNTY STATION 152+685.353 STRUCTURE NO. 090-0159 (WB)			21	
	Drawn	KDK				of 33	
	Checked	RME				URS Job No. 2100001243.02	
	Approved	DLC					
Date: 7-21-04							