

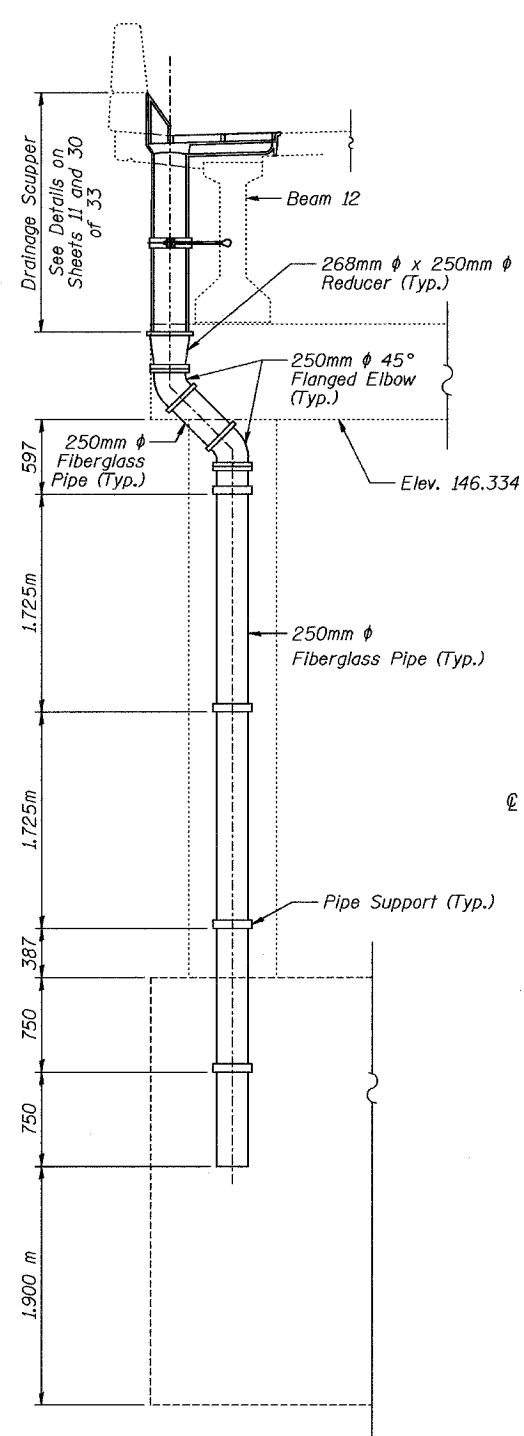
ROUTE NO.	SECTION	COUNTY	TOTAL SHEETS	SHEET NO.
F.A.I. 74	90-11VB1B	TAZEWELL	1366	415
FED. ROAD DIST. NO. 7 ILLINOIS			FED. AID PROJECT-	

STATE OF ILLINOIS
DEPARTMENT OF TRANSPORTATION

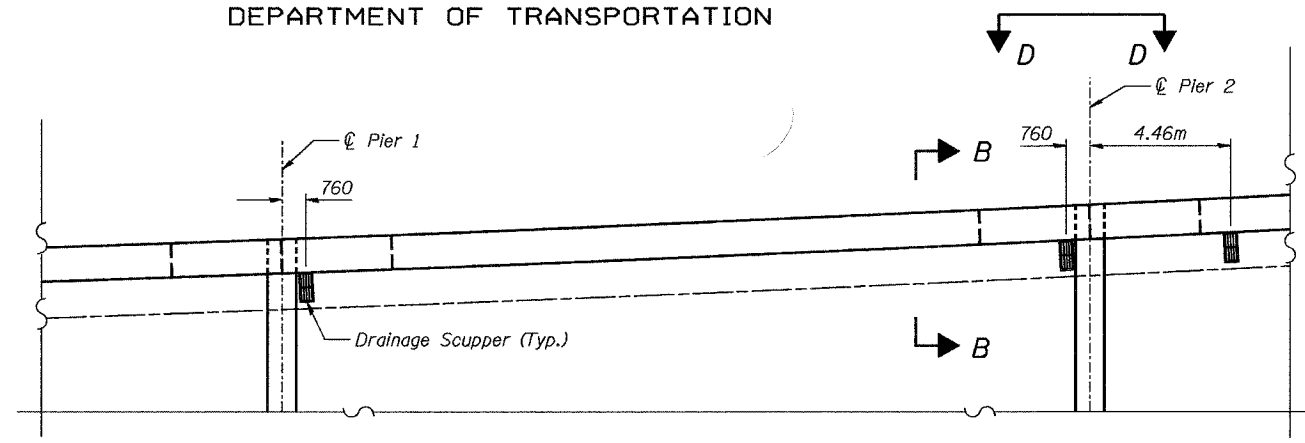
**BILL OF MATERIAL
PIER 2**

Bar	No.	Size	Length	Shape
h ₆ (E)	32	#20	8.67	—
h ₇ (E)	8	#15	10.02	—
h ₈ (E)	8	#15	7.83	—
h ₉ (E)	4	#15	6.60	—
h ₁₀ (E)	32	#20	8.23	—
h ₁₁ (E)	32	#20	8.75	—
p ₄ (E)	24	#25	13.69	—
s ₅ (E)	65	#15	1.75	□
s ₆ (E)	70	#15	3.48	□
u ₁ (E)	82	#20	3.39	□
v ₃ (E)	66	#25	1.26	—
v ₄ (E)	126	#15	3.30	—
Structure Excavation			m ³	119
Concrete Structures			m ³	106.6
Reinforcement Bars, Epoxy Coated			kg	5720
Furn. Steel Piles HP 360 x 174			m	327.6
Driving Steel Piles			meter	327.6

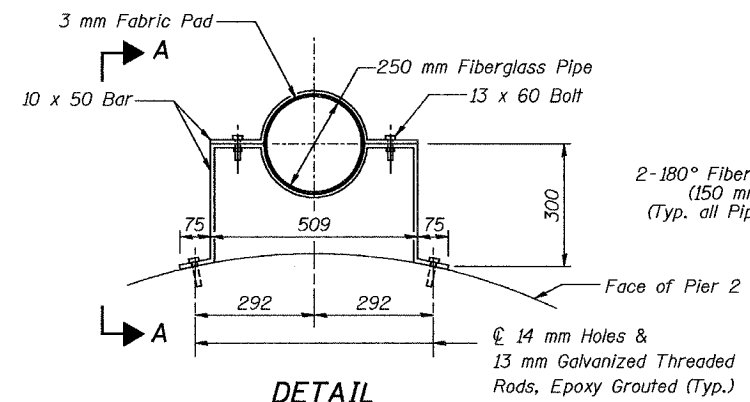
Reinforcement bars designated (E) shall be epoxy coated.



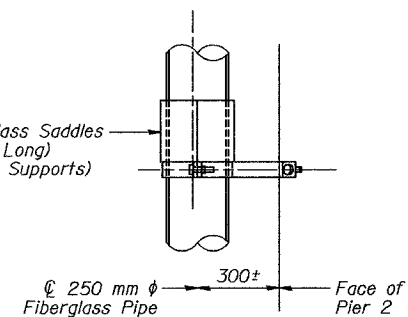
PIER 2
(Looking East)



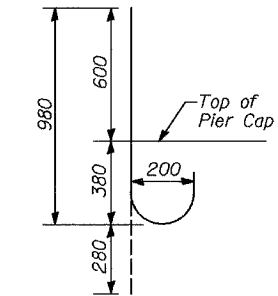
PLAN



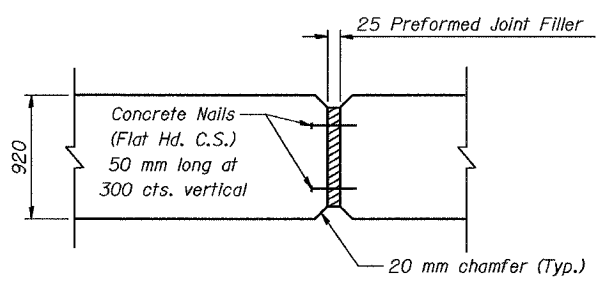
**DETAIL
PIPE SUPPORT AT PIERS**



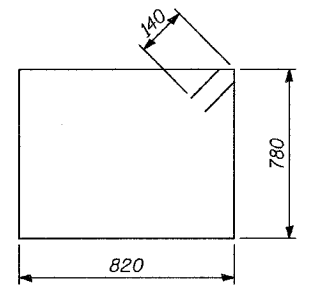
VIEW A-A



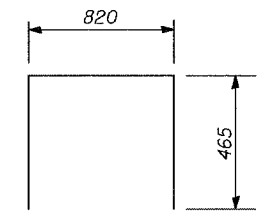
v₃(E) DOWEL BAR



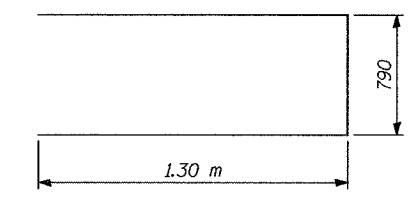
VIEW C-C



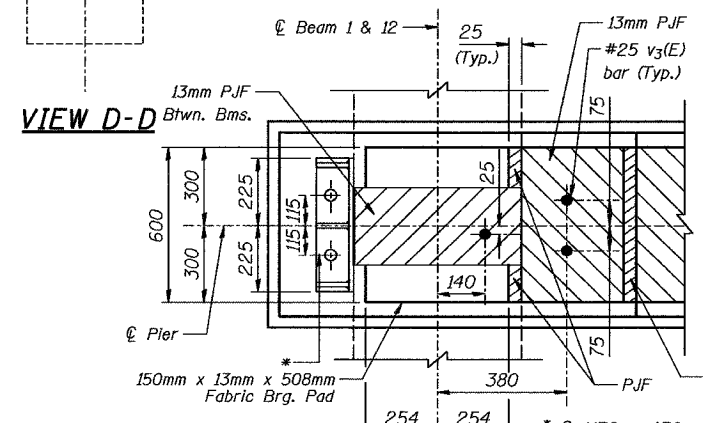
BAR s₆(E)



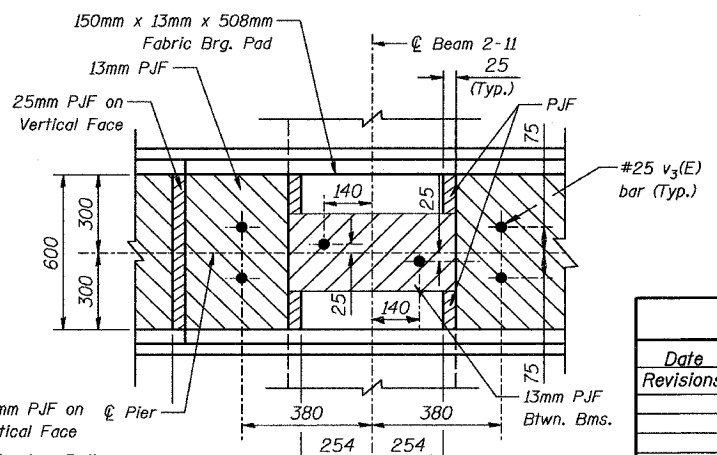
BAR s₅(E)



BAR u₁(E)



VIEW D-D



DETAIL 'B'
Typ. at Interior Bms.

DETAIL 'A'
Typ. at Exterior Bms.
* \varnothing M36 x 450 mm Anchor Bolts with 75 x 75 x 8 mm \varnothing washer under nut. Holes in cap to be drilled after beams are in place. Cost is included in Concrete Structures.

Notes:
Fiberglass pipe shall conform to ASTM D2996, with short-time rupture strength hoop tensile stress of 200 MPa minimum.
The surface of the Fiberglass pipe shall be free of bond inhibiting agents.
Bolts, nuts, rods, and washers for "Drainage System" shall conform to the requirements of ASTM A307.
The pay item "Drainage System" shall include providing and installing fiberglass pipe, tees, reducers, elbows, cleanouts, inserts, anchors, hangers, clamps, saddles and all other items necessary to complete the underdeck drainage system (See Special Provisions).
For Drainage Scupper Details See Sheet 11 & 30 of 33.
Locate anchors to miss reinforcement.
All dimensions are in millimeters (mm) except as noted.

Date	Designed	JML	PIER 2 DETAILS INTERSTATE 74 AND RAMPS J-4 OVER ALTORFER LANE AND TP&W R.R. F.A.I. RTE. 74 SECTION (90-11VB)BR TAZEWELL COUNTY STATION 152+685.353 STRUCTURE NO. 090-0159 (WB)	Sheet No.
Revisions	Drawn	KDK		27
	Checked	RME		of 33
	Approved	DLC		URS Job No.
				2100001243.02



Date: 7-21-04