

STATE OF ILLINOIS
DEPARTMENT OF TRANSPORTATION

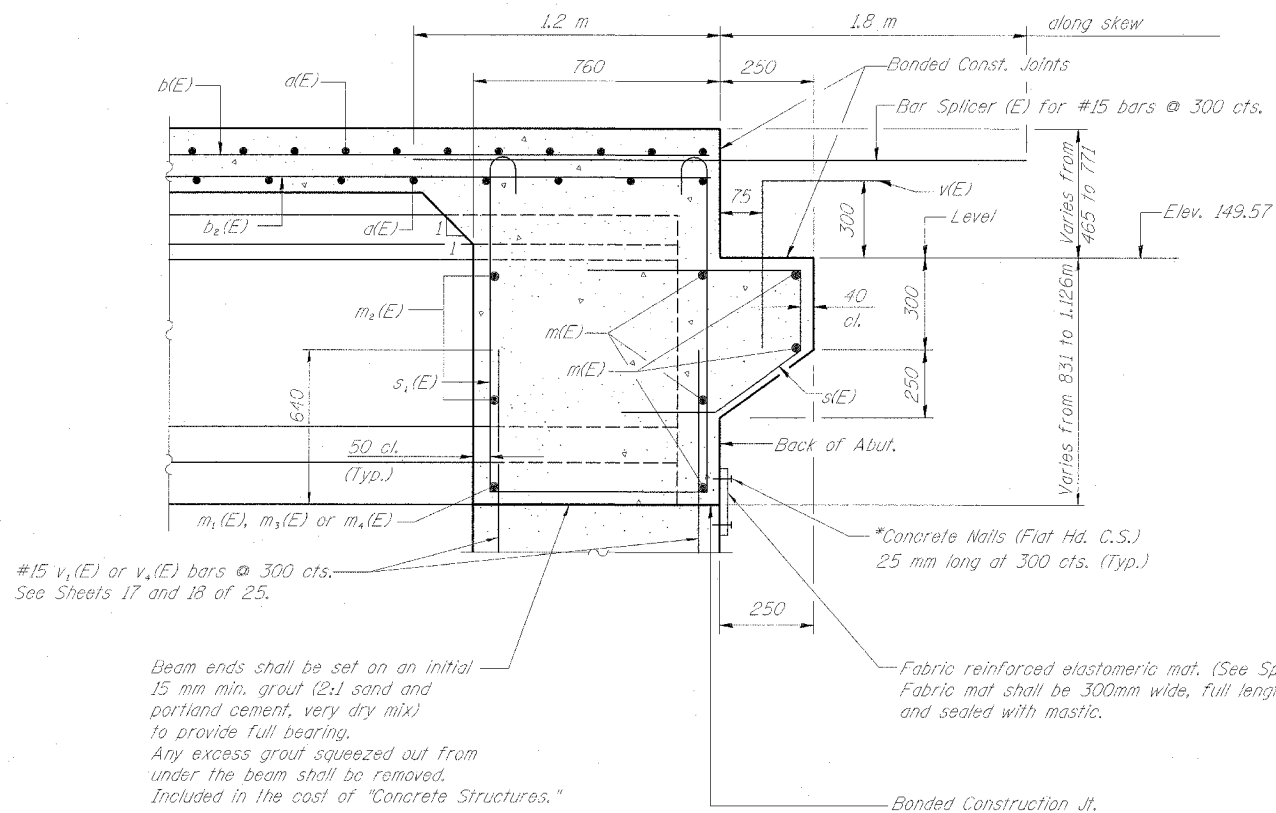
68201

ROUTE NO.	SECTION	COUNTY	TOTAL SHEETS	SHEET NO.
S. D. L. F. A. 1-74	*	TAZEWELL	1366	435
FED. ROAD DIST. NO. 7	ILLINOIS	FED. AID PROJECT-		

SHEET NO. 13

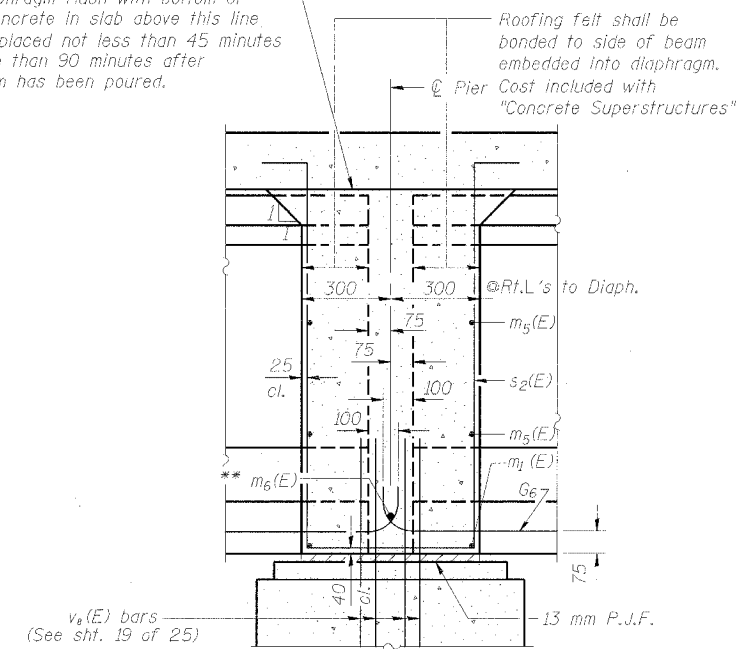
25 SHEETS

*(90-11HB)BR



Beam ends shall be set on an initial 15 mm min. grout (2:1 sand and portland cement, very dry mix) to provide full bearing. Any excess grout squeezed out from under the beam shall be removed. Included in the cost of "Concrete Structures."

Four diaphragm flush with bottom of slab. Concrete in slab above this line shall be placed not less than 45 minutes nor more than 90 minutes after diaphragm has been poured.

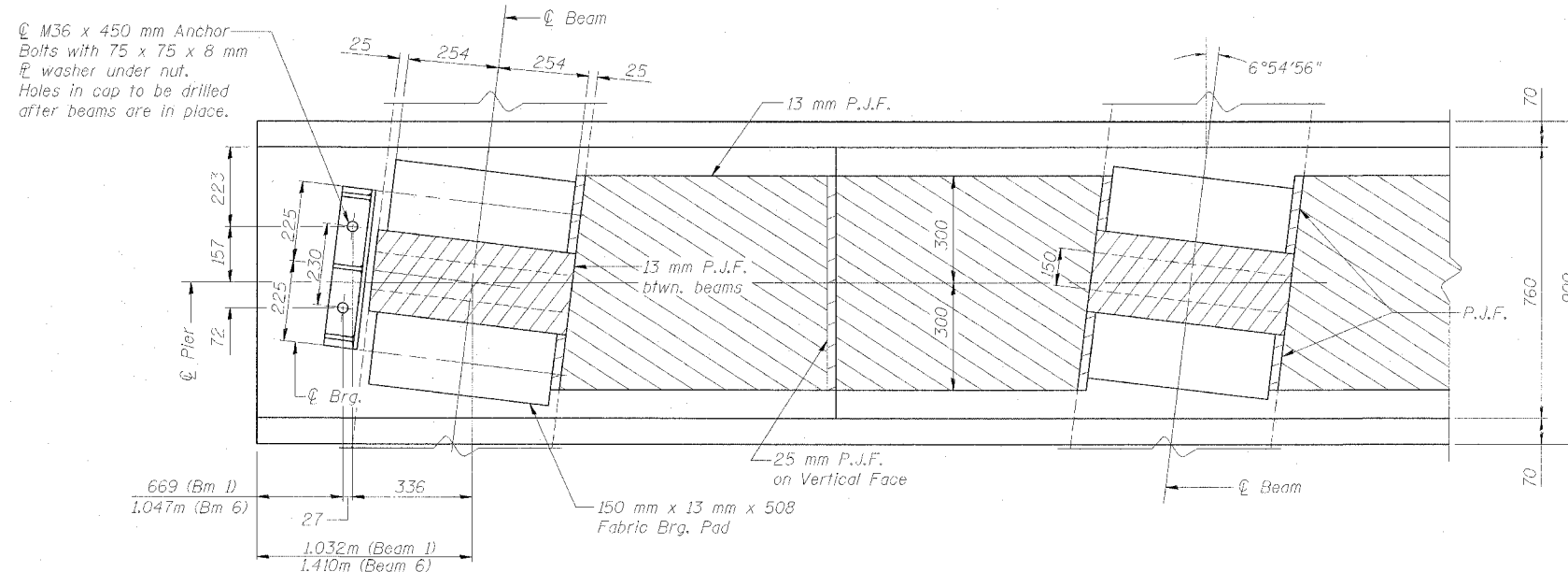


Note: Horizontal dimensions for Sec. B-B are along ϕ of beam unless otherwise noted.

SECTION B-B
AT PIER
(Fixed)

SECTION A-A

Dimensions at right angles to abutment, except as shown.
* Cost Included with "Concrete Structures"



PLAN AT PIER

(Showing Bearing Pad, P.J.F., and Anchor Bolt layout details)

Notes: Reinforcement bars in diaphragm are billed with superstructure on sheet 9 of 25. Concrete in diaphragm is included with Concrete Superstructure on sheet 19 of 25. For details of bars $s_1(E)$, $s_2(E)$ & $s_3(E)$ see sheet 9 of 25. The $s_1(E)$ and $s_2(E)$ bars shall be placed parallel to the beams. Spacing for these bars shall be at right angles to the beams. For anchor bolt details see sheet 20 of 25. All dimensions are in millimeters (mm) except as noted. For side retainer details see sheet 12 of 25.

DIAPHRAGM DETAILS
WB INTERSTATE 74 OVER
MAIN STREET (IL. RTE. 116)
F.A.I. ROUTE 74 - SEC. (90-11HB)BR
TAZEWELL COUNTY
STATION 153+050.716
STRUCTURE NO. 090-0160



DESIGNED	KEF
CHECKED	MJS
DRAWN	DEM
CHECKED	KEF