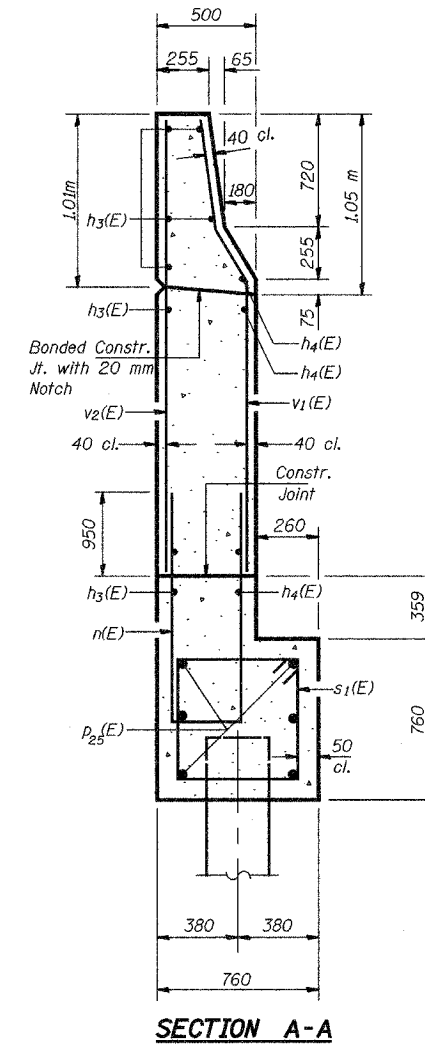
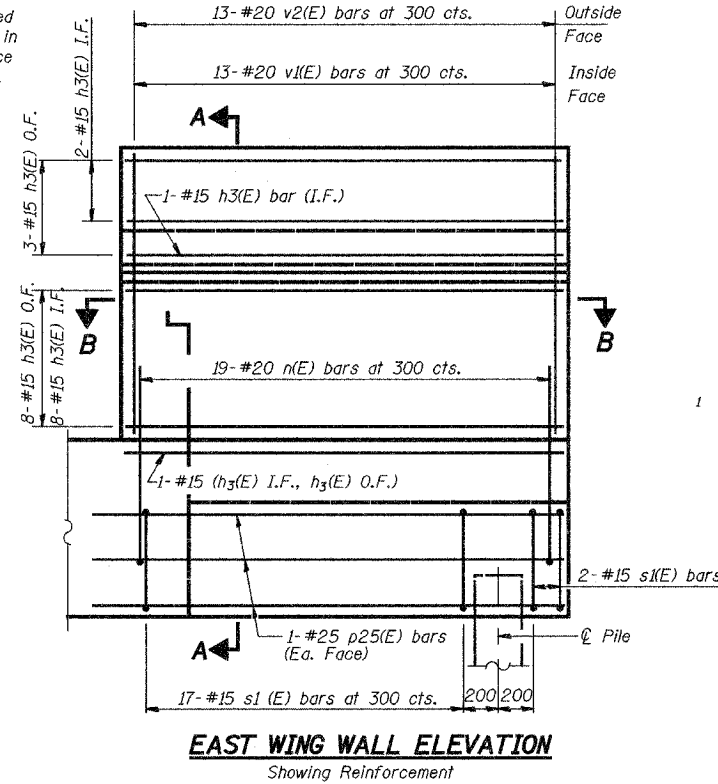
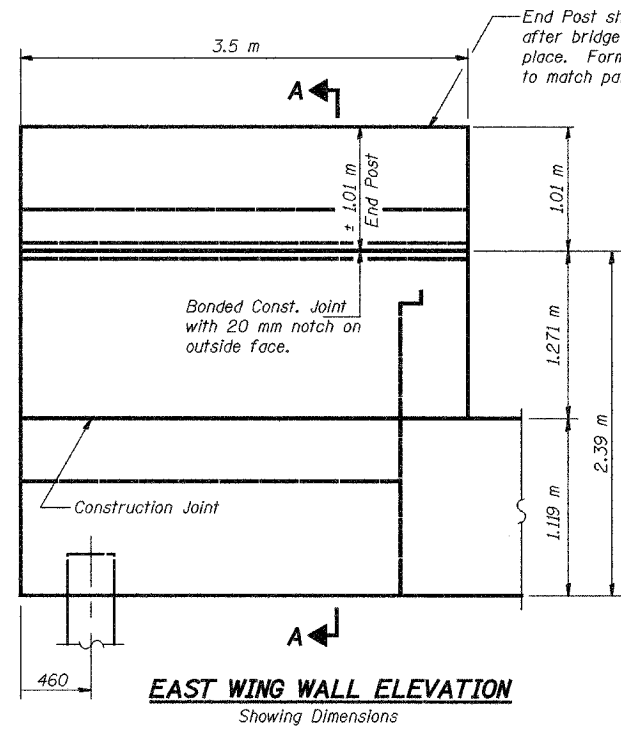


STATE OF ILLINOIS
DEPARTMENT OF TRANSPORTATION

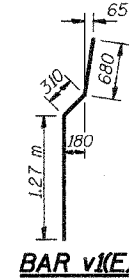
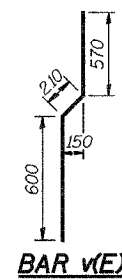
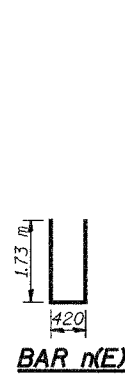
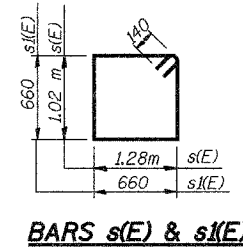
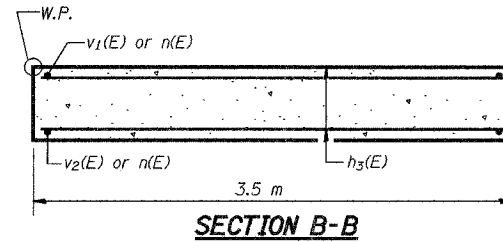
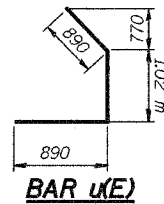
| ROUTE NO. | SECTION | COUNTY | TOTAL SHEETS | SHEET NO. |
|-----------------------|----------|-------------------|--------------|-----------|
| F.A.I. 74 | 90-13HVB | TAZEWELL | 1366 | 493 |
| FED. ROAD DIST. NO. 7 | ILLINOIS | FED. AID PROJECT- | | |

SHEET NO. 45
68 SHEETS



ABUTMENT
BILL OF MATERIAL

| Bar | No. | Size | Length (m) | Shape |
|----------------------------------|-----|----------------|------------|-------|
| d5(E) | 9 | #20 | 1.0 | |
| d6(E) | 84 | #20 | 1.03 | |
| h(E) | 12 | #20 | 7.8 | |
| h2(E) | 20 | #15 | 7.7 | |
| h3(E) | 24 | #15 | 3.4 | |
| h9(E) | 10 | #15 | 1.78 | |
| n(E) | 13 | #20 | 3.88 | |
| p1(E) | 9 | #25 | 3.33 | |
| p2(E) | 6 | #15 | 6.9 | |
| p25(E) | 6 | #25 | 4.2 | |
| s(E) | 11 | #15 | 4.88 | |
| s1(E) | 19 | #15 | 2.92 | |
| u(E) | 4 | #20 | 2.8 | |
| v(E) | 49 | #15 | 1.33 | |
| v1(E) | 13 | #20 | 2.26 | |
| v2(E) | 13 | #20 | 2.23 | |
| v4(E) | 49 | #20 | 1.1 | |
| v5(E) | 49 | #15 | 1.82 | |
| v7(E) | 42 | #20 | 1.6 | |
| v28(E) | 10 | #20 | 1.8 | |
| Structure Excavation | | m ³ | 36 | |
| Concrete Structures | | m ³ | 18 | |
| Reinforcement Bars, Epoxy Coated | | kg | 2,150 | |
| Furnishing Steel Piles HP310x79 | | m | 44 | |
| Driving Steel Piles HP310x79 | | m | 44 | |
| Test Pile Steel HP310x79 | | Each | 1 | |
| Bridge Seat Sealer | | m ² | 14.1 | |
| Bar Splicers | | Each | 49 | |



NOTES:

1. Work this Sheet with Sheets 43 and 44.
2. See Sheet 44 for Notes.
3. All dimensions are in millimeters (mm) except as noted.
4. Reinforcement bars designated (E) shall be epoxy coated.

NORTH ABUTMENT EXTENSION DETAILS

| | | | |
|---|--------------|---|---------------------------------|
| Date | Designed EV | WESTBOUND F.A.I. ROUTE 74 OVER CAMP STREET, FARM CREEK, AND TP&W RR F.A.I. RTE. 74 SECTION (90-13HVB)BY TAZEWELL COUNTY STATION 153+625.193 STRUCTURE NO. 090-0009 | Sheet No. 45 of 68 |
| Revisions | Drawn EV | | |
| | Checked NPP | | |
| | Approved NPP | | |
| Prepared By: BRW, Inc. A Division of URS | | 1701 Golf Rd., Suite 1000 Rolling Meadows, IL. | BRW Job No. 17049-071 |

A-1-D (M)
4-30-99