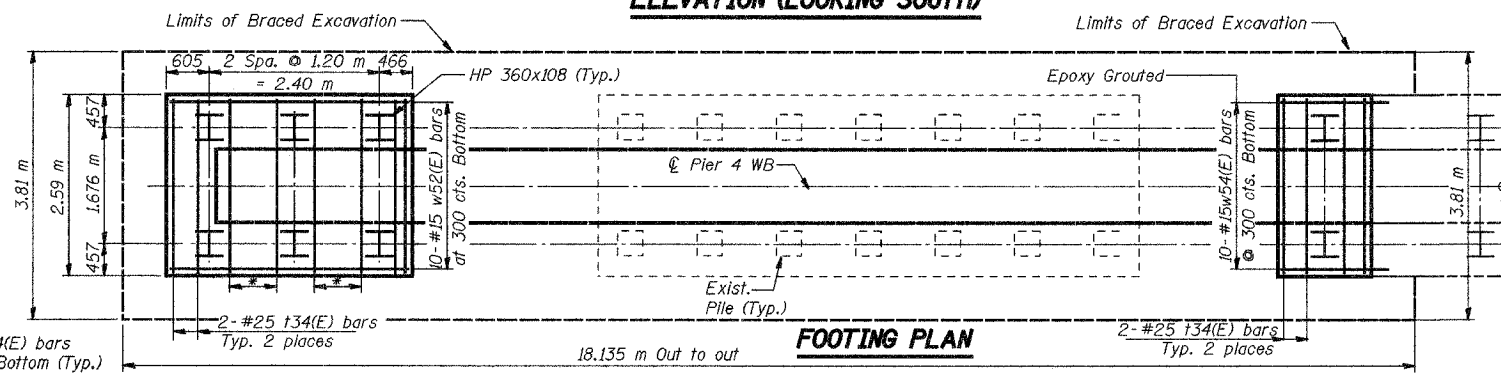
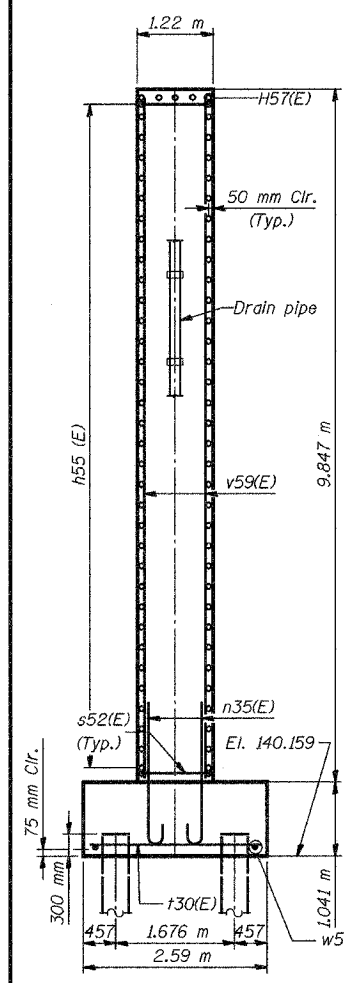
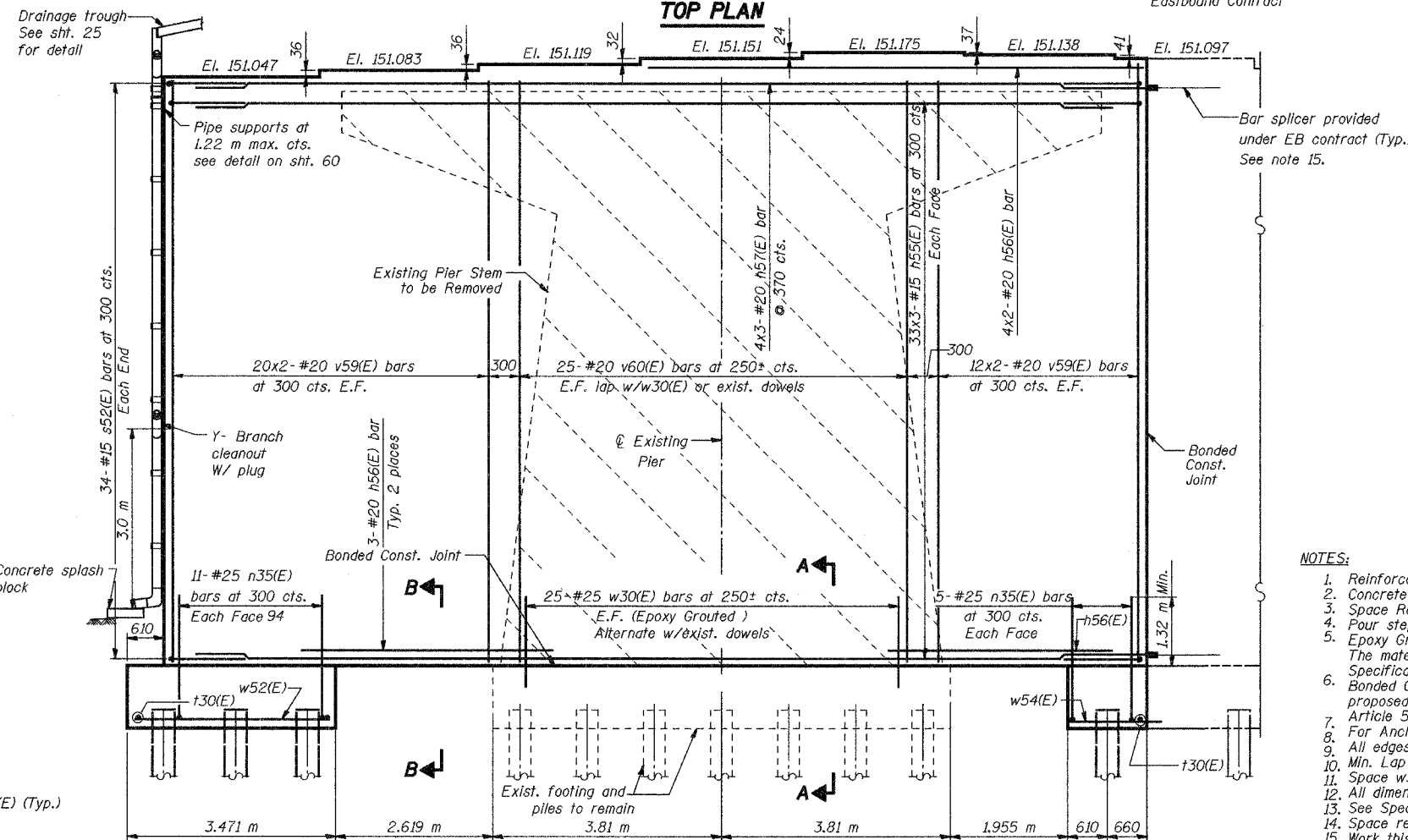
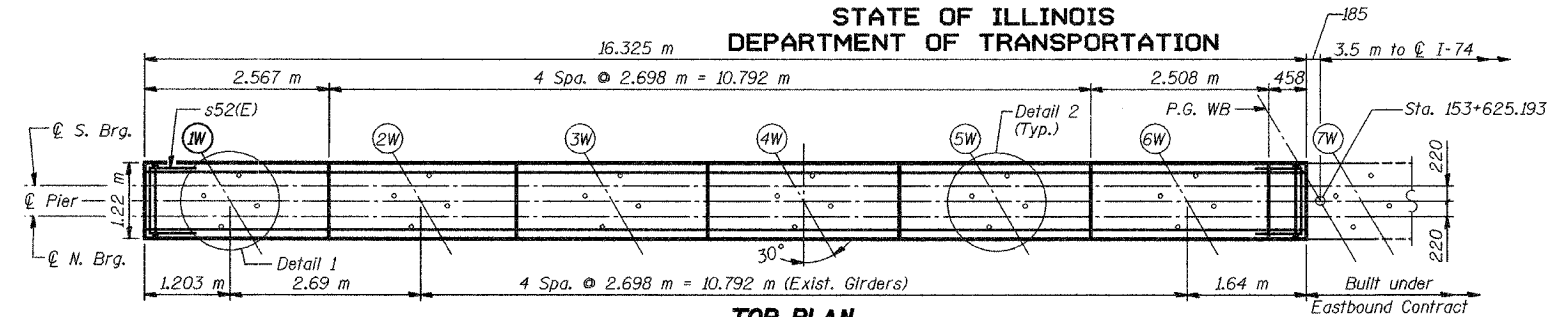


STATE OF ILLINOIS  
DEPARTMENT OF TRANSPORTATION

ROUTE NO.	SECTION	COUNTY	TOTAL SHEETS	SHEET NO.
F.A.I. 74	90-13HVB	TAZEWELL	1366	507
FED. ROAD DIST. NO. 7		ILLINOIS	FED. AID PROJECT-	

SHEET NO. 59  
68 SHEETS



**PILE DATA**  
Type: Steel HP 360x108  
Capacity: Driven to refusal  
Est. Length: 11 m  
No. Req'd: 8

\* 4-#25 t34(E) bars at 250 cts. Bottom (Typ.)

**BILL OF MATERIAL**

Bar	No.	Size	Length (m)	Shape
h55(E)	198	#15	5.89	—
h56(E)	14	#20	4.55	—
h57(E)	12	#20	6.0	—
n35(E)	32	#25	2.7	⌋
s52(E)	68	#15	2.4	⌋
t30(E)	16	#25	2.49	—
v59(E)	128	#20	5.43	—
v60(E)	100	#20	9.75	—
w30(E)	50	#20	1.6	—
w52(E)	10	#15	3.37	—
w54(E)	10	#15	1.45	—
Concrete Removal		m <sup>3</sup>	74.1	
Braced Excavation		m <sup>3</sup>	278	
Concrete Structures		m <sup>3</sup>	2.10	
Reinforcement Bars, Epoxy Coated		kg	6,880	
Furnishing Steel Piles HP360x108		m	88	
Driving Steel Piles		m	88	
Bridge Seat Sealer		m <sup>2</sup>	19.9	

**BAR v60 (E)**

**BAR n35(E)**

**BAR s52(E)**

**NOTES:**

1. Reinforcement bars designated (E) shall be epoxy coated.
2. Concrete clear cover shall be 50 mm minimum unless noted otherwise.
3. Space Reinforcement in cap to miss Anchor Bolts.
4. Pour steps monolithically with cap.
5. Epoxy Grout Bars w30(E) & w54(E) in minimum 230 mm deep drilled holes. The material and installation shall be in accordance with IDOT Standard Specification Section 584.
6. Bonded Construction Joint at Interface between existing concrete and proposed concrete shall be in accordance with Standard Specifications Article 503.09(a)(2).
7. For Anchor Bolt Details, see Sheet 41.
8. All edges shall have standard 20 mm chamfers except as noted.
9. Min. Lap for Bar #15=640 mm, #20=790 mm, #25=1.32 m.
10. Space w30(E) bars to miss existing reinforcement in Pier.
11. All dimensions are in millimeters (mm) except as noted.
12. See Special Provision for Braced Excavation.
13. Space reinforcement in footing to miss the piles.
14. Work this sht. with sht. 60.
15. The remaining portions of the bar splicers provided for the WB portion of the Pier 4 under EB contract shall be obtained from the Engineer by the Contractor and shall be incorporated in the WB Pier 4.
16. See sht. 60 for Sections A-A and B-B.
17. See sht. 60 for drain pipe details.
18. See sht. 60 for Details 1 & 2.
19. Existing reinforcement extending into new concrete shall be straightened, cleaned, and incorporated into the new construction. Cost included in Concrete Removal.

**LEGEND**



**PIER 4 RECONSTRUCTION DETAILS**

Date	Designed	EV	WESTBOUND F.A.I. ROUTE 74 OVER CAMP STREET, FARM CREEK, AND TP&W RR F.A.I. RTE. 74 SECTION (90-13HVB)BY TAZEWELL COUNTY STATION 153+625.193 STRUCTURE NO. 090-0009	Sheet No.
Revisions	Drawn	EV		59
	Checked	NPP		of 68
	Approved	NPP		
Prepared By: BRW, Inc. A Division of URS			1701 Golf Rd., Suite 1000 Rolling Meadows, IL.	BRW Job No. 17049-071