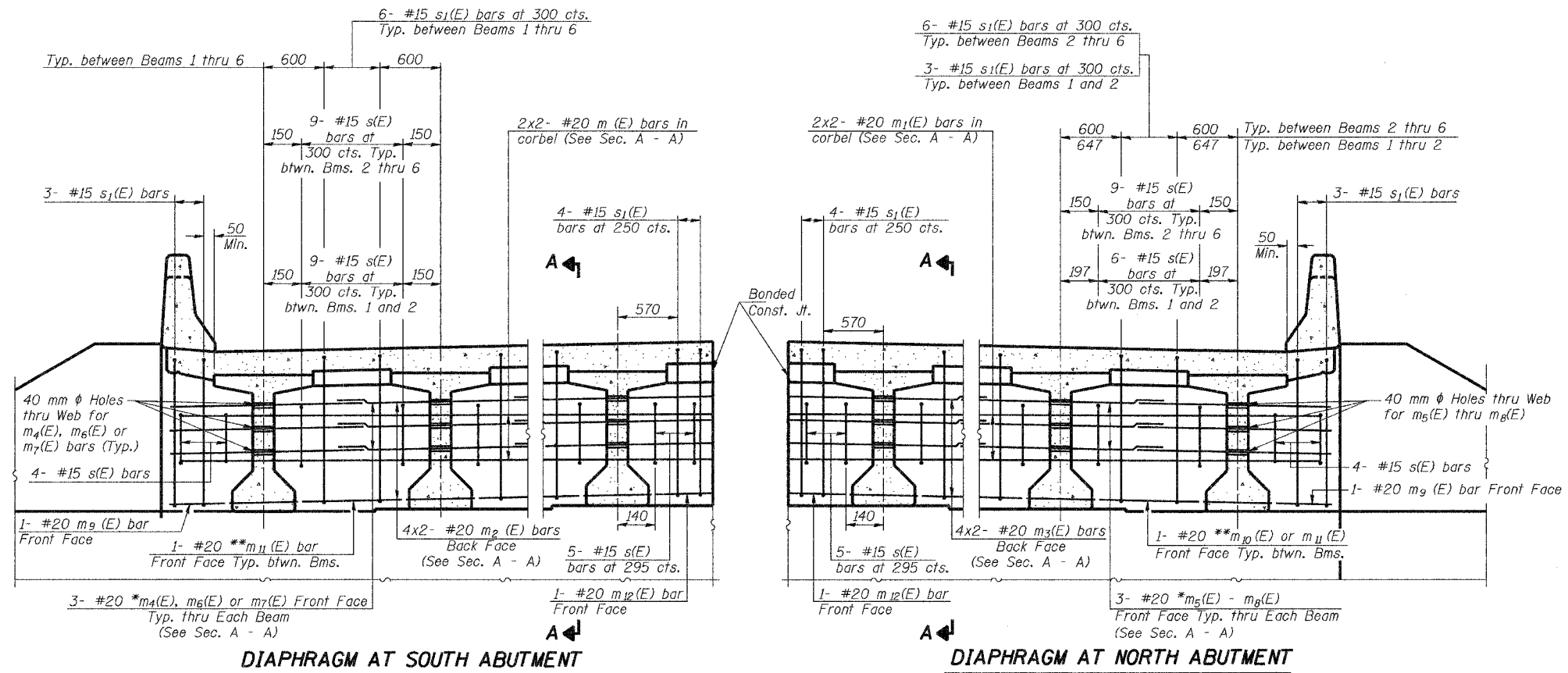


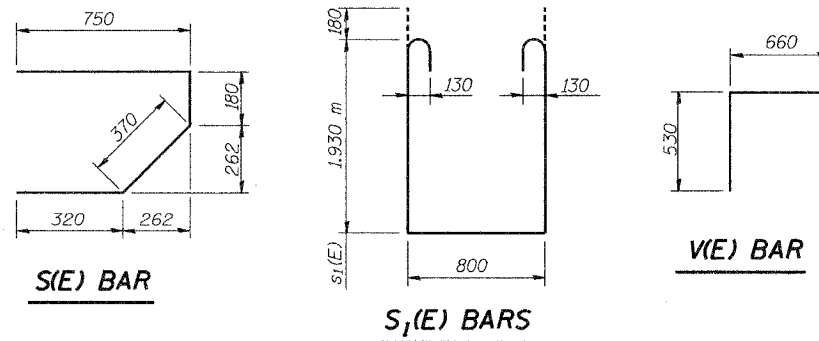
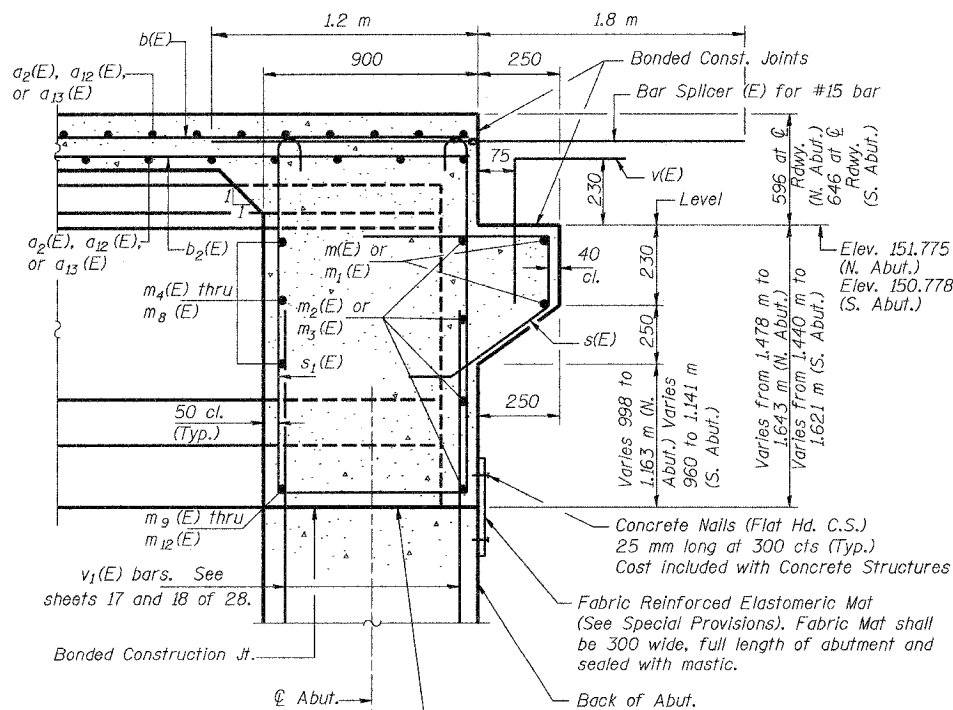
STATE OF ILLINOIS  
DEPARTMENT OF TRANSPORTATION

ROUTE NO.	SECTION	COUNTY	TOTAL SHEETS	SHEET NO.
F.A.I. 74	(90-14HB)BR	TAZEWELL	1366	508
FED. ROAD DIST. NO. 7	ILLINOIS	FED. AID PROJECT-		



Location	South Abutment		North Abutment	
	Bar * thru Beams	Bar ** between Beams	Bar * thru Beams	Bar ** between Beams
Beam 1	$m_4(E)$	$m_{11}(E)$	$m_8(E)$	$m_{10}(E)$
Beam 2	$m_6(E)$	$m_{11}(E)$	$m_5(E)$	$m_{11}(E)$
Beam 3	$m_6(E)$	$m_{11}(E)$	$m_6(E)$	$m_{11}(E)$
Beam 4	$m_6(E)$	$m_{11}(E)$	$m_6(E)$	$m_{11}(E)$
Beam 5	$m_6(E)$	$m_{11}(E)$	$m_6(E)$	$m_{11}(E)$
Beam 6	$m_7(E)$	$m_{11}(E)$	$m_7(E)$	$m_{11}(E)$

Notes: Reinforcement bars in diaphragm are billed with superstructure on sheet 9 of 28.  
Concrete in diaphragm is included with Concrete Superstructure on sheet 9 of 28.  
The  $s(E)$  and  $s_1(E)$  bars shall be placed parallel to the Beams. Spacing for these bars shall be at right angles to the Beams.  
All dimensions are in millimeters (mm) except as noted.  
Bars indicated thus 3 x 3-#20 etc. indicates 3 lines of bars with 3 lengths per line.



**MIN. BAR LAP**  
#20 bar = 850

Beam ends shall be set on an initial 15 mm Min. grout (2:1 sand and portland cement, very dry mix) to provide full bearing. Any excess grout squeezed out from under the Beam shall be removed. Cost included with Concrete Structures.

Date	Designed TDN	INTERSTATE 74 AND RAMPS L-1 AND L-4 OVER E. WASHINGTON STREET F.A.I. RTE. 74 SECTION (90-14HB)BR TAZEWELL COUNTY STATION 153+868.540 STRUCTURE NO. 090-0163 (WB)	Sheet No.
Revisions	Drawn BKN		11
	Checked DCS		of 28
	Approved KWB		
Prepared By:	<b>URS</b>		3040 North University Avenue Decatur, IL 62526

Dimensions at right angles to abutment, except as shown.