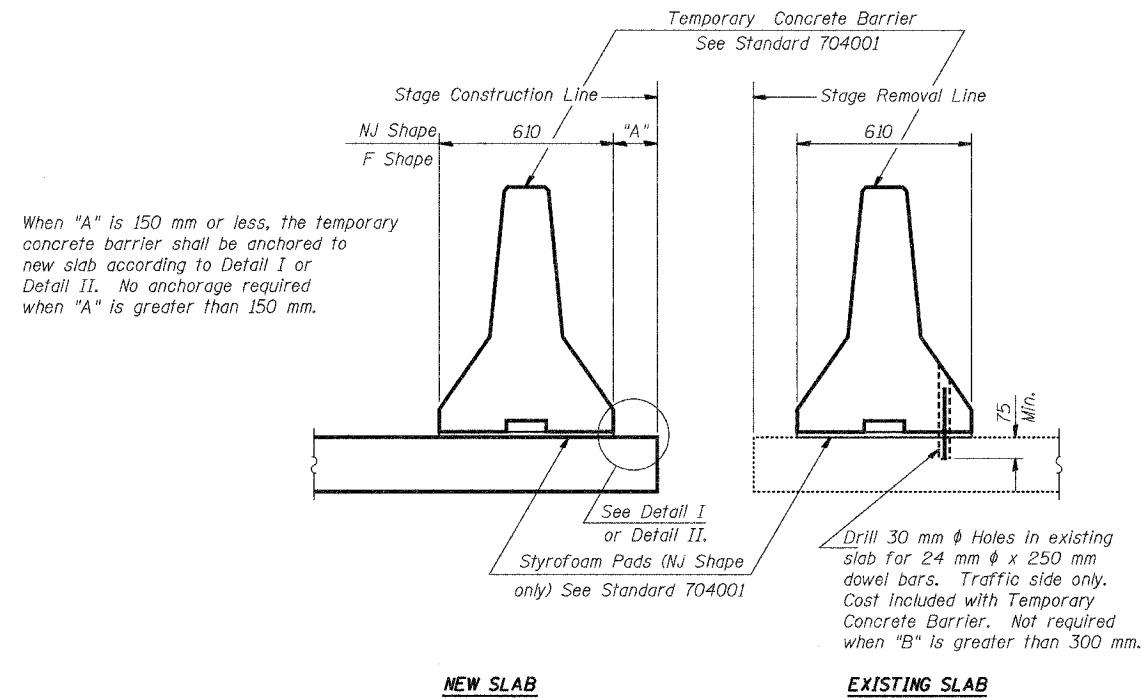


STATE OF ILLINOIS  
DEPARTMENT OF TRANSPORTATION

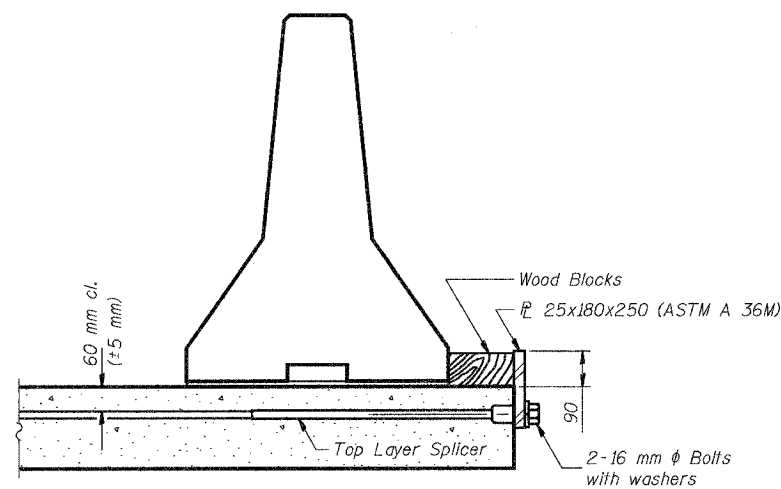
ROUTE NO.	SECTION	COUNTY	TOTAL SHEETS	SHEET NO.
F.A.I. 74	(90-14HB)BR	TAZEWELL	1366	541
FED. ROAD DIST. NO. 7	ILLINOIS	FED. AID PROJECT		



**SECTIONS THRU SLAB**

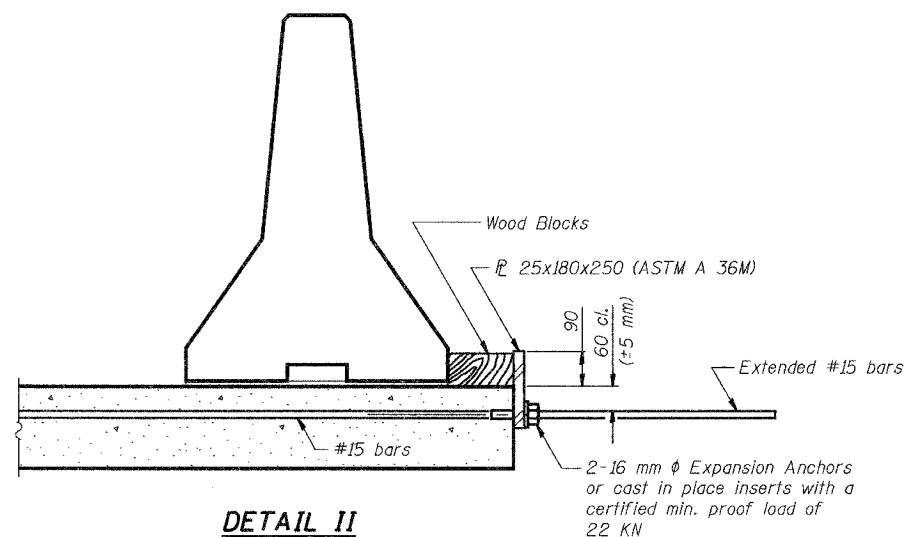
**NOTES**

- Detail I - With Bar Splicer or Couplers:  
Connect one (1) 25x180x250 steel  $\bar{L}$  to the top layer of couplers with 2-16 mm  $\phi$  bolts screwed to coupler at approximate  $\bar{C}$  of each 3 m barrier panel.
- Detail II - With Extended Reinforcement Bars:  
Connect one (1) 25x180x250 steel  $\bar{L}$  to the concrete slab with 2-16 mm  $\phi$  Expansion Anchors or cast in place inserts spaced between the top layer of reinforcement at approximate  $\bar{C}$  of each 3 m barrier panel.
- Cost of anchorage included with Temporary Concrete Barrier.
- All dimensions are in millimeters (mm) except as noted.



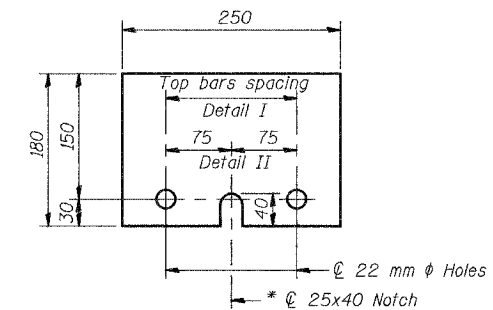
**DETAIL I**

The 25x180x250 Plate shall not be removed until Stage II Construction forms and reinforcement bars are in place.



**DETAIL II**

The 25x180x250 Plate shall not be removed until Stage II Construction forms and all reinforcement bars are in place and the concrete is ready to be placed.



**$\bar{L}$  25x180x250**

\* Required only with Detail II

TEMPORARY CONCRETE BARRIER FOR STAGE CONSTRUCTION			
Date	Designed	INTERSTATE 74 AND RAMPS L-1 AND L-4 OVER E. WASHINGTON STREET F.A.I. RTE. 74 SECTION (90-14HB)BR TAZEWELL COUNTY STATION 153+868.540 STRUCTURE NO. 090-0163 (WB)	Sheet No.
Revisions	Drawn BKN		24
	Checked		of 28
	Approved KWB		
Prepared By:	<b>URS</b> 3040 North University Avenue Decatur, IL 62526		URS Job No. 2100001243.01