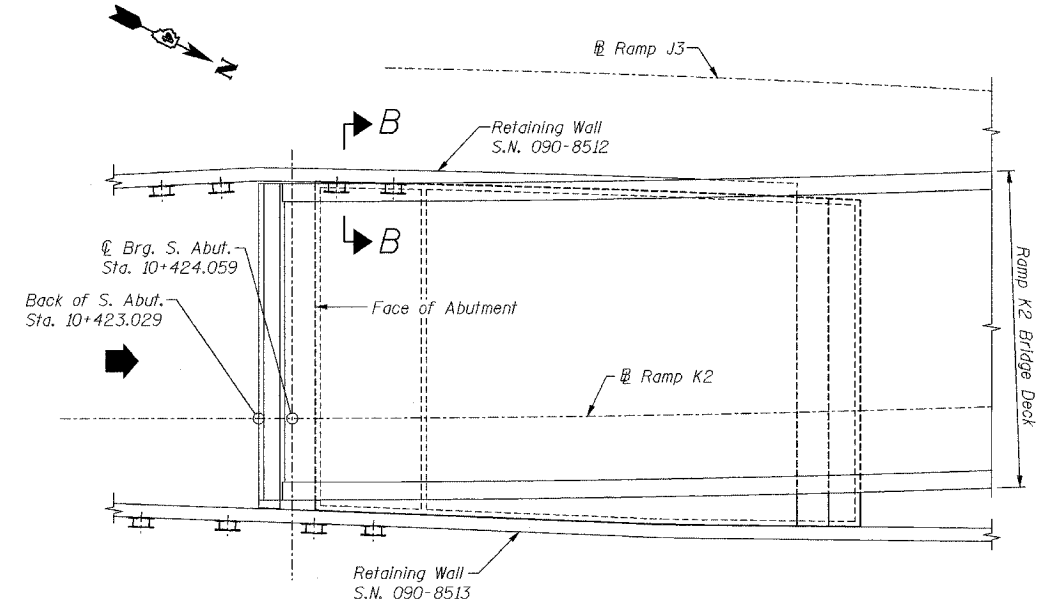
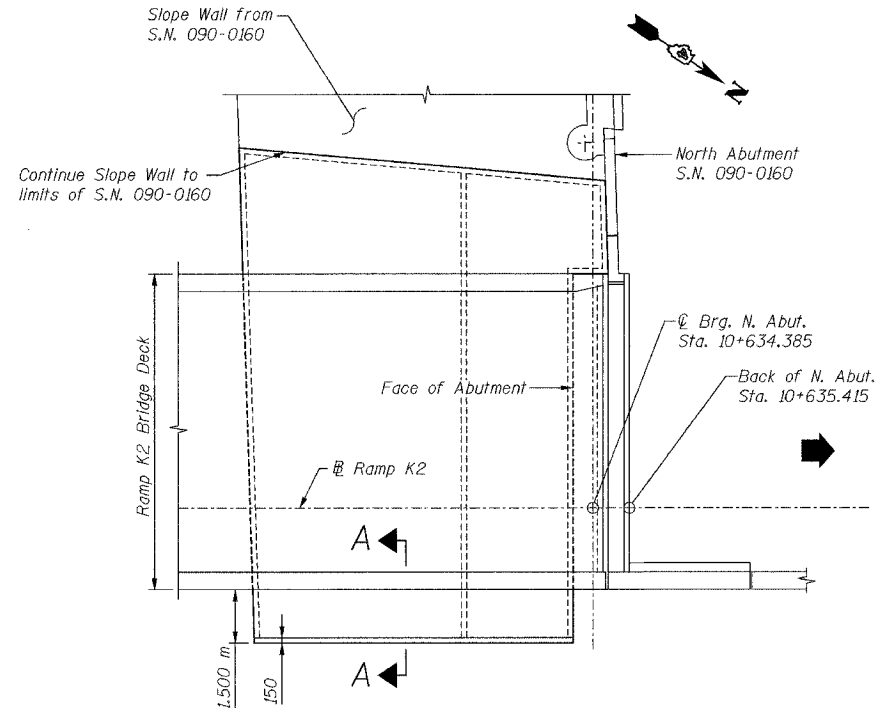


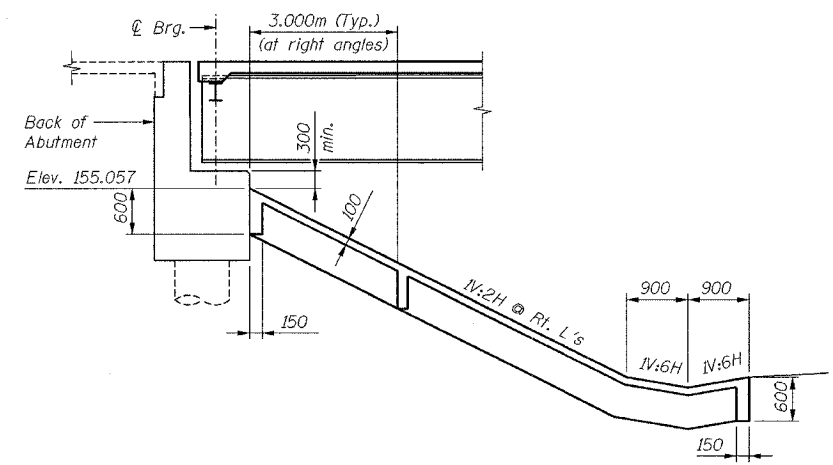
68201	ROUTE No.	SECTION	COUNTY	TOTAL SHEETS	SHEET NO.
FAI 74	*	TAZEWELL	1366	547	
STA.		TO STA.			
F.H.W.A. REGION		ILLINOIS		PROJECT	



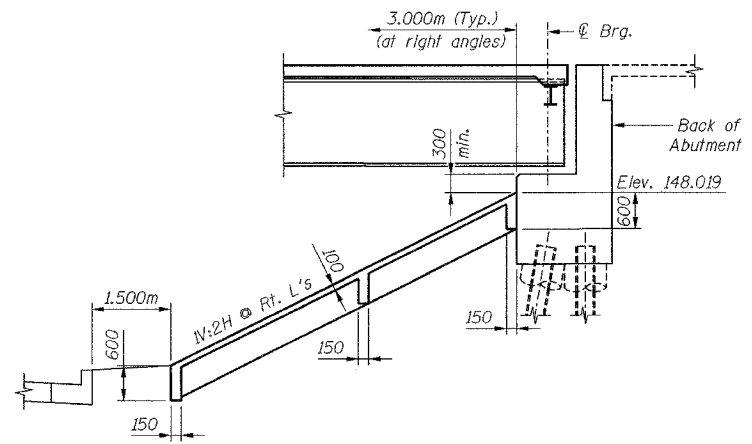
PLAN OF SLOPEWALL AT S. ABUTMENT



PLAN OF SLOPEWALL AT N. ABUTMENT



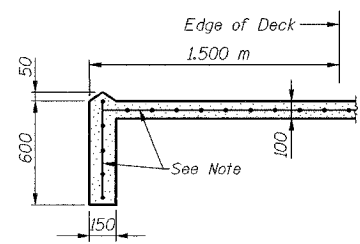
SECTION THRU SLOPEWALL AT S. ABUTMENT



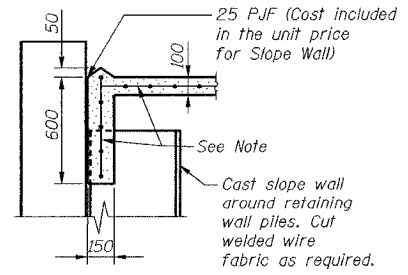
SECTION THRU SLOPEWALL AT N. ABUTMENT

CURVE DATA

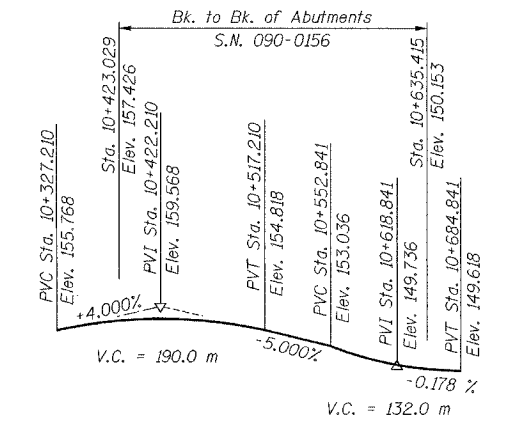
RAMP J-3	RAMP K-2
$\Delta = 6^{\circ}05'48.00''$	$\Delta = 7^{\circ}58'57.09''$
$R = 450.000 \text{ m}$	$R = 580.000 \text{ m}$
$T = 23.964 \text{ m}$	$T = 40.469 \text{ m}$
$L = 47.883 \text{ m}$	$L = 80.806 \text{ m}$
$E = 0.638 \text{ m}$	$E = 1.410 \text{ m}$
$PC = 10+204.232$	$PC = 10+423.959$
$PI = 10+228.196$	$PI = 10+464.428$
$PT = 10+252.115$	$PT = 10+504.765$
$SE = 6.2\%$	$SE = 4.4\%$
Transition in: 10+177 to 10+218	Transition in: 10+385 to 10+443
Transition out: 10+237 to 10+283	Transition out: 10+484 to 10+547



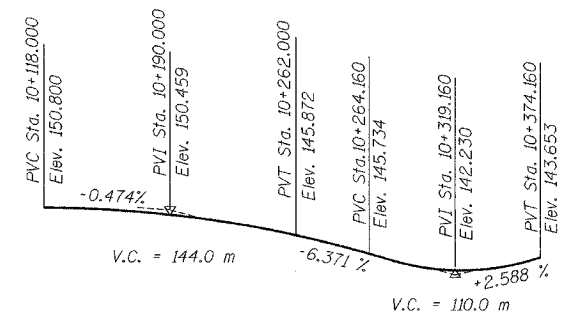
SECTION A-A



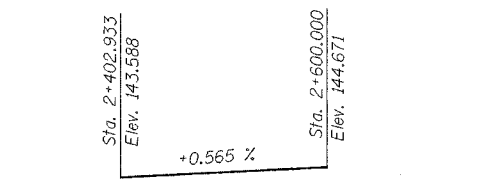
SECTION B-B



PROFILE GRADE RAMP K-2



PROFILE GRADE RAMP J-3



PROFILE MAIN STREET

Note:
Slope Wall shall be reinforced with welded wire fabric, 152 x 152 - MW25.8 x MW25.8 with a mass of 2.91 kg/m². (Cost included in The Unit Price for Slope Wall).

ILLINOIS DEPARTMENT OF TRANSPORTATION
RAMP K-2 OVER
MAIN ST & RAMP J-3
F.A.I. ROUTE 74 (I-74)
SECTION 90-IHIB-5
GENERAL PLAN II

SN: 090-0156
TAZEWELL CO., IL.

STA. 10+529.222
DATE: 12-23-04

alfred benesch & company
CONSULTING ENGINEERS
205 NORTH MICHIGAN AVENUE, CHICAGO, ILLINOIS 60601
JOB NO. 3573

2/3/2005

m:\p\ro3573\c\mpk2\st11g2-7c0900056.dgn

DESIGNED	KMP
CHECKED	WJZ
DRAWN	VH
CHECKED	LRB