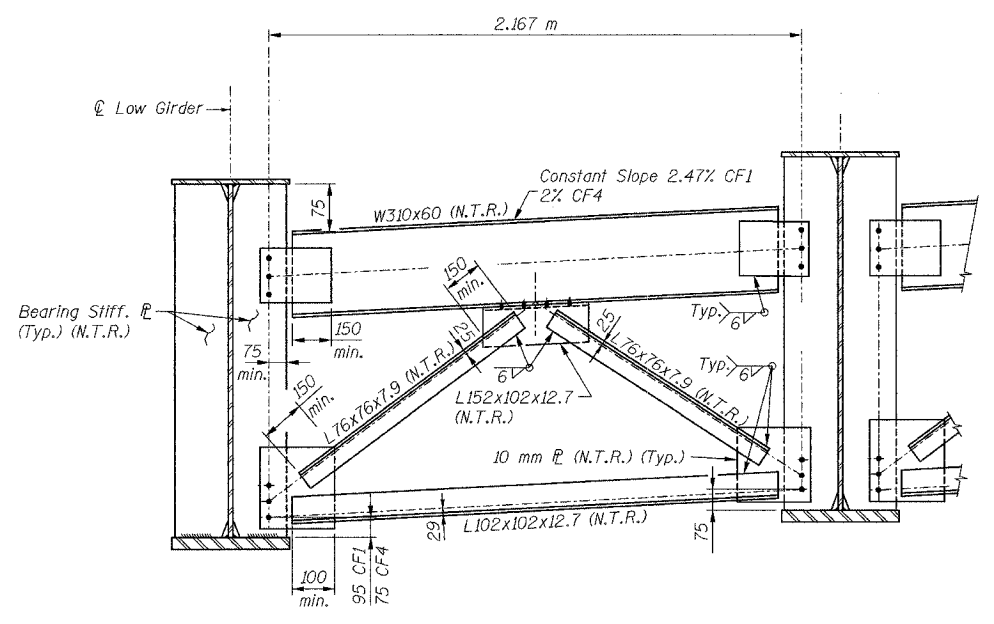
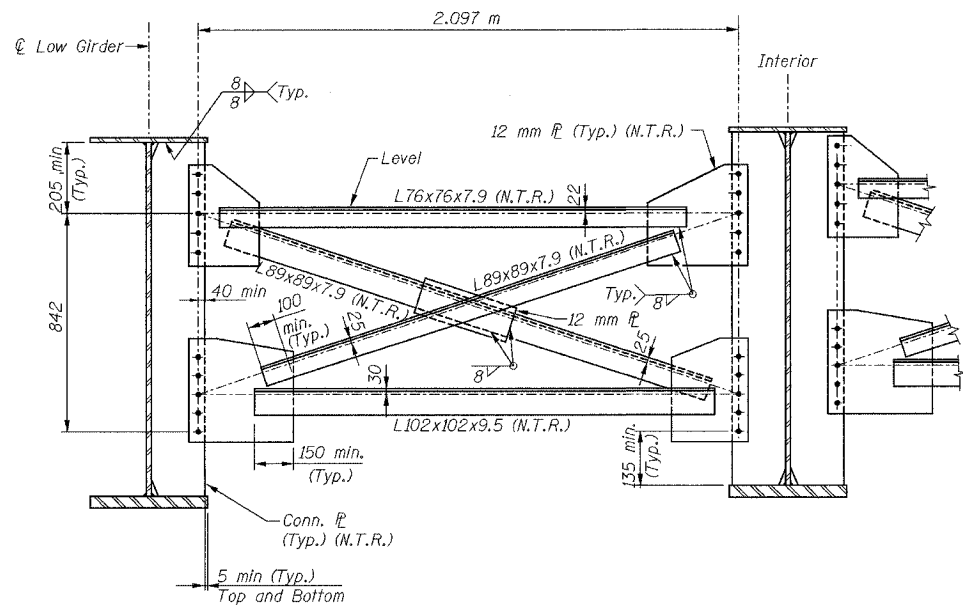


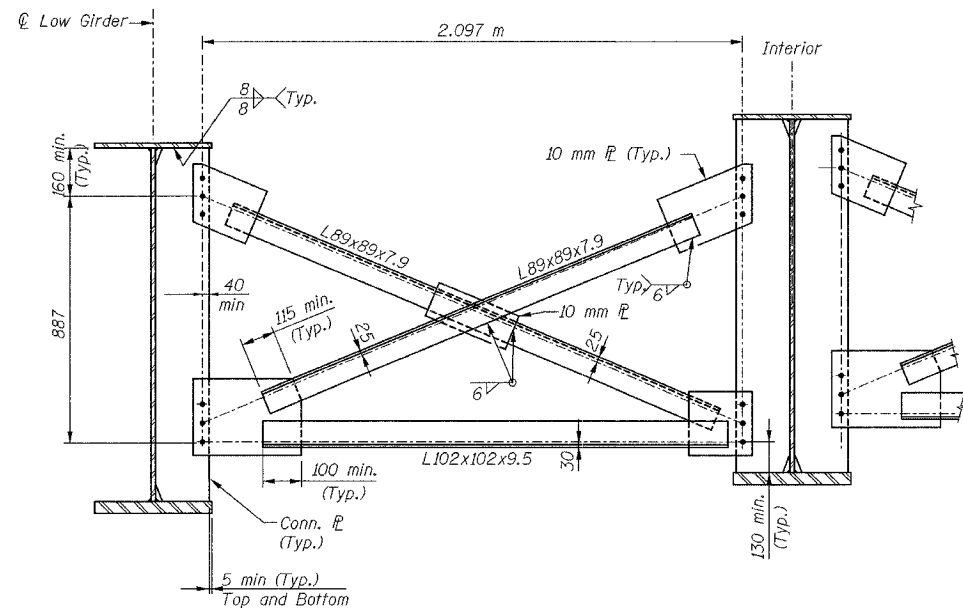
68201	ROUTE No.	SECTION	COUNTY	TOTAL SHEETS	SHEET NO.
	FAI 74	*	TAZEWELL	1366	568
STA.			TO STA.		
F.I.L.W.A. REGION			ILLINOIS PROJECT		
SHEET 22 OF 56					



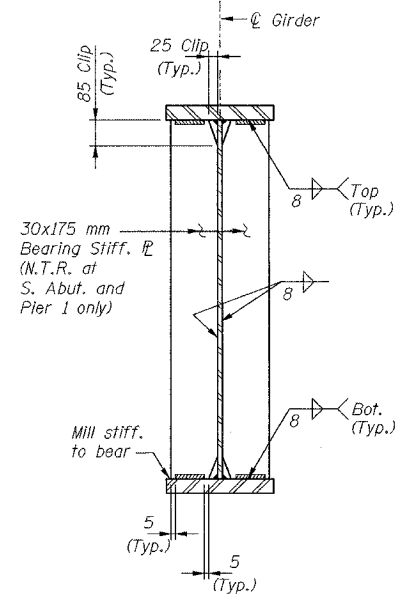
**CROSS FRAME CF1 & CF4**  
(Looking Up Station)  
(N.T.R. is applicable to CF1 only)



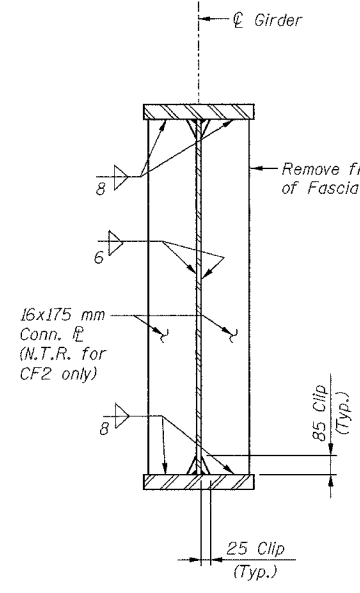
**INTERIOR CROSS FRAME CF2**  
(Looking Up Station)



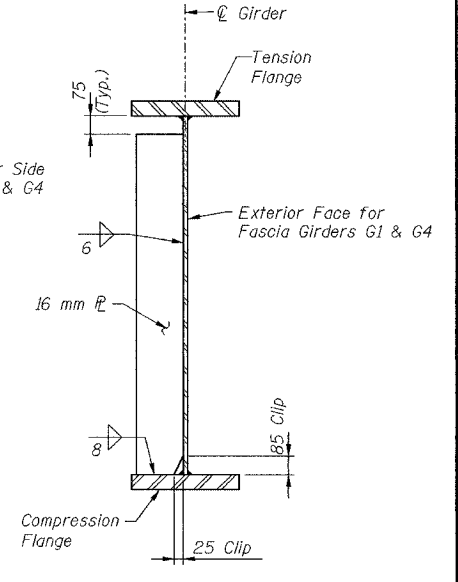
**INTERIOR CROSS FRAME CF3**  
(Looking Up Station)



**BEARING STIFFENER**



**CONNECTION PLATE**



**TRANSVERSE STIFFENER**

**NOTES:**

- All bolts in cross frames shall be M22 H.S. bolts with 28 mm  $\phi$  oversized holes unless noted otherwise.
- Two hardened washers are required for all oversized holes.
- All cross frames, connection plates and bearing stiffeners shall be M270M Grade 345 steel except fill plates.
- All Splice plate material, except Fill plates, shall meet N.T.R. requirements.
- Work this sheet with sheets 19 & 20.

DESIGNED	JQZ
CHECKED	MRB
DRAWN	VH
CHECKED	LRB

**ab** **alfred benesch & company**  
CONSULTING ENGINEERS  
205 NORTH MICHIGAN AVENUE, CHICAGO, ILLINOIS 60601  
JOB NO. 3573

ILLINOIS DEPARTMENT OF TRANSPORTATION  
RAMP K-2 OVER  
MAIN ST & RAMP J-3  
F.A.I. ROUTE 74 (I-74)  
SECTION 90-IIHB-5  
**CROSS FRAME DETAILS**  
SN: 090-0156  
TAZEWELL CO., IL.  
STA. 10+529.222  
DATE: 12-23-04

2/3/2005  
m:\proj\3573\ampk2\stl\dl-7a0900\56.dgn