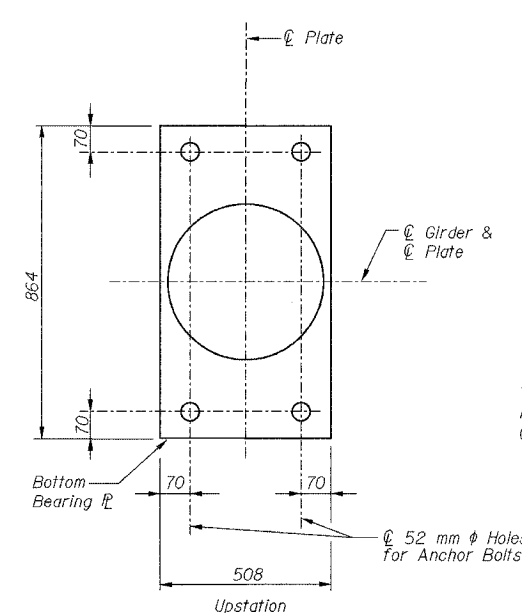
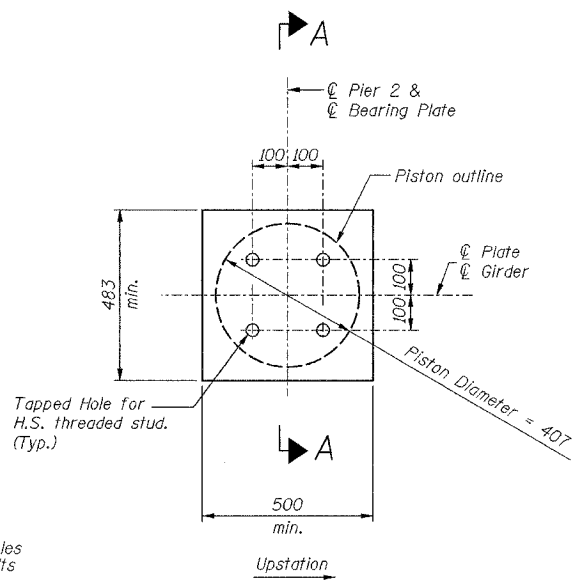


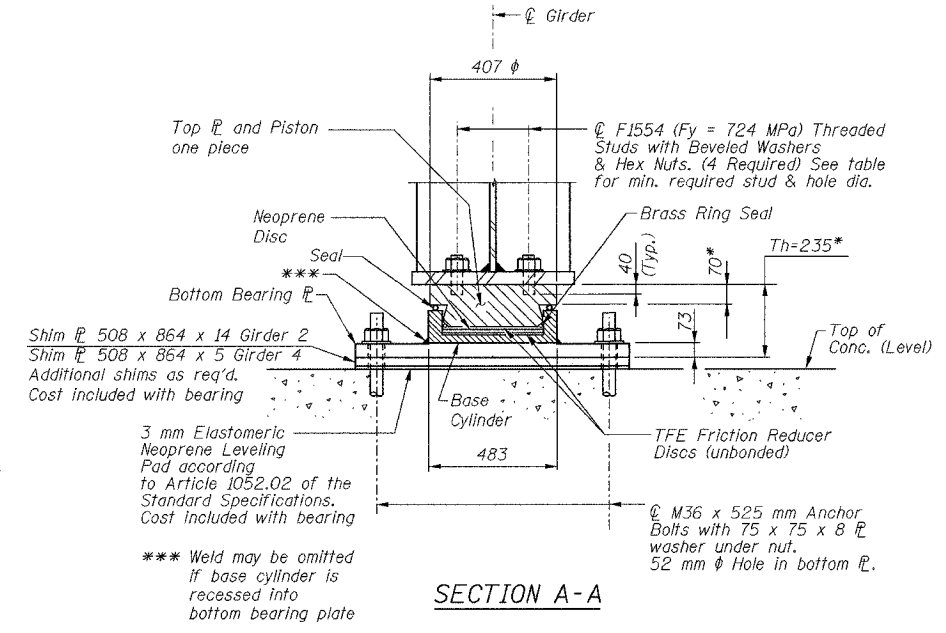
68201	ROUTE No.	SECTION	COUNTY	TOTAL SHEETS	SHEET NO.
	FAI 74	*	TAZEWELL	1366	573
STA.			TO STA.		
F.I.L.W.A. REGION			ILLINOIS PROJECT		



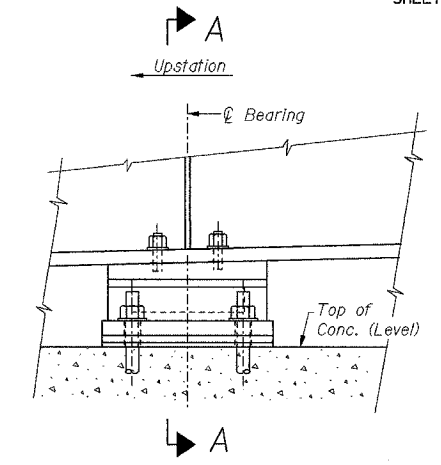
PLAN  
BOT. BRG. PL &  
BASE CYLINDER



PLAN  
TOP PL - PISTON  
Girder not shown for clarity.



SECTION A-A



ELEVATION

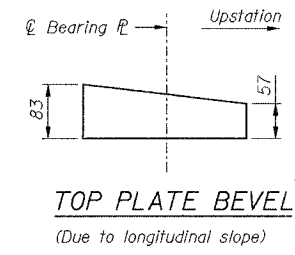
Note: Top of Top PL is sloped. Bottom of PL is to be level.

\*\*\* Weld may be omitted if base cylinder is recessed into bottom bearing plate

\*Note: Dimensions are given at bearing. Top Plate Beveled.

NOTES:

- All steel for the Floating Bearings shall conform to the requirements of AASHTO M 270M Grade 345, unless otherwise noted. See details for Anchor Bolt materials. Anchor bolts, studs, nuts, and washers shall be hot-dipped galvanized in accordance with AASHTO M 232M. Teflon and stainless steel materials shall conform to AASHTO requirements and IDOT "Special Provisions for Floating Bearings".
- See sheet 19 for girder layout.
- Dimensions and Bearing characteristics shown in contract drawings are exclusively those necessary for Bearing detailing. Total bearing height (Th) is based on samples of three different bearing Manufacturers. Actual Bearing height may differ from contract plans. Contractor to verify Bearing height and adjust seat elevations, if required, prior to placing pier concrete. If actual dimensions differ to those shown on the plans, then Contractor shall be responsible for meeting AASHTO edge distance requirements and for ensuring adequate clearance for installation of all Anchor Bolts and threaded studs.
- Bearing assemblies shall be designed and assembled to allow replacement by jacking the superstructure.
- Vertical Design Loads are the governing service loads; horizontal design loads shall be 20% of vertical load, unless otherwise noted.
- See sheet 30 for Anchor Bolt Details.



TOP PLATE BEVEL  
(Due to longitudinal slope)

LOCATION	TYPE	PAY ITEM DESIGNATION KN	VERT. DESIGN LOAD ** KN	MIN. DIA. THREADED STUD	THREADED STUD HOLE DIA. AT GIRDER BOTTOM PL	LL ROTATION RANGE, RADIANS
Pier 2	Floating Bearings, Fixed	1850	1710	M22	24	-0.0045 to 0.0032

BILL OF MATERIAL

Item	Unit	Total
Floating Bearings, Fixed - 1850KN	Each	4

FLOATING BEARING - FIXED  
(N. T. S.)

DESIGNED	HAA
CHECKED	KWS
DRAWN	VH
CHECKED	LRB

ILLINOIS DEPARTMENT OF TRANSPORTATION  
RAMP K-2 OVER  
MAIN ST & RAMP J-3  
F.A.I. ROUTE 74 (I-74)  
SECTION 90-IIB-5  
FIXED FLOATING BEARING DETAILS  
PIER 2

alfred benesch & company  
CONSULTING ENGINEERS  
205 NORTH MICHIGAN AVENUE, CHICAGO, ILLINOIS 60601  
JOB NO. 3573

SN: 090-0156  
TAZEWELL CO., IL.  
STA. 10+529.222  
DATE: 12-23-04

2/3/2005 m:\p\03573\vr-ampk2\stlib\d3-7a0900156.dgn