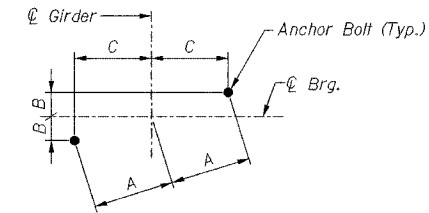
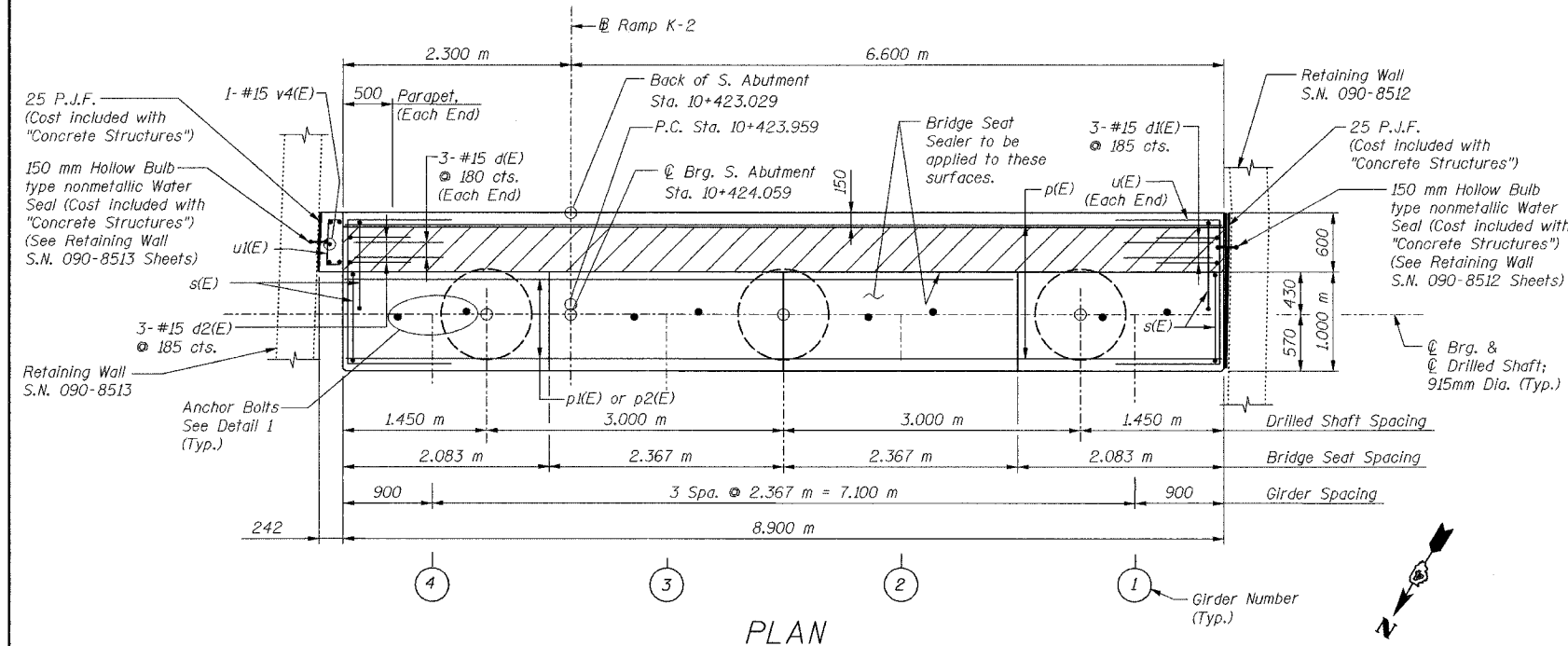
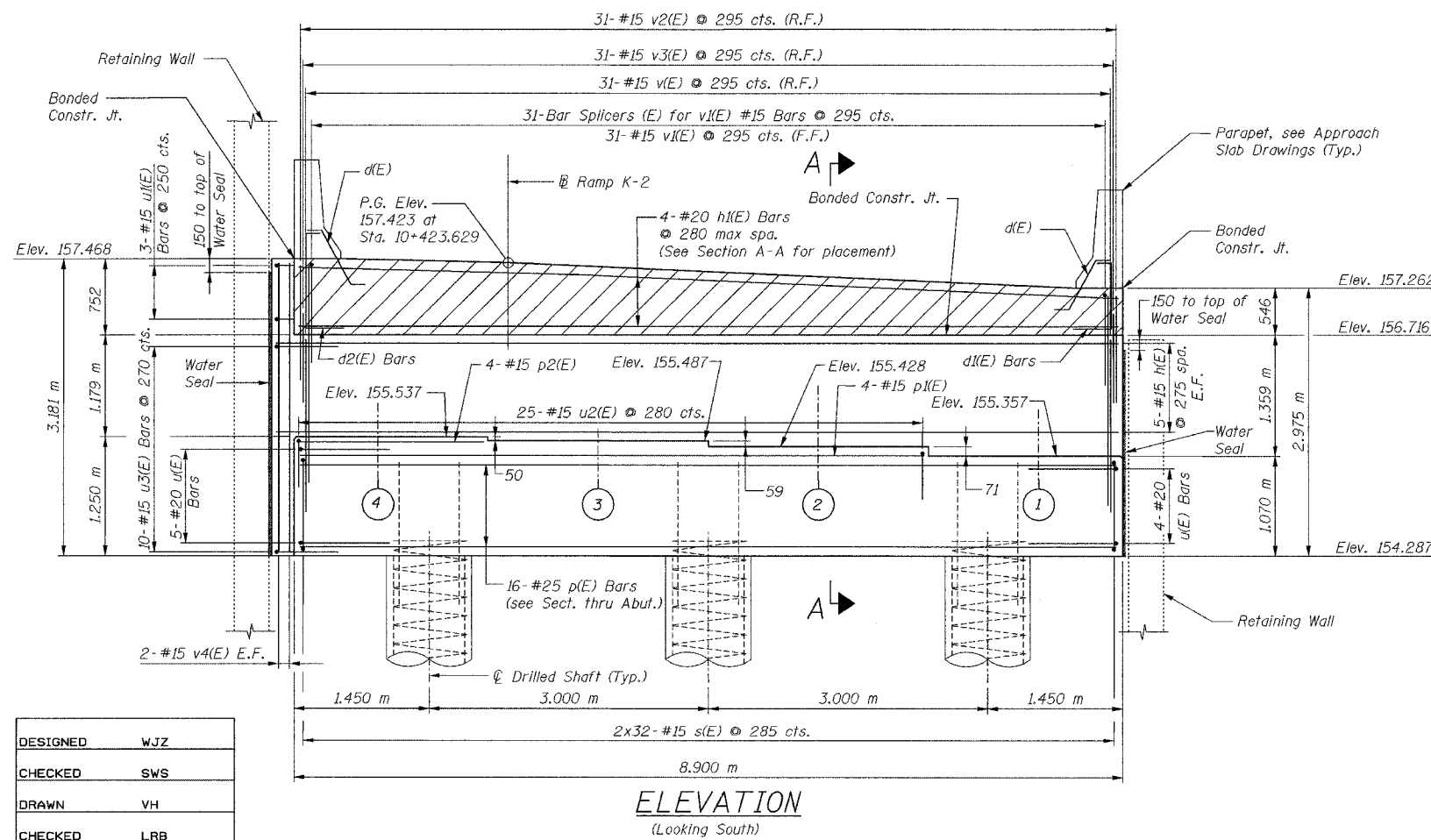


ROUTE No.	SECTION	COUNTY	TOTAL SHEETS	SHEET NO.
FAI 74	*	TAZEWELL	1366	578
STA.		TO STA.		
F.H.W.A. REGION		ILLINOIS	PROJECT	



	A	B	C
Girder 1	327	27	326
Girder 2	327	27	326
Girder 3	327	27	326
Girder 4	367	30	366

DETAIL 1



DESIGNED	WJZ
CHECKED	SWS
DRAWN	VH
CHECKED	LRB

NOTES:

- Use the following minimum lap lengths unless otherwise noted:
 #15 - 640
 #20 - 790
 #25 - 1.32m
- Work this Sheet with Sheet 34.
- Pour steps monolithically with Pile Bent.
- E.F. denotes Each Face.
- F.F. denotes Front Face.
- I.F. denotes Inside Face.
- O.F. denotes Outside Face.
- R.F. denotes Rear Face.
- Space reinforcement in Pile Bent to miss anchor bolts.
- For Foundation Layout, see Sheet 4.
- For Bar Splicer Details, see Sheet 45.
- For Section A-A see Sheet 34.

ILLINOIS DEPARTMENT OF TRANSPORTATION
 RAMP K-2 OVER
 MAIN ST & RAMP J-3
 F.A.I. ROUTE 74 (I-74)
 SECTION 90-IIIB-5
SOUTH ABUTMENT
PLAN AND ELEVATION

alfred benesch & company
 CONSULTING ENGINEERS
 205 NORTH MICHIGAN AVENUE, CHICAGO, ILLINOIS 60601
 JOB NO. 3573

SN: 090-0156
 TAZEWELL CO., IL.

STA. 10+529.222
 DATE: 12-23-04

2/3/2005

m:\p\013573\compk2\st1tab1-fa0900156.dgn