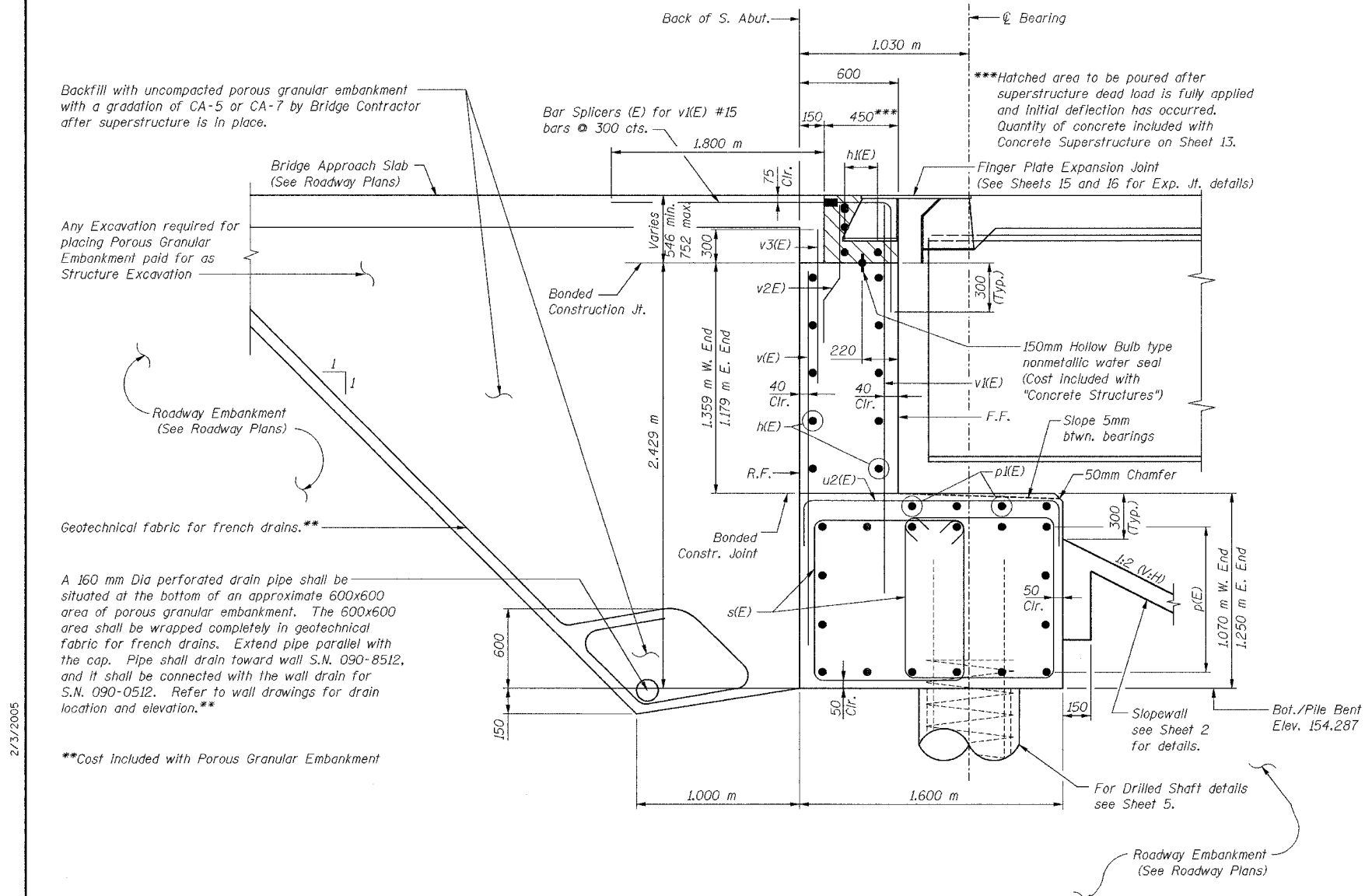


68201	ROUTE No.	SECTION	COUNTY	TOTAL SHEETS	SHEET NO.
	FAI 74	*	TAZEWELL	1366	579
STA.		TO STA.			
F.A.I.W.A. REGION		ILLINOIS		PROJECT	



Backfill with uncompacted porous granular embankment with a gradation of CA-5 or CA-7 by Bridge Contractor after superstructure is in place.

Bridge Approach Slab (See Roadway Plans)

Any Excavation required for placing Porous Granular Embankment paid for as Structure Excavation

Roadway Embankment (See Roadway Plans)

Geotechnical fabric for french drains.**

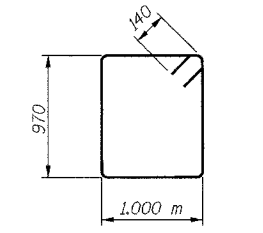
A 160 mm Dia perforated drain pipe shall be situated at the bottom of an approximate 600x600 area of porous granular embankment. The 600x600 area shall be wrapped completely in geotechnical fabric for french drains. Extend pipe parallel with the cap. Pipe shall drain toward wall S.N. 090-8512, and it shall be connected with the wall drain for S.N. 090-0512. Refer to wall drawings for drain location and elevation.**

**Cost Included with Porous Granular Embankment

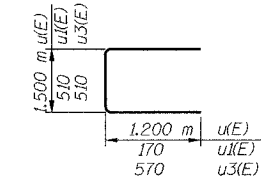
2/3/2005
ms:\p\proj\3573\vr\ampk2\stflab2-7a0900056.dgn

- NOTES:**
1. Work this Sheet with Sheet 33.
 2. For Bearing Details, see Sheet 26.
 3. For Bar Splicer Details, see Sheet 45.
 4. E.F. denotes Each Face.
 5. F.F. denotes Front Face.
 6. I.F. denotes Inside Face.
 7. O.F. denotes Outside Face.
 8. R.F. denotes Rear Face.

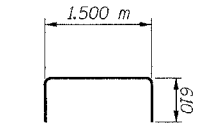
DESIGNED	WJZ
CHECKED	SWS
DRAWN	VH
CHECKED	LRB



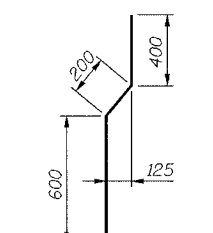
BAR s(E)



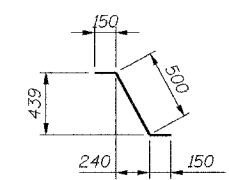
BARS u(E), u1(E), & u3(E)



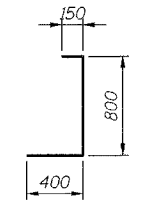
BAR u2(E)



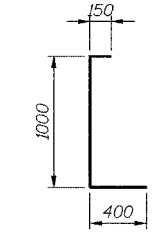
BAR v2(E)



BAR d(E)



BAR d1(E)



BAR d2(E)

BILL OF MATERIAL

Bar	No.	Size	Length	Shape
d(E)	6	# 15	0.80	U
d1(E)	3	# 15	1.35	U
d2(E)	3	# 15	1.55	U
h(E)	10	# 15	9.04	—
h1(E)	4	# 20	8.80	—
p(E)	16	# 25	8.80	—
p1(E)	4	# 15	6.72	—
p2(E)	4	# 15	1.98	—
s(E)	64	# 15	4.22	□
u(E)	9	# 20	3.90	U
u1(E)	3	# 15	0.85	U
u2(E)	25	# 15	2.72	U
u3(E)	10	# 15	1.65	U
v(E)	31	# 15	2.15	—
v1(E)	31	# 15	2.35	—
v2(E)	31	# 15	1.20	—
v3(E)	31	# 15	0.95	—
v4(E)	5	# 15	3.00	—
Bar Splicer (E)	EACH		31	
Concrete Structures	CU M		23.9	
Porous Granular Embankment	CU M		57	
Reinforcement Bars, Epoxy Coated	KG		1,850	
Bridge Seat Sealer	SQ M		21	
Slope Wall 100 mm	SQ M		162	
Structure Excavation*	CU M		83	

*Structure Excavation quantity computed based on existing ground elevations.

SECTION A-A THRU ABUTMENT

ILLINOIS DEPARTMENT OF TRANSPORTATION
 RAMP K-2 OVER
 MAIN ST & RAMP J-3
 F.A.I. ROUTE 74 (I-74)
 SECTION 90-IIB-5

SOUTH ABUTMENT DETAILS

SN: 090-0156
 TAZEWELL CO., IL.

STA. 10+529.222
 DATE: 12-23-04

alfred benesch & company
 CONSULTING ENGINEERS
 205 NORTH MICHIGAN AVENUE, CHICAGO, ILLINOIS 60601
 JOB NO. 3573