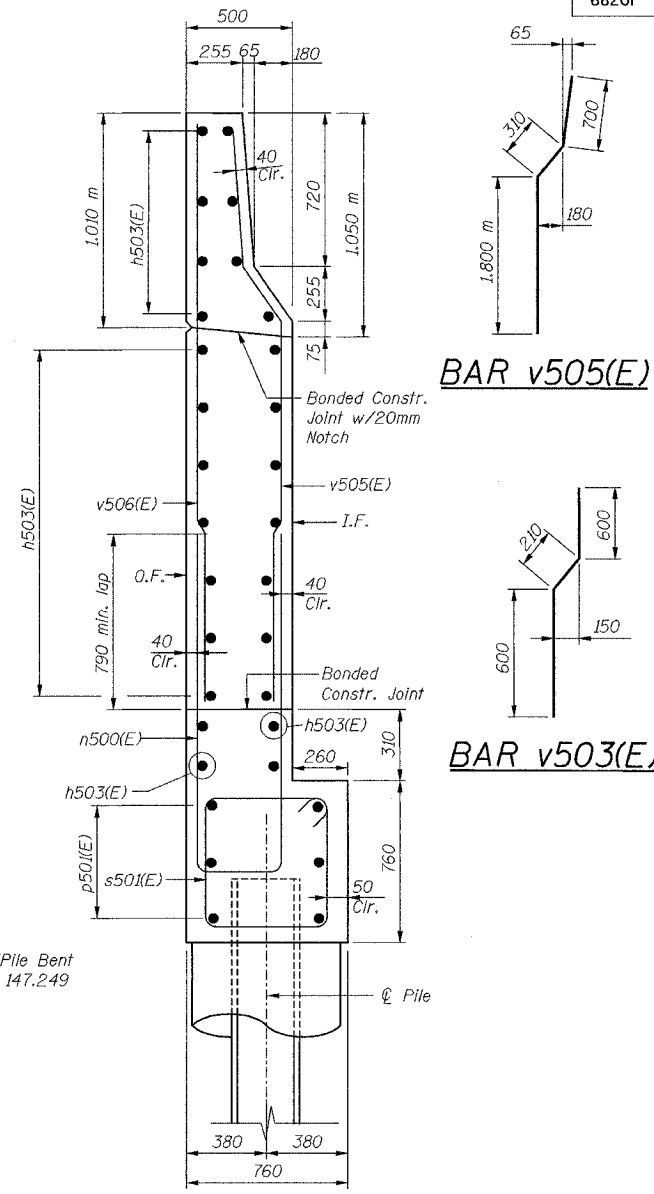
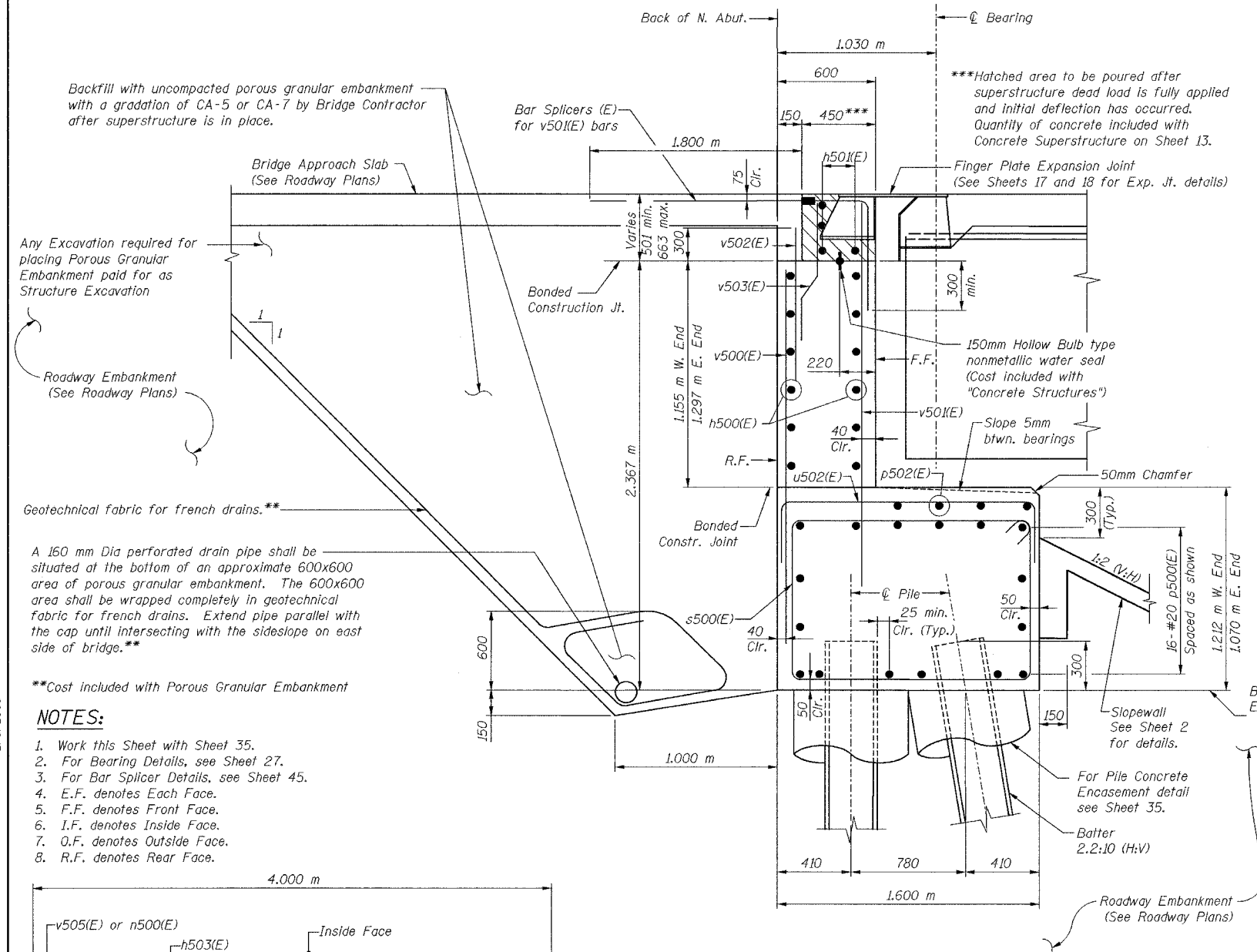


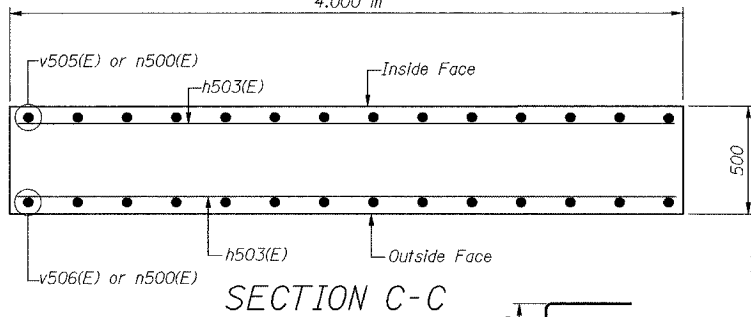
ROUTE No.	SECTION	COUNTY	TOTAL SHEETS	SHEET NO.
FAI 74	*	TAZEWELL	1366	581
STA.		TO STA.		
F.I.W.A. REGION		ILLINOIS PROJECT		



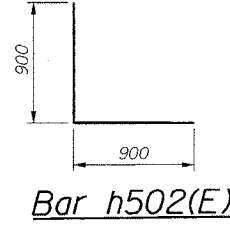
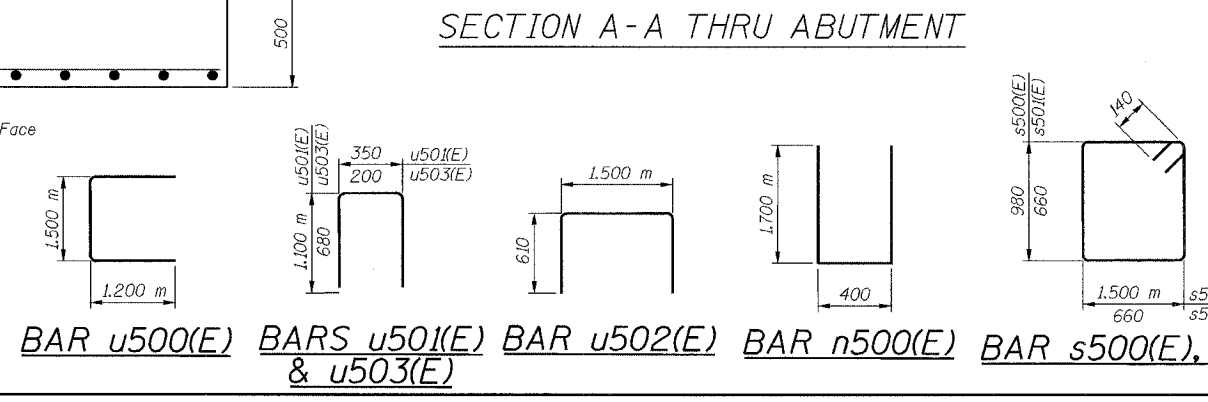
BILL OF MATERIAL

Bar	No.	Size	Length	Shape
h500(E)	12	# 15	8.80	—
h501(E)	4	# 20	8.10	—
h502(E)	18	# 15	1.80	J
h503(E)	26	# 15	3.90	—
h504(E)	20	# 15	1.60	—
h505(E)	6	# 15	1.18	—
n500(E)	14	# 20	3.80	U
p500(E)	16	# 20	8.80	—
p501(E)	6	# 25	3.90	—
p502(E)	4	# 15	6.72	—
p503(E)	4	# 15	1.98	—
s500(E)	36	# 15	5.24	□
s501(E)	15	# 15	2.92	□
u500(E)	9	# 20	3.90	U
u501(E)	2	# 15	2.55	U
u502(E)	25	# 15	2.72	U
u503(E)	5	# 15	1.56	U
v500(E)	31	# 15	2.10	—
v501(E)	31	# 15	2.50	—
v502(E)	30	# 15	0.95	—
v503(E)	30	# 15	1.41	—
v504(E)	10	# 15	2.78	—
v505(E)	14	# 20	2.81	—
v506(E)	14	# 20	2.74	—
Bar Splicers (E)	EACH		30	
Furnishing Steel Piles HP360x132	M		127.0	
Driving Steel Piles	M		127.0	
Concrete Structures	CU M		28.9	
Porous Granular Embankment	CU M		54	
Reinforcement Bars, Epoxy Coated	KG		2,260	
Bridge Seat Sealer	SQ M		21	
Slope Wall 100 mm	SQ M		149	
Test Pile Steel HP360x132	EACH		1	

- NOTES:**
1. Work this Sheet with Sheet 35.
 2. For Bearing Details, see Sheet 27.
 3. For Bar Splicer Details, see Sheet 45.
 4. E.F. denotes Each Face.
 5. F.F. denotes Front Face.
 6. I.F. denotes Inside Face.
 7. O.F. denotes Outside Face.
 8. R.F. denotes Rear Face.



DESIGNED	WJZ
CHECKED	SWS
DRAWN	VH
CHECKED	LRB



ILLINOIS DEPARTMENT OF TRANSPORTATION
 RAMP K-2 OVER
 MAIN ST & RAMP J-3
 F.A.I. ROUTE 74 (I-74)
 SECTION 90-IHB-5
NORTH ABUTMENT DETAILS

alfred benesch & company
 CONSULTING ENGINEERS
 205 NORTH MICHIGAN AVENUE, CHICAGO, ILLINOIS 60601
 JOB NO. 3573

SN: 090-0156
 TAZEWELL CO., IL.
 STA. 10+529.222
 DATE: 12-23-04

2/3/2005
 m:\pco\15733\vr\compk2\shlab4-7a0900056.dgn