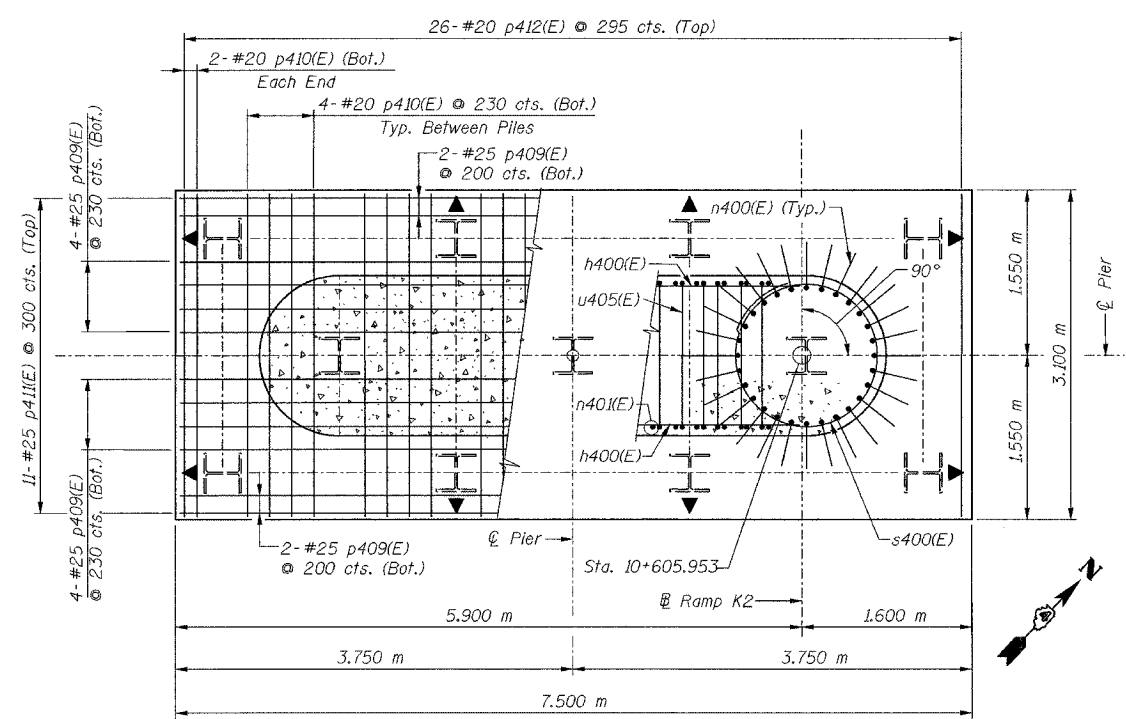
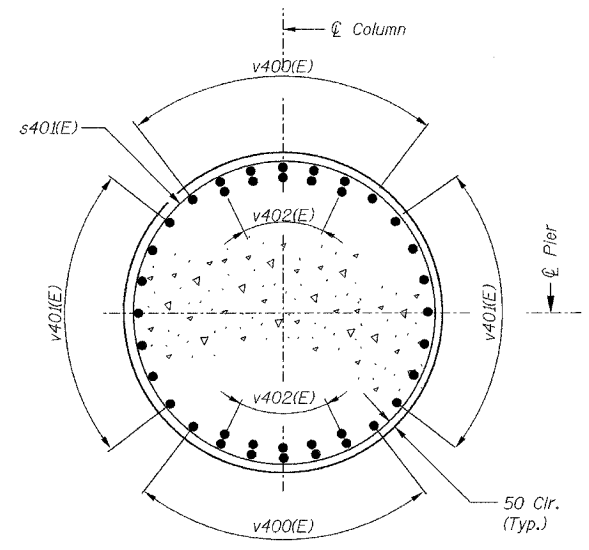


ROUTE No.	SECTION	COUNTY	TOTAL SHEETS	SHEET NO.
FAI 74	*	TAZEWELL	1366	589
STA.		TO STA.		
F.I.L.A. REGION		ILLINOIS PROJECT		

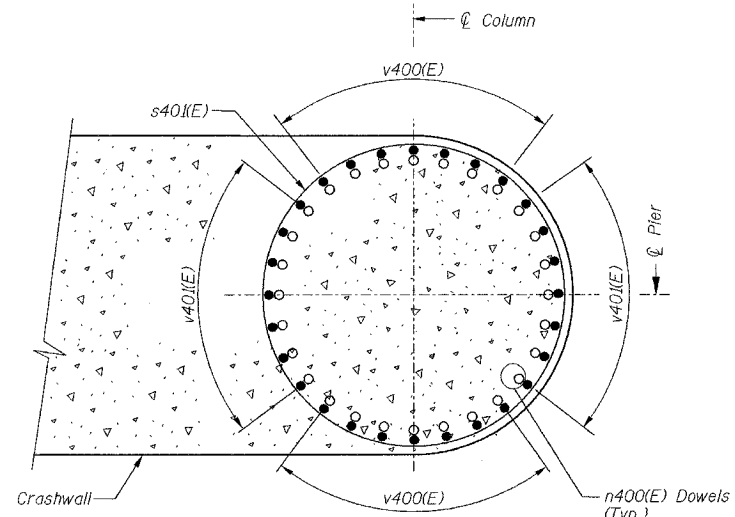


FOOTING PLAN

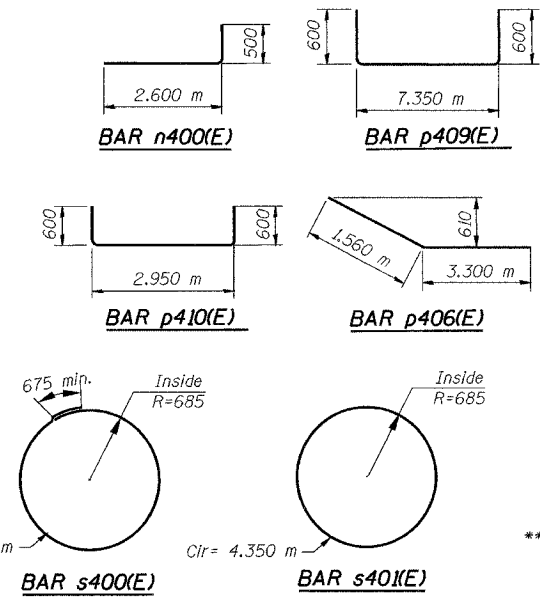
PIER 4 - PILE DATA
 Type : HP360x132
 Required Bearing : Driven to refusal
 Est. Length : 5.8 m
 No. Req'd. 10 + 1 Test Pile
 Design Capacity = 980kN/pile



SECTION D-D



SECTION E-E
 (Showing only col. reinforcement)



BAR u400(E), u401(E), u402(E), u403(E), u405(E) & u406(E)

Bar	a	b
u400(E)	560	800
u401(E)	560	915
u402(E)	560	1.100 m
u403(E)	870	1.320 m
u405(E)	1.400 m	1.460 m
u406(E)	900	610

BILL OF MATERIAL

Bar	No.	Size	Length (m)	Shape
n400(E)	16	# 20	4.40	U
n400(E)	56	# 30	3.10	U
n401(E)	42	# 15	1.60	U
p400(E)	12	# 30	8.80	U
p401(E)	6	# 15	4.35	U
p402(E)	6	# 15	8.80	U
p403(E)	2	# 15	8.38	U
p404(E)	2	# 15	7.13	U
p405(E)	6	# 30	5.80	U
p406(E)	8	# 15	4.86	U
p407(E)	4	# 15	0.96	U
p408(E)	4	# 15	0.72	U
p409(E)	12	# 25	8.55	U
p410(E)	28	# 20	4.15	U
p411(E)	11	# 25	7.40	U
p412(E)	30	# 20	2.95	U
p413(E)	4	# 15	7.40	U
p414(E)	6	# 15	1.98	U
s400(E)	4	# 15	5.03	W
s401(E)	2	# 15	4.40	W
u400(E)	8	# 20	2.16	U
u401(E)	16	# 20	2.39	U
u402(E)	100	# 20	2.76	U
u403(E)	9	# 20	3.51	U
u404(E)	8	# 20	3.53	U
u405(E)	21	# 15	4.32	U
u406(E)	16	# 15	2.12	U
v400(E)	28	# 30	4.61	U
v401(E)	28	# 30	5.57	U
v402(E)	20	# 30	3.89	U
Braced Excavation		CU M	6.3	
Concrete Structures		CU M	59.7	
Reinforcement Bars, Epoxy Coated		KG	7,460	
Furnishing Steel Piles HP360x132		M	59.0	
Driving Steel Piles HP360x132		M	59.0	
Test Pile Steel HP360x132		EACH	1	

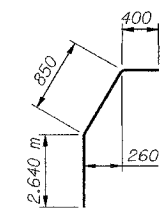
Reinforcement Bars designated (E) shall be epoxy coated.

***Length is height of spiral.

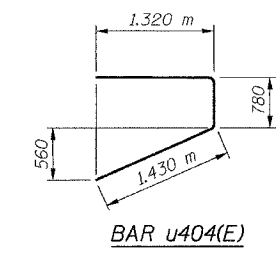
Cir. = circumference (using outside diameter).

DESIGNED	SWS
CHECKED	JWCIII
DRAWN	VH
CHECKED	LRB

- NOTES:**
1. Dimensions are out to out unless noted otherwise.
 2. Work this sheet with Sheet 43.
 3. ▲ Indicates direction of 1.7 (H) : 10 (V) Batter
 4. For Pile Layout, see Sheet 4.



BAR v402(E)



BAR u404(E)

alfred benesch & company
 CONSULTING ENGINEERS
 205 NORTH MICHIGAN AVENUE, CHICAGO, ILLINOIS 60601
 JOB NO. 3573

ILLINOIS DEPARTMENT OF TRANSPORTATION
 RAMP K-2 OVER
 MAIN ST & RAMP J-3
 F.A.I. ROUTE 74 (I-74)
 SECTION 90-IHB-5
PIER 4
FOOTING PLAN & DETAILS
 SN: 090-0156 STA. 10+529.222
 TAZEWELL CO., IL. DATE: 12-23-04

2/3/2005

m:\p\o\3573\work\pic2\ent\p\4a-Tab090106.dgn