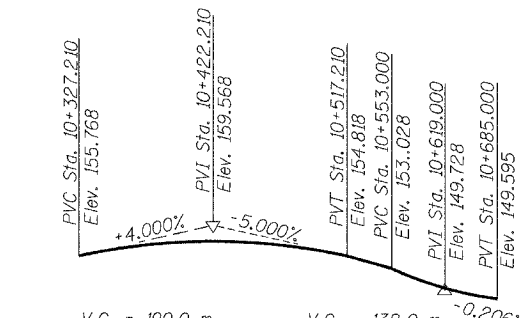
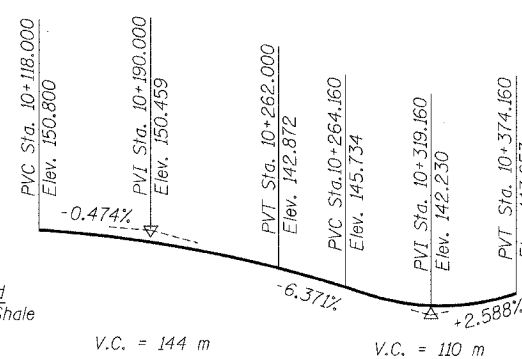
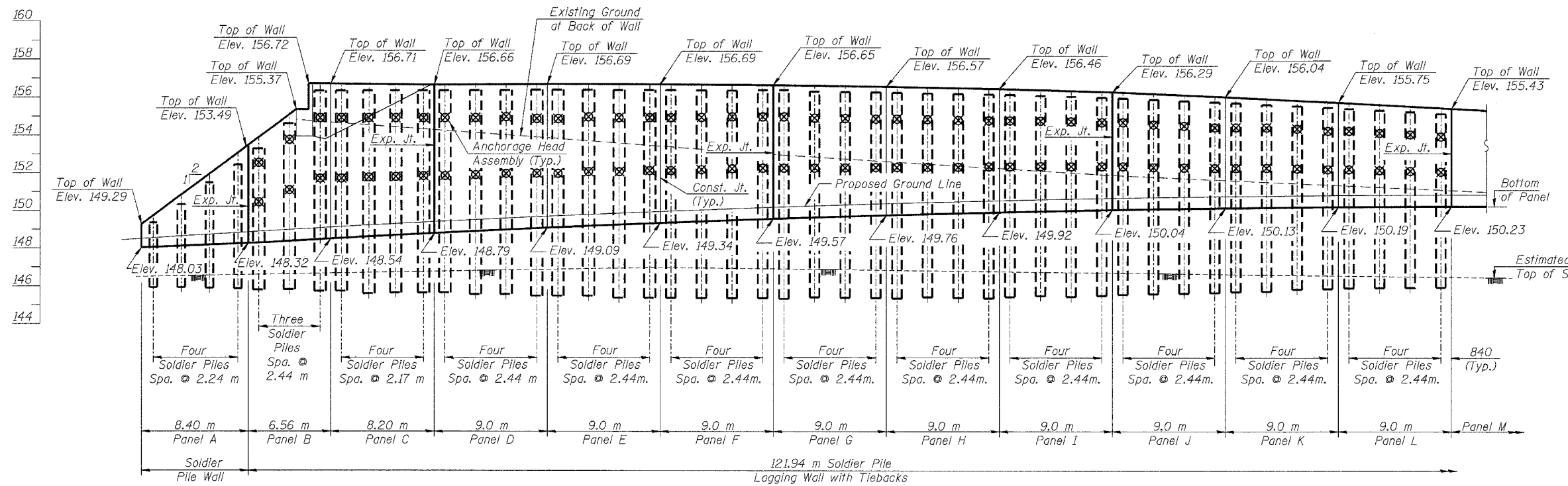
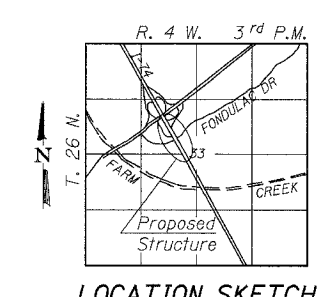
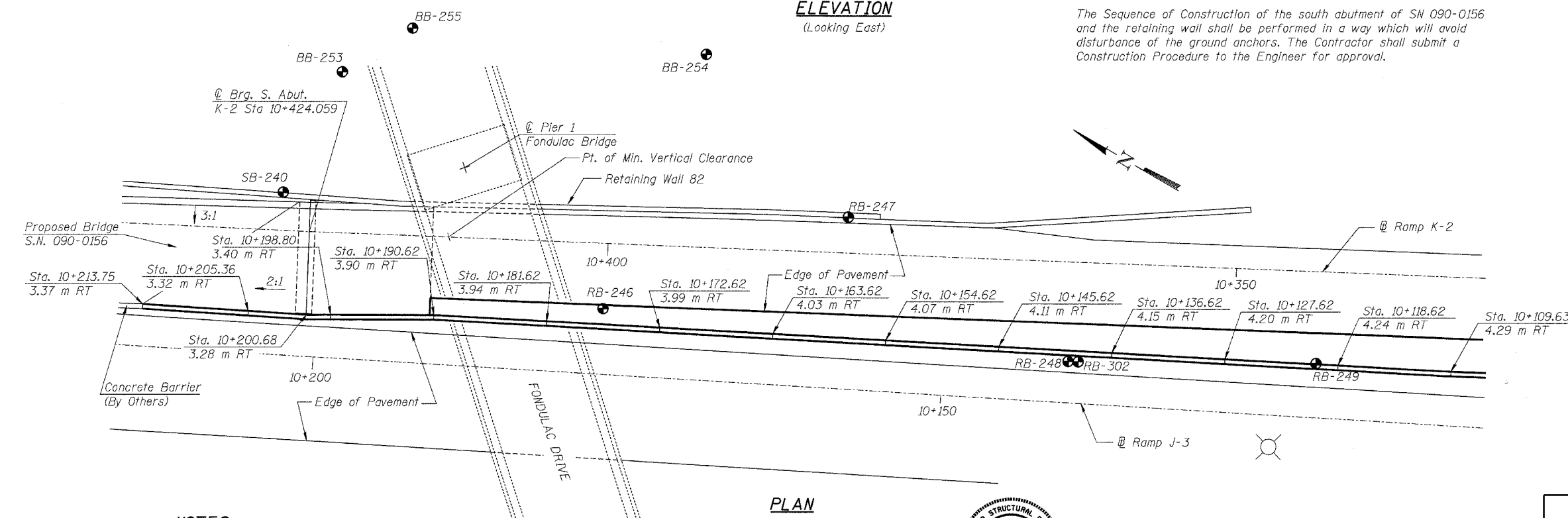


Bench Mark: Chisel '□' S.E. Corner Camp St., bridge parapet concrete wall state point TH 8905. Elev. 149.398

ROUTE NO.	SECTION	COUNTY	SHEET NO.	SHEET	SHEET NO. 1
FAI 74	*	TAZEWELL	1366	602	21 SHEETS
FED. ROAD DIST. NO. 7		ILLINOIS	FED. AID PROJECT		
*90-11HB-5					



The Sequence of Construction of the south abutment of SN 090-0156 and the retaining wall shall be performed in a way which will avoid disturbance of the ground anchors. The Contractor shall submit a Construction Procedure to the Engineer for approval.



NOTES

All dimensions are in millimeters (mm) except as noted.
All retaining wall stations/offsets are off J-3 Baseline.

DESIGN STRESSES

- $f'_c = 24 \text{ MPa}$ (Concrete)
- $f'_g = 27.5 \text{ MPa}$ (Grout)
- $f_y = 400 \text{ MPa}$ (Reinf.)
- $f_y = 345 \text{ MPa}$ (Soldier Piles) (M270 M Grade 345)
- $f'_s = 1860 \text{ MPa}$ (15mm ϕ Low Lax Strands)
- $f'_t = 1395 \text{ MPa}$ (15mm ϕ Low Lax Strands)

DESIGN SPECIFICATIONS

1996 AASHTO Specifications
with 1997, thru 2000 Interim



Michael T. Haley
Licensed Structural Engineer
State of Illinois No. 81-5991
Date: 12-20-04

LIN ENGINEERING, LTD.
20 W. Chestnut
Chatham, Illinois 62629
Phone: 618-488-1488 Fax: 618-488-0728
Designed By: MTH Checked By: KFG Drawn By: JMD
Date: 09/02 File: rd401-58090512.dgn

REVISIONS	
NO.	NAME

ILLINOIS DEPARTMENT OF TRANSPORTATION
GENERAL PLAN AND ELEVATION
RETAINING WALL 81
F.A.I. RTE. 74 (I-74)
SECTION 90-11HB-5
TAZEWELL COUNTY
RAMP J-3 STATION 10+037 TO 10+213
S.N. 090-8512