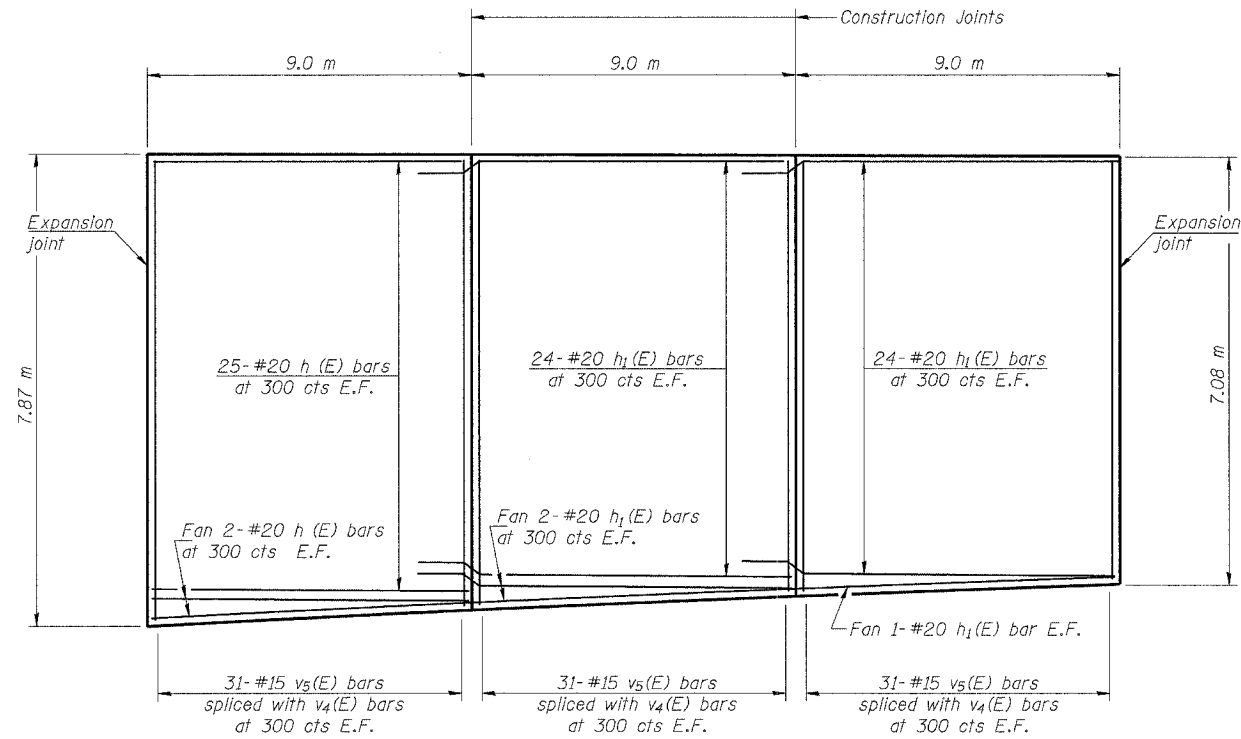
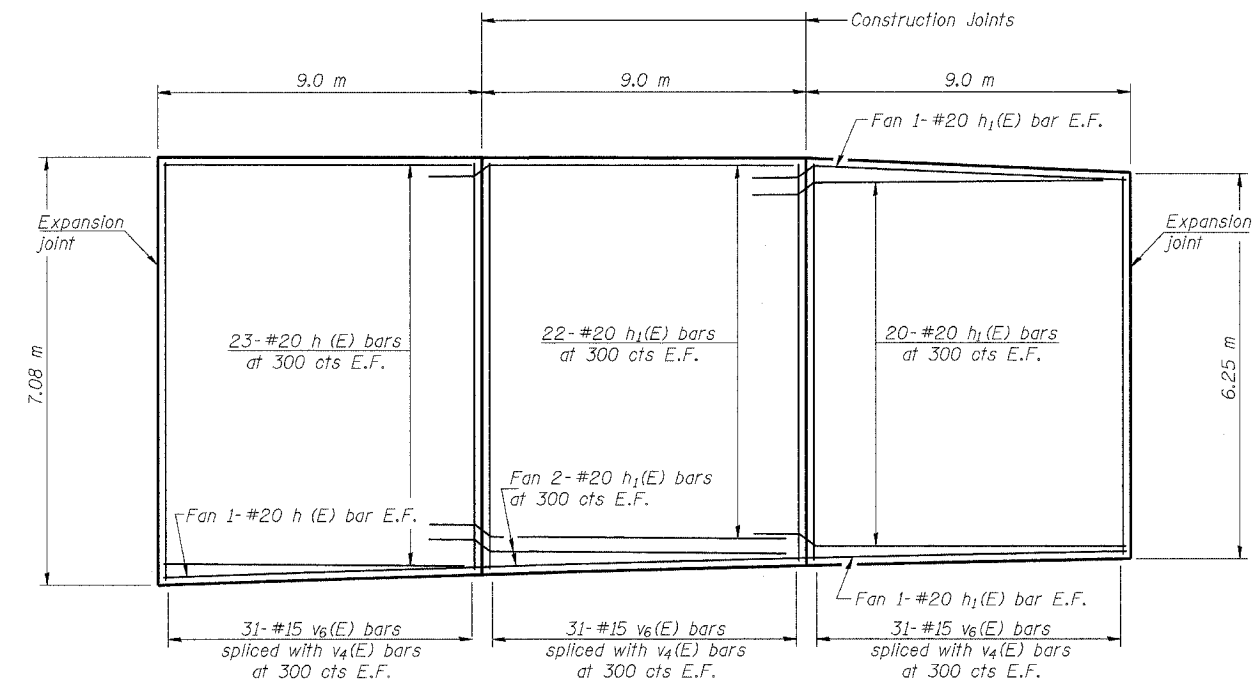


ROUTE NO.	SECTION	COUNTY	SHEET NO.	SHEET NO.
FAI 74	*	TAZEWELL	1366	689
FED. ROAD DIST. NO. 7		ILLINOIS	FED. AID PROJECT	
*90-11HB-5				

SHEET NO. 8
21 SHEETS



ELEVATION OF PANELS D TO F
(Looking From Front of Wall)

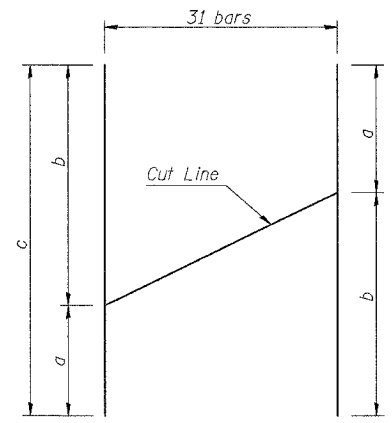


ELEVATION OF PANELS G TO I
(Looking From Front of Wall)

BILL OF MATERIAL

Bar	No.	Size	Length (m)	Shape
h(E)	102	#20	8.92	—
h ₁ (E)	194	#20	9.79	—
v ₄ (E)	372	#15	5.00	—
v ₅ (E)	93	#15	6.51	—
v ₆ (E)	93	#15	4.93	—
Concrete Structures		m ³	142.1	
Reinforcement Bars, Epoxy Coated		kg	11210	

Reinforcement Bars designated (E) shall be epoxy coated. Bars indicated thus 1 x 2- #20 etc. indicates 1 line of bars with 2 lengths per line. The horizontal bars shall be bent at the joints to account for the nonlinear wall alignment. Cost included in "Reinforcement Bars, Epoxy Coated."



BAR CUTTING DIAGRAM #15 BARS
(Length in meters)

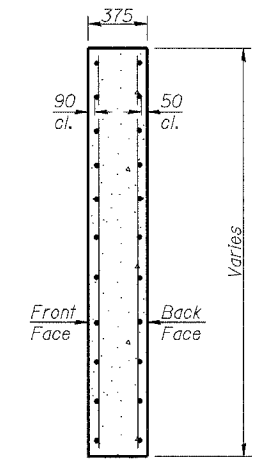
Bar	a	b	c
v ₅ (E)	3.39	3.12	6.51
v ₆ (E)	2.60	2.33	4.93

Note: Order bars full length. Cut bars as shown & use remainder on the other face of wall.

E.F. indicates each face.

MIN BAR LAP

#15 Bars= 640
#20 Bars= 790



SECTION THRU PANEL

REVISIONS	
NO.	NAME

LIN ENGINEERING, LTD.
20 N. Chestnut
Dixon, Illinois 62629
Tel: 815-454-4545
Fax: 815-454-4700
Designed By: MTH Checked By: KRG Drawn By: JMD
Date: 05/02 File: r90408-560908512.dgn

ILLINOIS DEPARTMENT OF TRANSPORTATION
**CONCRETE FACING
RETAINING WALL 81
F.A.I. RTE. 74 (I-74)
SECTION 90-11HB-5
TAZEWELL COUNTY
RAMP J-3 STATION 10+037 TO 10+213
S.N. 090-8512**