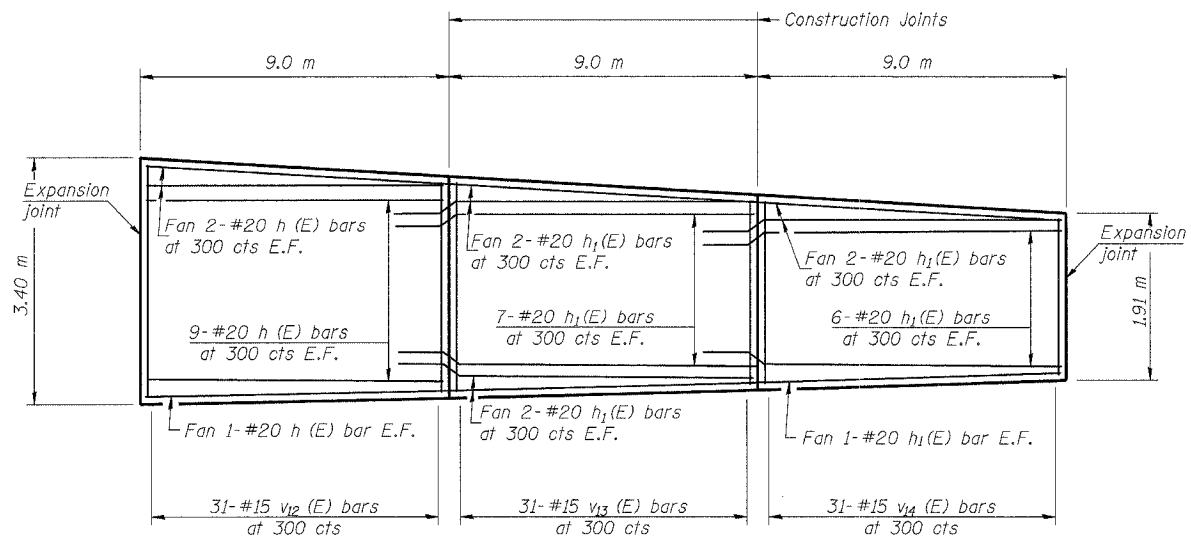
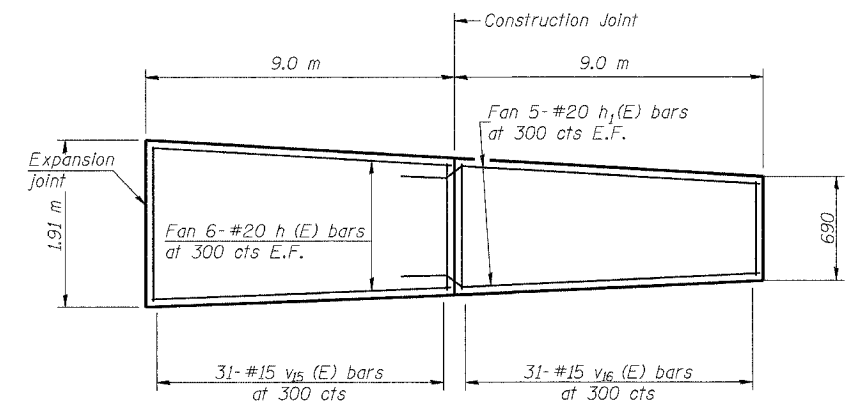


ROUTE NO.	SECTION	COUNTY	TOTAL SHEETS	SHEET NO.	SHEET NO. 10
FAI 74	*	TAZEWELL	1366	611	21 SHEETS
FED. ROAD DIST. NO. 7	LLINER	FED. RD. PROJECT	*90-11HB-5		



**ELEVATION OF PANELS P TO R**  
(Looking From Front of Wall)



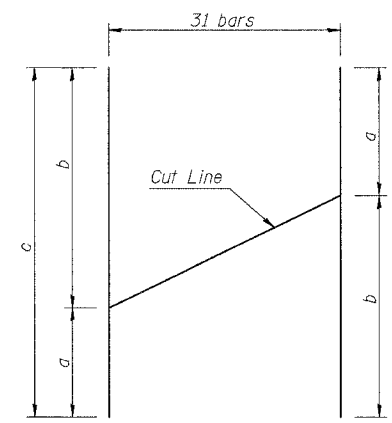
**ELEVATION OF PANELS S & T**  
(Looking From Front of Wall)

E.F. indicates each face.

**BILL OF MATERIAL**

Bar	No.	Size	Length (m)	Shape
h(E)	36	#20	8.92	—
h1(E)	50	#20	9.79	—
v12(E)	31	#15	6.12	—
v13(E)	31	#15	5.19	—
v14(E)	31	#15	4.14	—
v15(E)	31	#15	2.98	—
v16(E)	31	#15	1.76	—
Concrete Structures		m <sup>3</sup>	35.8	
Reinforcement Bars, Epoxy Coated		kg	2900	

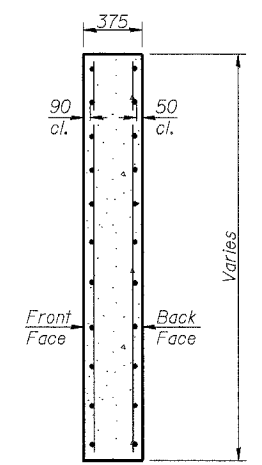
Reinforcement Bars designated (E) shall be epoxy coated. Bars indicated thus 1 x 2- #20 etc. Indicates 1 line of bars with 2 lengths per line. The horizontal bars shall be bent at the joints to account for the nonlinear wall alignment. Cost included in "Reinforcement Bars, Epoxy Coated."



**BAR CUTTING DIAGRAM v(E) BARS**  
(Length in meters)

Bar	a	b	c
v12(E)	3.28	2.84	6.12
v13(E)	2.84	2.35	5.19
v14(E)	2.35	1.79	4.14
v15(E)	1.79	1.19	2.98
v16(E)	1.19	0.57	1.76

Note: Order bars full length. Cut bars as shown & use remainder on the other face of wall.



**SECTION THRU PANEL**

**MIN BAR LAP**  
#15 Bars= 640  
#20 Bars= 790

**LIN ENGINEERING, LTD.**  
20 W. Chestnut  
Ottawa, Illinois 62429  
Tel: 618-483-4888 Fax: 618-483-4706  
Designed By: MTH Checked By: KRS Drawn By: JMO  
Date: 05/02 File: r20402-50002052.dgn

REVISIONS
NAME

ILLINOIS DEPARTMENT OF TRANSPORTATION  
**CONCRETE FACING**  
RETAINING WALL 81  
F.A.I. RTE. 74 (I-74)  
SECTION 90-11HB-5  
TAZEWELL COUNTY  
RAMP J-3 STATION 10+037 TO 10+213  
S.N. 090-8512