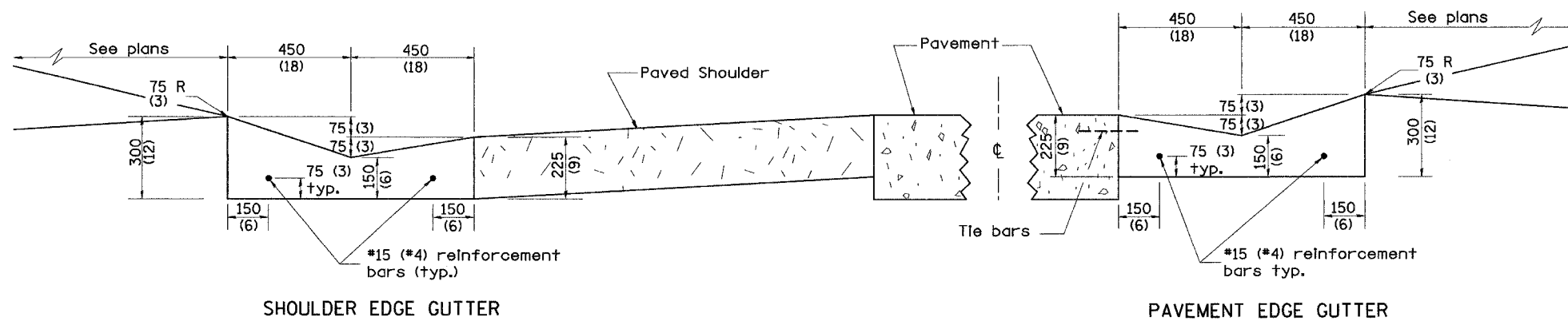
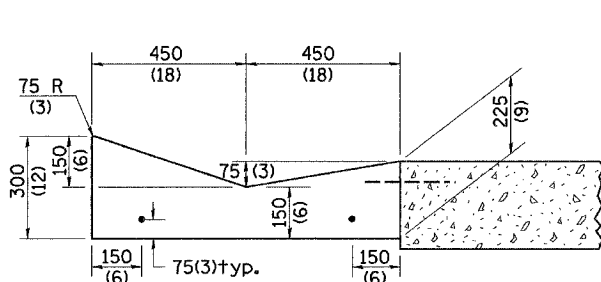


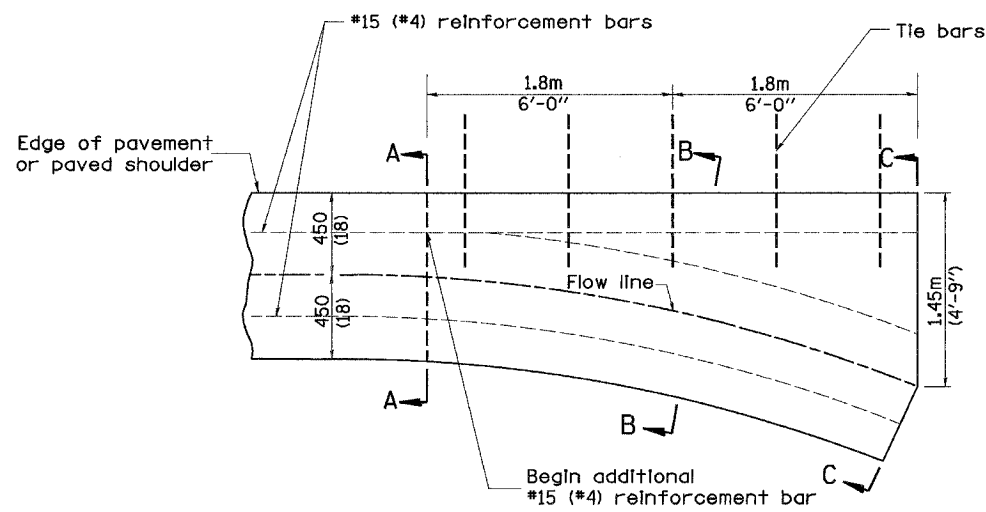
F.A. RTE.	SECTION	COUNTY	TOTAL SHEETS	SHEET NO.
			1366	655
STA.		TO STA.		
FED. ROAD DIST. NO.	ILLINOIS	FED. AID PROJECT		



TYPE A GUTTER (MODIFIED)



SECTION A-A

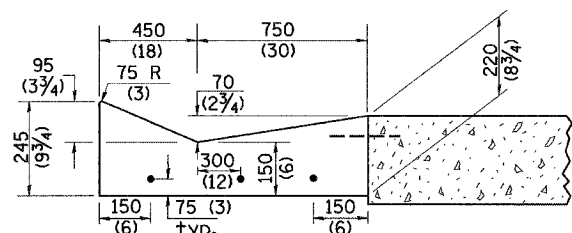


PLAN

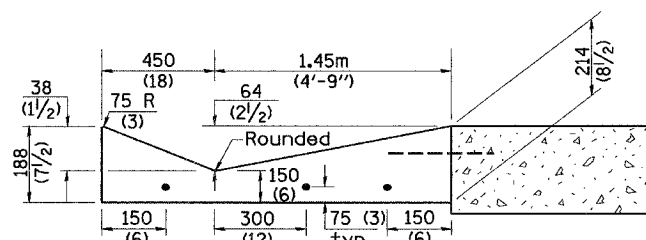
QUANTITY	
Section C-C to A-A	m ³ (cu. yd.) concrete.

GENERAL NOTES:

1. TYPE A GUTTER (MODIFIED) shall conform to the applicable portions of Section 606.
2. Tie bars shall be No. 20 (No. 6) at 600mm (24") centers unless otherwise shown.
3. Gutter, gutter inlets, gutter outlets, and gutter entrances shall be tied to rigid pavement in accordance with details shown on Standard 420001.
4. Joints shall be constructed in accordance with Article 606.06.
5. Welded wire fabric shall conform to Article 1006.10(c)(1), and shall not be less than 2.83 kg/m² (58 lbs/100 sq.ft.).



SECTION B-B



SECTION C-C

INLET

All dimensions are in millimeters (inches) unless otherwise noted.

ILLINOIS DEPARTMENT OF TRANSPORTATION
DISTRICT CADD STANDARD

TYPE A GUTTER, (MODIFIED)
(INLET, OUTLET & ENTRANCE)

CADD STANDARD 606101-D4 SHEET 1 OF 3

SCALE: NOT DRAWN TO SCALE DRAWN BY CADD
DATE **DATE** CHECKED BY

DATE	REVISIONS	BY
1-1-97	RENUM. A-1.02, NEW REVISION	T.P.
	BOX ELIMINATED EXPANSION	
	ANCHOR TIES	
2-28-02	ENTRANCE TYPICALS REVISED	M.A.

QUANTITIES	
CALC. BY:	DATE:
CHECKED BY:	DATE:
QUANTITY CALCULATIONS ARE ON FILE AT THE DISTRICT 4 OFFICE, BUREAU OF PROJECT IMPLEMENTATION, DOCUMENTATION SECTION	

DDN-ONLY

DESIGNER NOTE:
1. INCLUDE STATE STANDARD 420001.
2. INCLUDE DISTRICT SPECIAL PROVISION.

DATE