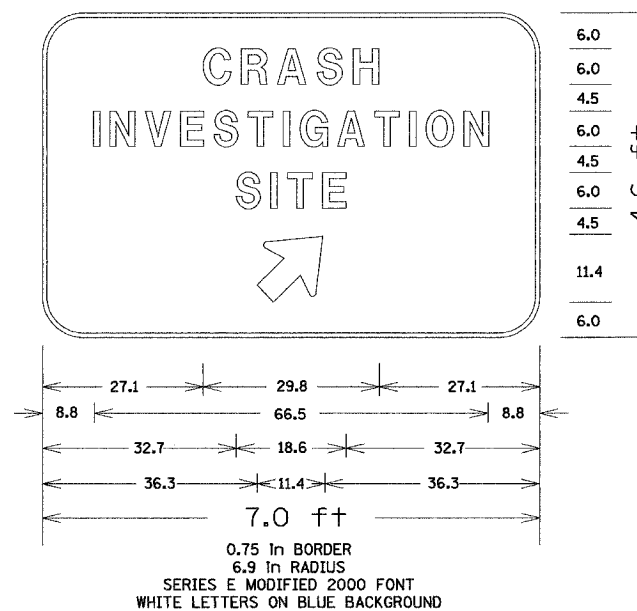


F.A. RTE.	SECTION	COUNTY	TOTAL SHEETS	SHEET NO.
			1366	688
STA.		TO STA.		
FED. ROAD DIST. NO.		ILLINOIS FED. AID PROJECT		

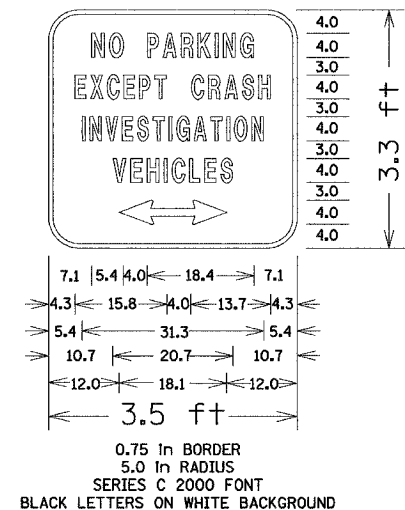
TYPE III SIGN (C)



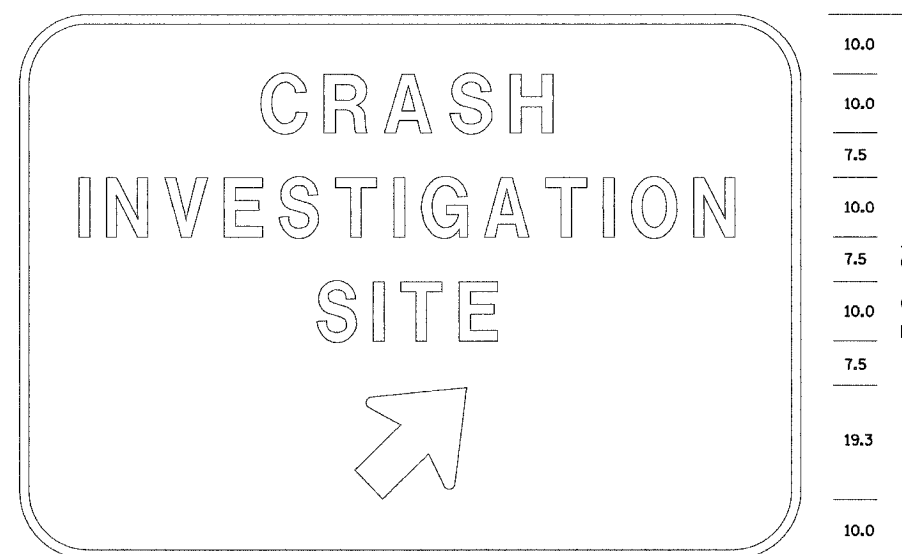
(B) TYPE III SIGN



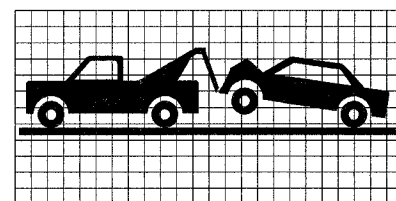
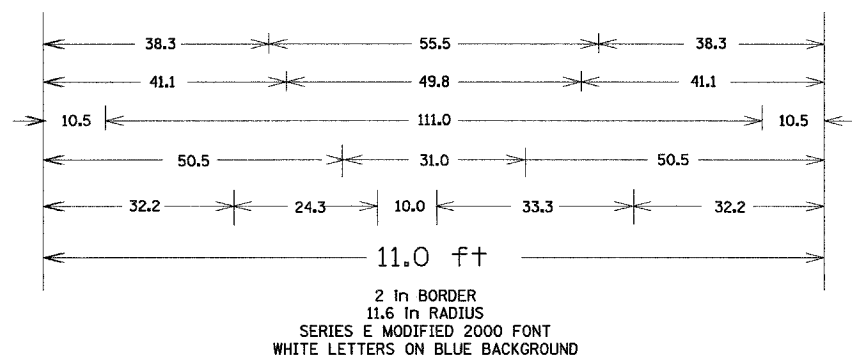
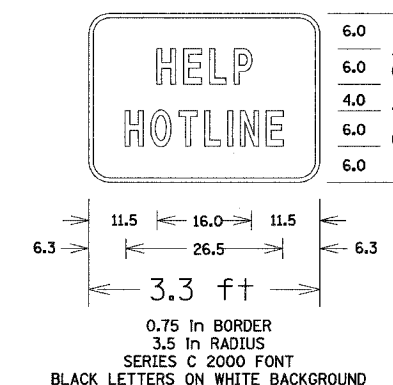
(A) TYPE II SIGN



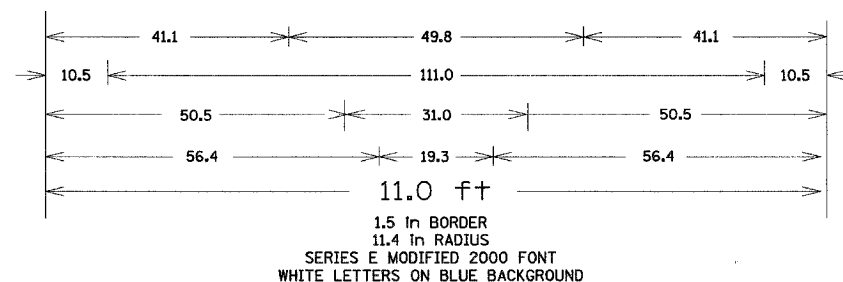
(E) TYPE III SIGN



(D) TYPE I SIGN



DETAIL "A"
(SIGN C)



NOTES:

- SIGN B SHOULD BE USED AT CIS LOCATIONS WHERE THE DESIGN SPEED ON THE RAMP AT THE CIS ENTRANCE TAPER IS LESS THAN 45 MPH (70 KPH). WHERE RAMP DESIGN SPEEDS ARE EQUAL TO OR GREATER THAN 45 MPH (70 KPH) AT THE CIS ENTRANCE TAPER, SIGN B SHOULD BE MODIFIED TO UTILIZE 8 IN (203 MM) TEXT.

REVISIONS		ILLINOIS DEPARTMENT OF TRANSPORTATION I-74 PROJECT STANDARD 701004-I74 TYPICAL CRASH INVESTIGATION SITE (CIS) - SIGNING DETAIL
NAME	DATE	
		DRAWN BY MJL CHECKED BY GFR DATE 02/12/03