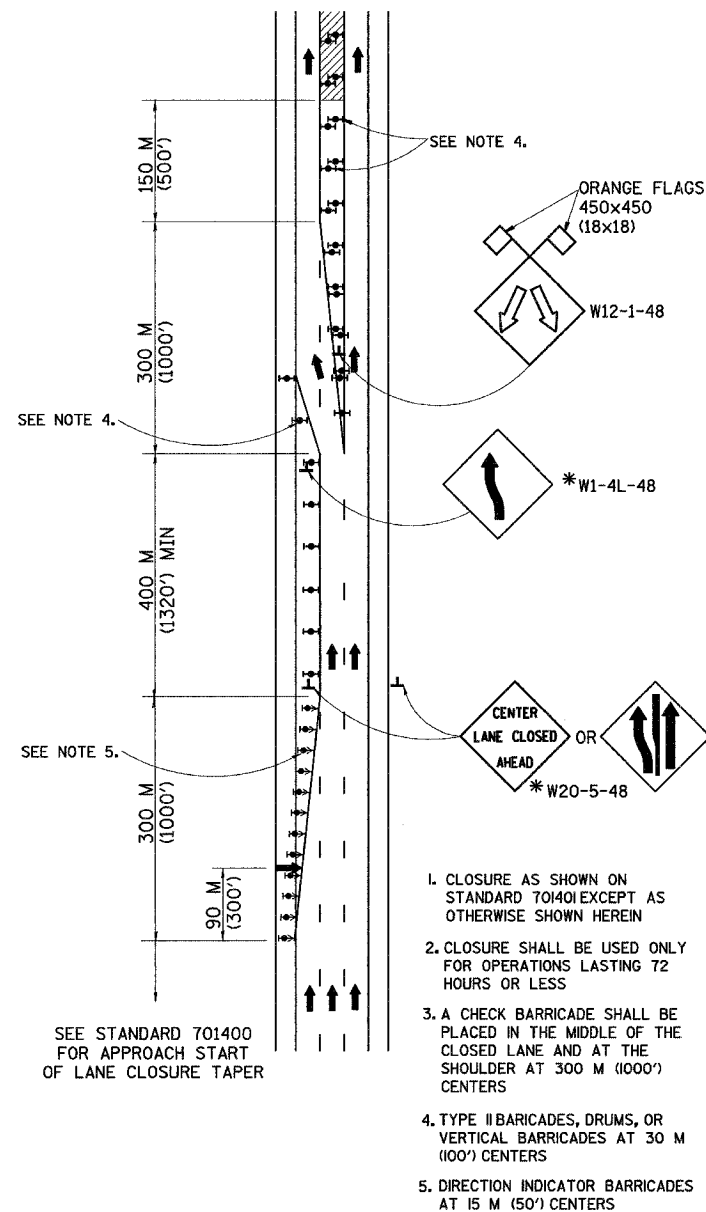


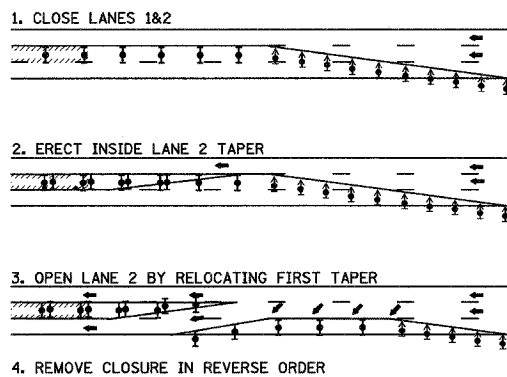
F.A. RTE.	SECTION	COUNTY	TOTAL SHEETS	SHEET NO.
			1366	680
STA.		TO STA.		
FED. ROAD DIST. NO.		ILLINOIS FED. AID PROJECT		

CENTER LANE CLOSURE

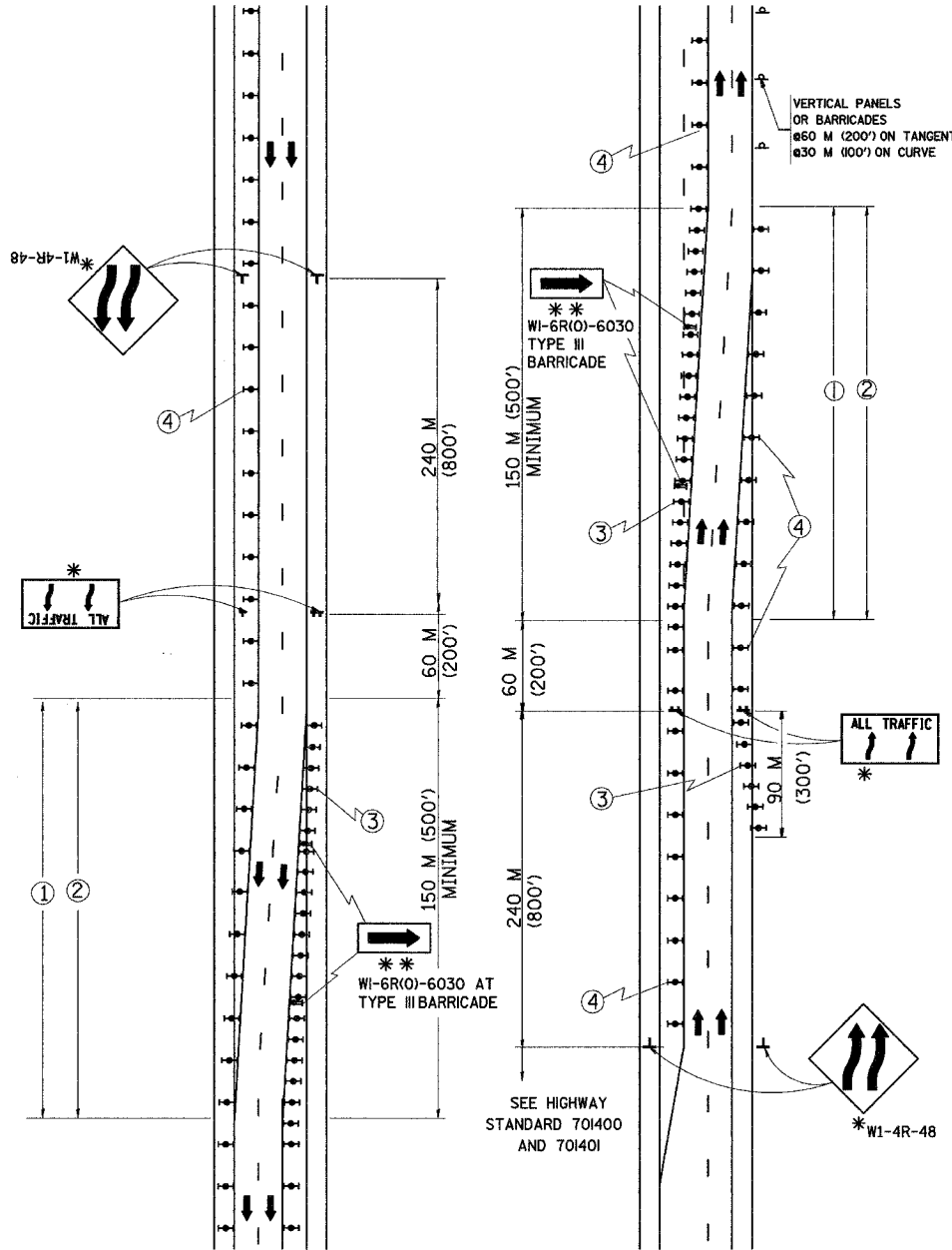


SEE STANDARD 701400 FOR APPROACH START OF LANE CLOSURE TAPER

INSTALLATION SEQUENCE



MULTI-LANE WEAVE



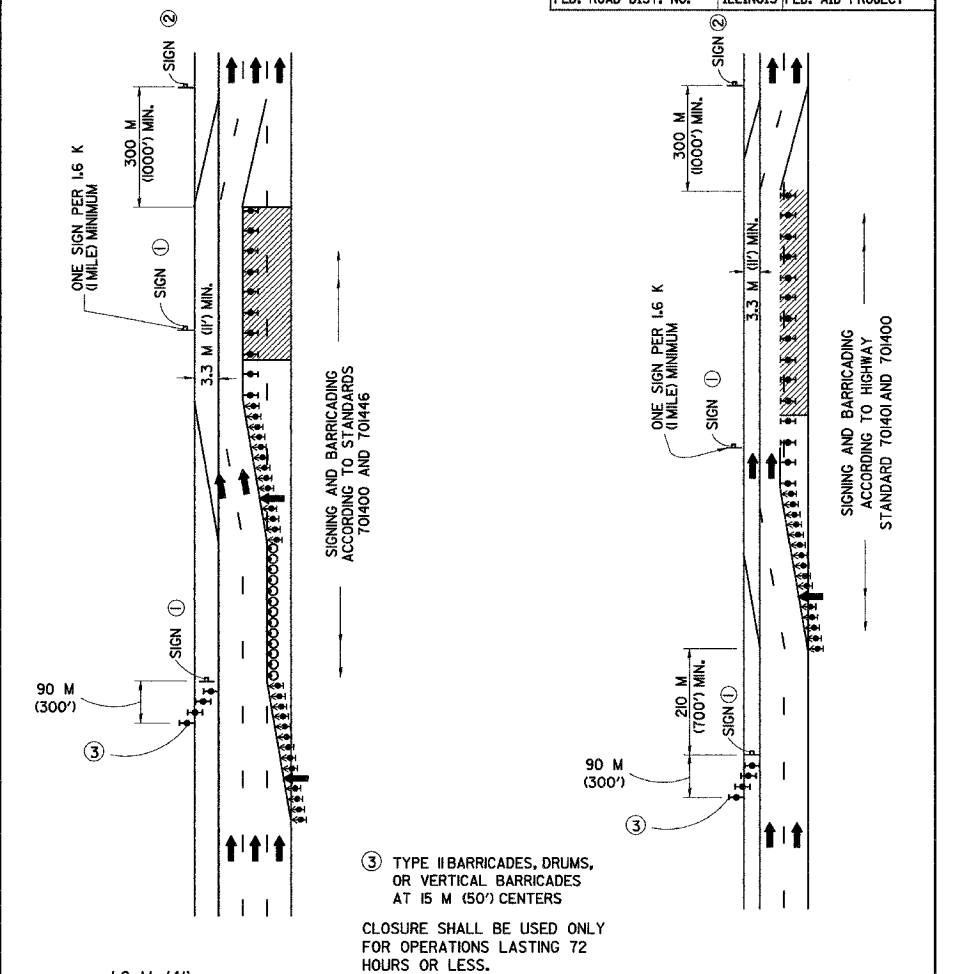
* THE NUMBER OF ARROWS ON THESE SIGNS SHALL MATCH THE NUMBER OF LANES OPEN TO TRAFFIC

** IF A TYPE III BARRICADE WITH AN ATTACHED SIGN PANEL WHICH MEET NCHRP 350 IS NOT AVAILABLE, THE SIGNS MAY BE MOUNTED ON NCHRP 350 TEMPORARY SIGN SUPPORTS DIRECTLY IN FRONT OF THE BARRICADE

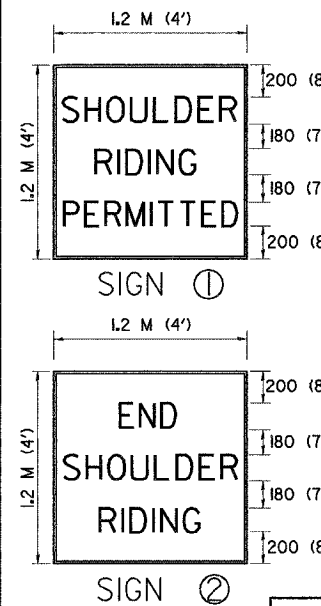
- TEMPORARY PAVEMENT MARKING TO BE INSTALLED: CONTINUOUS YELLOW LEFT EDGE LINE. LANE LINES 3 M-9 M (10'-30') SKIP-DASH, WHITE, CONTINUOUS WHITE RIGHT EDGE LINE.
- EXISTING PAVEMENT MARKING TO BE REMOVED.
- TYPE II BARRICADE, DRUM, OR VERTICAL BARRICADE WITH STEADY BURN MONODIRECTIONAL LIGHT AT 15 M (50') C-C SPACING.
- TYPE II BARRICADE, DRUM, OR VERTICAL BARRICADE WITH STEADY BURN MONODIRECTIONAL LIGHT AT 30 M (100') C-C SPACING.

ALL TRAFFIC 1.2 m x 2.4 m (4'x8'); 25 (I) BORDER; 250 (I) CAPITAL LETTERS BACKGROUND SHEETING SHALL BE THE SAME AS ALL DIAMOND SHAPED CONSTRUCTION SIGNS.

SHOULDER LANE



- TYPE II BARRICADES, DRUMS, OR VERTICAL BARRICADES AT 15 M (50') CENTERS
- CLOSURE SHALL BE USED ONLY FOR OPERATIONS LASTING 72 HOURS OR LESS.



150 (6) SERIES 'C' LEGEND BLACK LEGEND WHITE REFLECT. BACKGROUND 25 (I) BORDER

REVISIONS	
NAME	DATE
HS 04-2004	4/27/04
MULTI-LANE WEAVE TAPER LENGTH	10/21/04
DEL. PG. 701404-74 AND PG. 701446	10/22/04

SYMBOLS

- ARROW BOARD
- WORK AREA
- SIGN WITH 450x450 (18x18) ORANGE FLAG ATTACHED *
- SIGN ON PORTABLE OR PERMANENT SUPPORT *
- TYPE II BARRICADE, DRUM, OR VERTICAL BARRICADE WITH STEADY BURN MONODIRECTIONAL LIGHT
- DRUM WITH STEADY BURN MONODIRECTIONAL LIGHT
- DIRECTION INDICATOR BARRICADE WITH STEADY BURN MONODIRECTIONAL LIGHT

* ALL SIGNS SHALL BE MOUNTED AT A MINIMUM HEIGHT OF 1.5 m (5').

GENERAL NOTE

WORK ZONE SPEED LIMIT SIGNS AND FLAGGER SIGNS SHALL BE AS SHOWN ON STANDARD 701401

ALL DIMENSIONS ARE IN MILLIMETERS (INCHES) UNLESS OTHERWISE SHOWN

ILLINOIS DEPARTMENT OF TRANSPORTATION
I-74 PROJECT STANDARD 701403-174
TRAFFIC CONTROL DETAILS FOR FREEWAY
CENTER LANE CLOSURE
MULTI-LANE WEAVE
SHOULDER LANE

DRAWN BY
DATE 7/18/02
CHECKED BY