

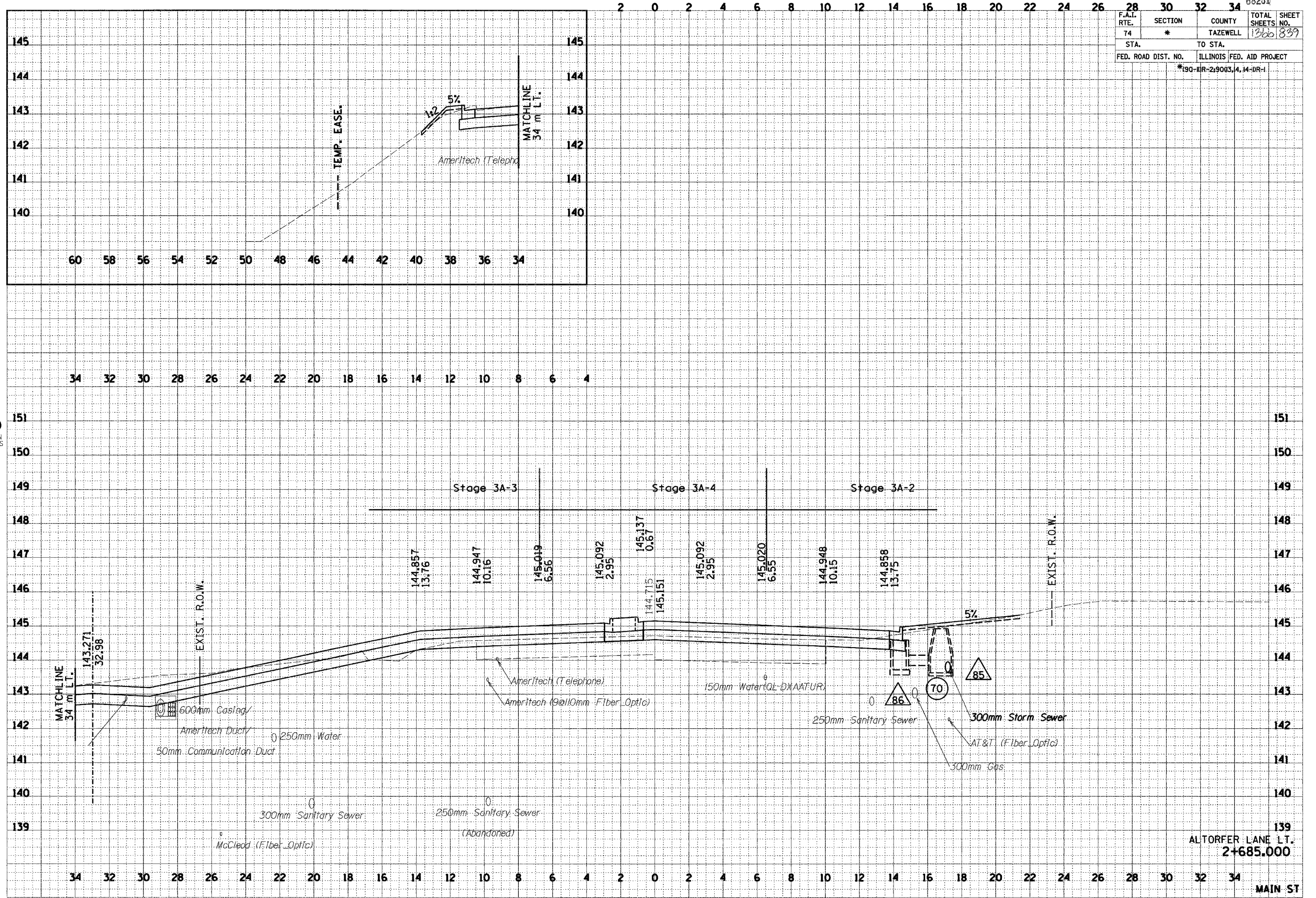
D:\pbase\p1\1101-Sana.dgn 12/15/2004 3:54:22 PM

F.A.I. SECTION		COUNTY	TOTAL SHEETS	SHEET NO.
74 *		TAZEWELL	1366	839
STA. TO STA.		ILLINOIS FED. AID PROJECT		
		*190-DR-29003,4,14-DR-1		

FINAL SURVEY	DATE
SURVEYED	
NOTE BOOK	
AREAS CHECKED	

ORIGINAL SURVEY	DATE
SURVEYED	
NOTE BOOK	
AREAS CHECKED	

URS
URS CORPORATION
DECATUR, ILLINOIS



ALTORFER LANE LT.
2+685.000

MAIN ST