

\\nas02\proj\151101-5amr.dgn 12/16/2014 3:55:39 PM

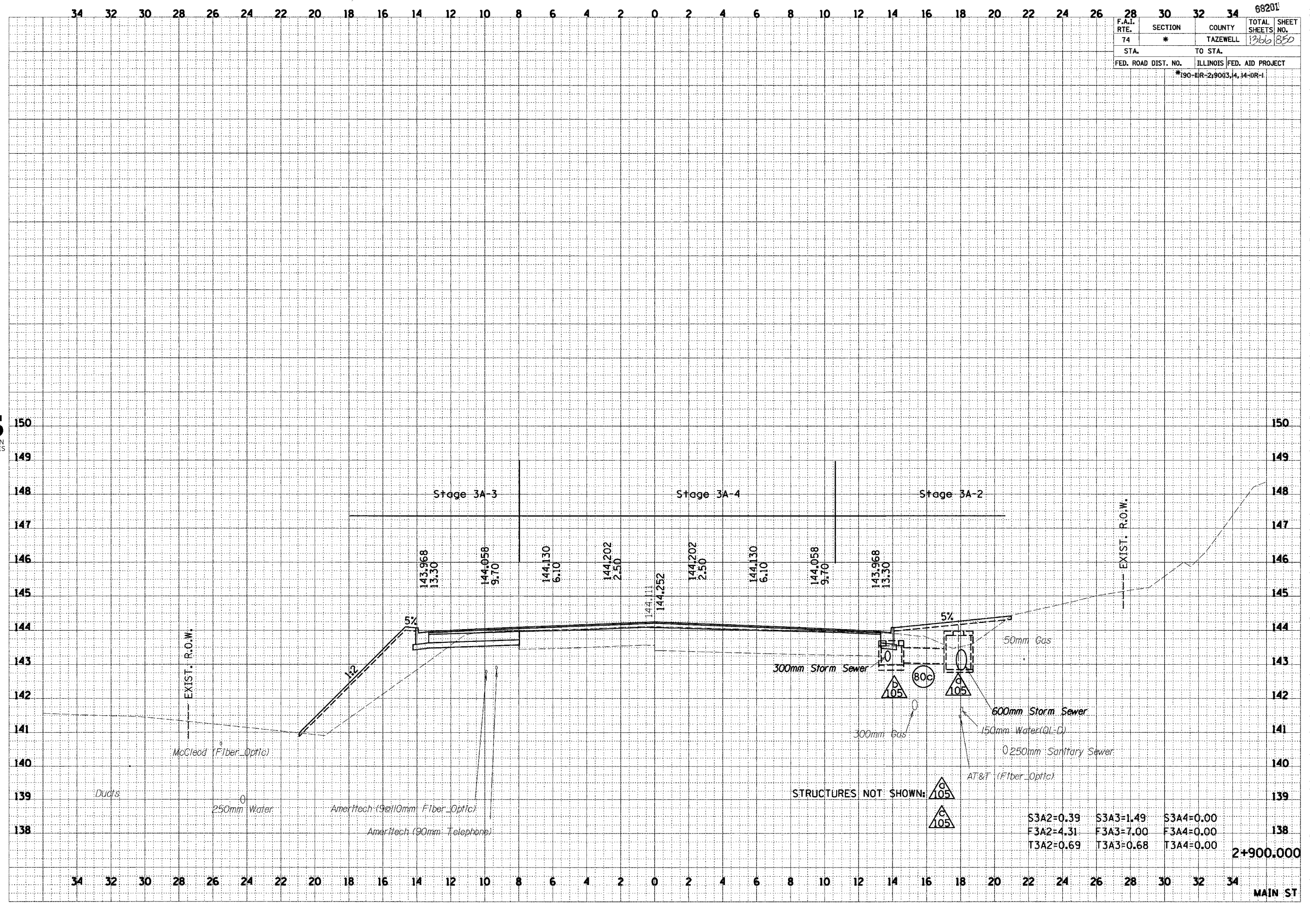
68201

F.A.I. RTE.	SECTION	COUNTY	TOTAL SHEETS	SHEET NO.
74	*	TAZEWELL	1366	850
STA.		TO STA.		
FED. ROAD DIST. NO.		ILLINOIS FED. AID PROJECT		
*190-11R-2:9013,4,14-DR-1				

FINAL SURVEY	DATE
SURVEYED	
PLOTTED	
NOTE BOOK	
AREAS	
AREAS CHECKED	

ORIGINAL SURVEY	DATE
SURVEYED	
PLOTTED	
NOTE BOOK	
AREAS	
AREAS CHECKED	

URS
 URS CORPORATION
 DECATUR, ILLINOIS



2+900.000

MAIN ST