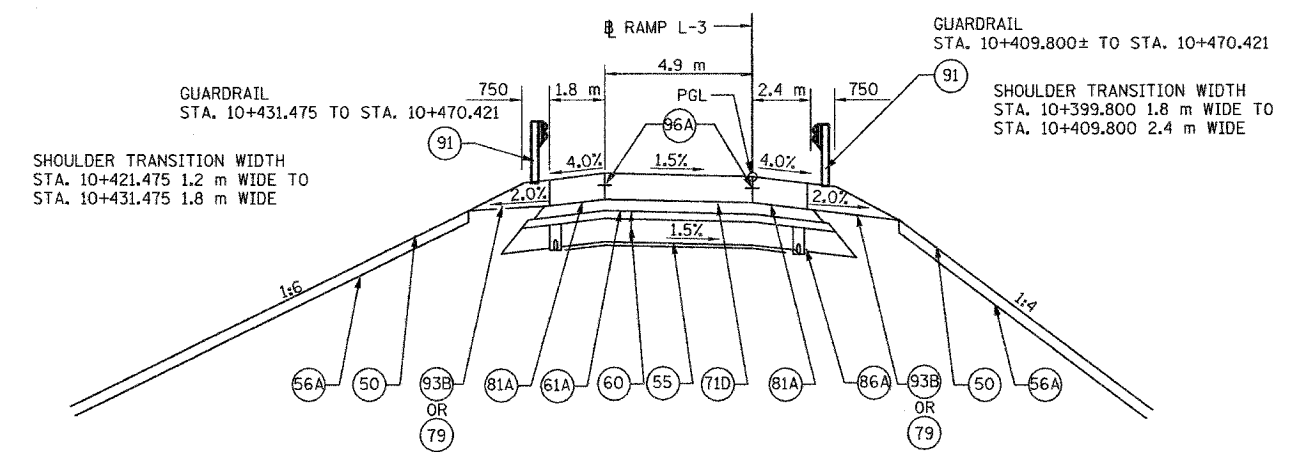


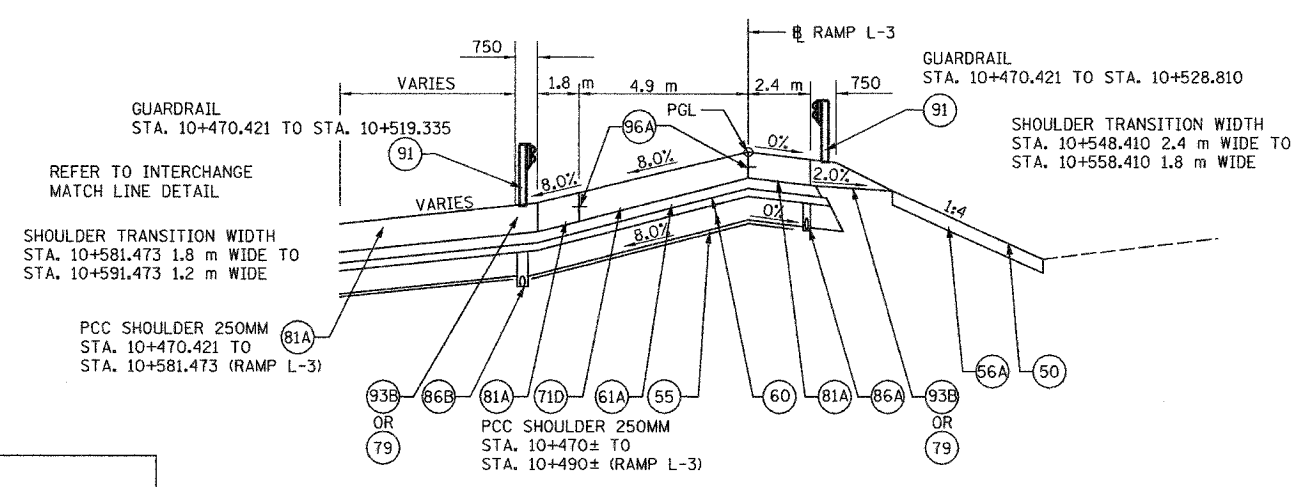
F.A.I. RTE.	SECTION	COUNTY	TOTAL SHEETS	SHEET NO.
74	*	TAZEWELL	1366	914
STA. 10+390.332 TO STA. 10+548.410		ILLINOIS FED. AID PROJECT		

• (90-11R-2)90(13,14,14-1R-1



F.A.I. ROUTE 74 RAMP L-3
TYPICAL 2
STA. 10+390.332 TO STA. 10+470.421

- LEGEND**
- (50) PROPOSED GROUND LINE
 - (55) PR GEOTECHNICAL FABRIC FOR GROUND STABILIZATION
 - (56A) PR FURNISH AND PLACE TOP SOIL 100MM
 - (60) PR AGGREGATE SUBBASE, 300MM
 - (61A) PR BITUMINOUS CONCRETE BINDER COURSE, SUPERPAVE, IL-19.0L (LOW ESAL), 100MM
 - (71D) PR PORTLAND CEMENT CONCRETE PAVEMENT 250MM (JOINTED)
 - (79) PR AGGREGATE SHOULDERS, TYPE B
 - (81A) PR PORTLAND CEMENT CONCRETE SHOULDERS 250MM
 - (84) PR PIPE CULVERT
 - (86A) PR PIPE UNDERDRAINS 100MM
 - (86B) PR PIPE UNDERDRAINS 150MM
 - (91) PR STEEL PLATE BEAM GUARDRAIL
 - (93B) PR GUARDRAIL AGGREGATE EROSION CONTROL
 - (96A) PR LONGITUDINAL CONSTRUCTION JOINT

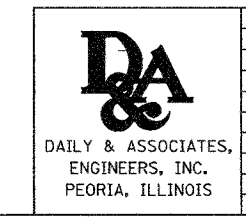


F.A.I. ROUTE 74 RAMP L-3
TYPICAL 3
STA. 10+470.421 TO STA. 10+548.410
FULL SUPER SHOWN
STA. 10+497.000 TO STA. 10+524.000

REFER TO SCHEMATIC DRAWING
STA. 153+892.180 TO STA. 154+500
FOR SUPERELEVATION INFORMATION

STRUCTURAL DESIGN TRAFFIC:	YEAR 2025
PV = 90 %	SU = 5 % MU = 5 %
ROAD/STREET CLASSIFICATION:	CLASS 1
PERCENT OF STRUCTURAL DESIGN TRAFFIC IN DESIGN LANE:	
P = 50 %	S = 50 % M = 50 %
TRAFFIC FACTOR: ACTUAL TF = 9.23	MIN TF = 8.37
AC GRADE: BINDER =	SURFACE =
IBR:	
SSR: POOR	

01/07/2005 05:46:07 PM
g:\dch\5589-74\dwg\cont\11\103-50.dwg



REVISIONS	
NAME	DATE

ALL STATIONS INDICATED ARE WESTBOUND STATIONING UNLESS OTHERWISE NOTED.

ILLINOIS DEPARTMENT OF TRANSPORTATION
F.A.I. ROUTE 74 (I-74)
PROPOSED TYPICAL SECTIONS
RAMP L-3
STA. 10+390.332 TO STA. 10+548.410

DATE 01/07/2005
DRAWN BY
CHECKED BY

CONTRACT 11: PLAN SET 2 OF 4 FINAL PLANS 01/05